

1/ TYPE SM87PB

2/ CERTIFICATION NO. BASEEFA Ex85B1037 EExdIICT6  
Ex84B2086 EExibIICT4

3/ WEIGHT  $3.8 \pm 0.2$  kg

4/ MATERIAL STAINLESS STEEL GRADE 316/ANC 4B TO BS 3146:1975

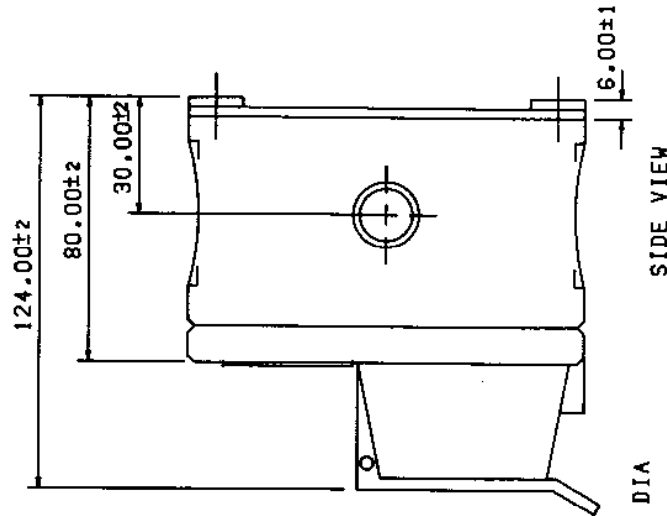
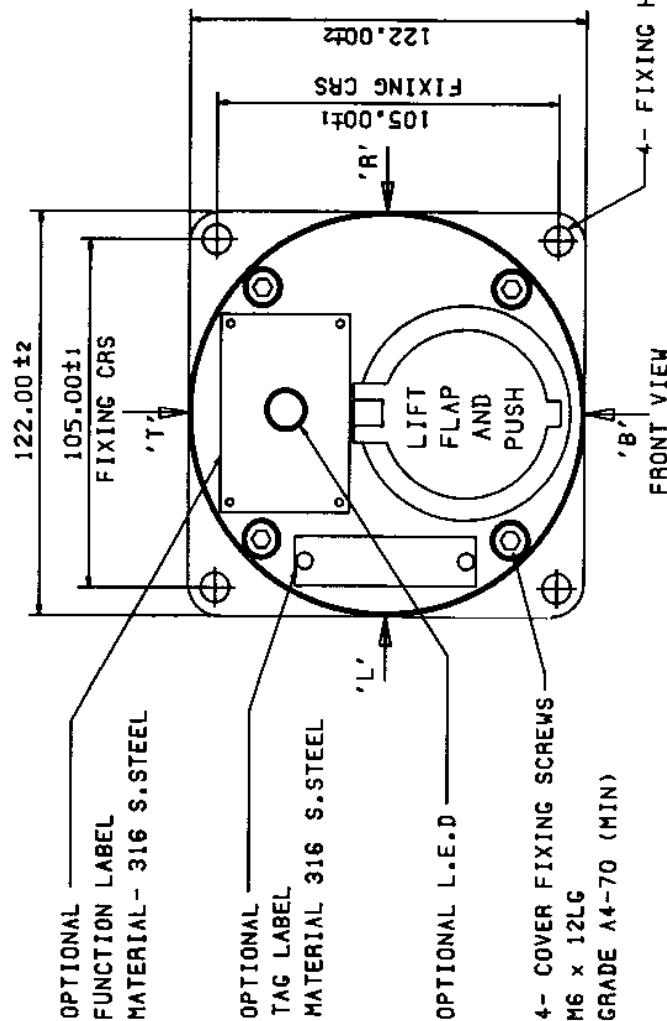
5/ FUNCTION LABEL LETTER SIZE 5mm MAX

6/ TERMINALS SUITABLE FOR UP TO 2.5mm SQ CABLE

7/ CABLE ENTRIES AVAILABLE AT "T" "B" "L" "R"

8/ HYLOMAR PL32 SEALANT APPLIED TO ALL CERTIFIED  
BLANKING PLUGS

9/ RESET KEY PROVIDED FOR LATCHING VERSION/BATCH



DO NOT SCALE



MEDC, Colliery Road, Pinxton,  
Nottingham NG16 6JF, U.K.  
Tel. Ripley (0773) 812249  
Fax: (0773) 580282

ISSUES  
C1-12-92 CF  
REPLOTTED

WELDING TERMS & SYMBOLS  
TO BS 499 PART 2  
CARBON STEEL TO BE WELDED  
IN ACCORDANCE WITH BS 5135  
STAINLESS STEEL TO BE WELDED  
IN ACCORDANCE WITH BS 3019  
PT 2 - 1980  
WELDS TO BE FREE FROM  
SLAG & SPLATTER

MACHINE SYMBOLS  
THUS  $\nabla$   $\mu$ m  
REMOVE ALL BURRS  
AND SHARP EDGES  
TOLERANCES  
GEN. MC OR CRS  
 $\pm 0.5$   $\pm 0.3$

THIS DRAWING IS  
CONFIDENTIAL AND IS  
THE PROPERTY OF  
MEDC AND MUST NOT  
BE REPRODUCED  
EITHER WHOLLY OR  
PARTLY, ALL RIGHTS  
IN RESPECT OF  
PATENTS, DESIGNS  
AND COPYRIGHT ARE  
RESERVED.

DRN. CF 20192  
CH'D SM - W  
AP'D SM - W  
SCALE 1  
METRIC DIMENSIONS  
ONLY (U.O.S.)

TITLE  
SM87 PB  
GENERAL ARRANGEMENT.  
A4  
SIZE  
S/043-01-03  
DRG NO  
ISSUE C.