

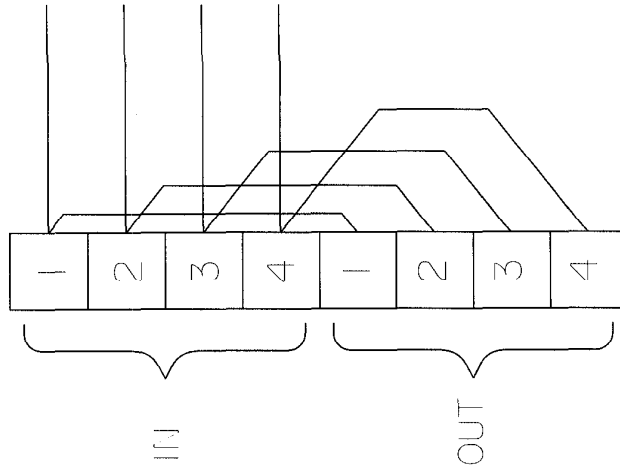
- ISSUES



OF ELECTRICAL & ELECTRONIC
EQUIPMENT & SYSTEMS FOR
HAZARDOUS AREAS

<div>ISSUES</div>	<div>ALL OTHERS TO USE IN ANY MANNER WITHOUT THE WRITTEN PERMISSION OF THE PUBLISHER ARE PROHIBITED.</div>	DRAWN BY:	DATE:	TITLE	
		P.FISHWICK	25/06/03	DB16 U/L CUSTOMER: GA	
		CHECKED BY:	DATE:		
		M.SLACK	28-06-04		
		APPROVED BY:	DATE:		
REMOVE ALL BUREAU AND CHAIR CORNERS	P.OATES	28-06-04			
MACHINE STAMPED THIS	SCALE	1:4	SIZE:	DRG No.	ISSUE
			A 4	286-118	A

100V LINE VERSION



**CURRENT
PRODUCTION COPY**

CELL BOOK

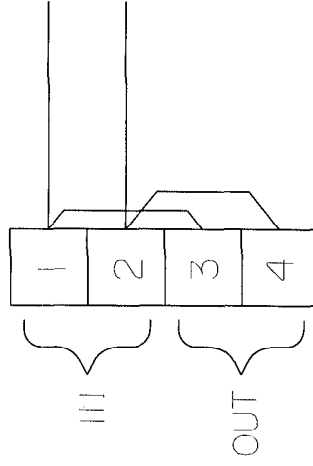
I

TERMINALS	POWER
1:2	30W
2:3	25W
3:4	12W
1:3	6W
2:4	4W
1:4	2W

DO NOT SCALE



80hm VERSION



TERMINAL	DRIVER TERMINAL
1 + 3	+VE
2 + 4	-VE



OF ELECTRICAL & ELECTRONIC
EQUIPMENT & SYSTEMS FOR
HAZARDOUS AREAS

ALL OTHERS WILL BE RESPONSIBLE FOR ANY CHANGES TO THE DRAWING AFTER THE DATE OF THE DRAWING IS MADE.	DRAWN BY: P. FISHWICK	DATE: 14/01/03	DB16 100V / 80HM WIRING DIAGRAM	TITLE
	CHECKED BY: M. SLACK	DATE: 14/01/03		
	APPROVED BY: P. FISHWICK	DATE: 14/01/03		
	SCALE: N.T.S	SIZE: A 4		
	DRG No. 286-113	ISSUE A		