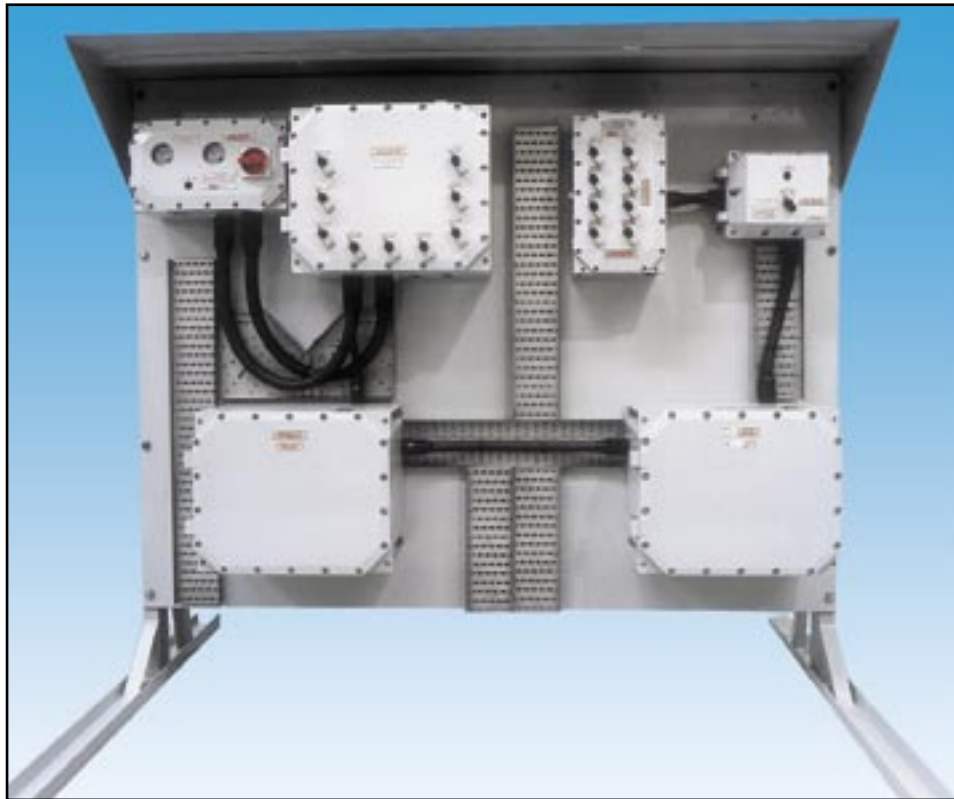


DISTRIBUTION PANELS AND BOARDS

EExd Weatherproof



Custom-built Distribution and Control Panel

Introduction

This range of custom built hazardous area distribution systems is BASEEFA certified and designed for use in flammable atmospheres and harsh environmental conditions.

Distribution Panel/Board Applications

Lighting Distribution.

Trace Heating.

General Distribution.

M.O.V.'s.

Welding Outlet.

Motor Control and General Distribution.

FPSO Turret Lighting and Distribution.

- ★ Zones 1 & 2.
- ★ EExd IIB.
- ★ ATEX approved.
- ★ BASEEFA certified.
- ★ IP65 & IP66*.
- ★ Cast Iron enclosures.
- ★ Multi-pole MCB's.
- ★ Isolators.
- ★ Fuse switches.
- ★ Incoming MCCB or ELMCCB.
- ★ Outgoing MCB or ELMCB's.
- ★ Current rating 315 amp.
- ★ Motor starters.
- ★ Status and warning lamps.
- ★ Meters.
- ★ Fuses.
- ★ Transformers up to 8KVA.
- ★ Selector switches & pushbuttons.
- ★ Hinge cover.
- ★ Wall or frame mounted.

*Model dependant.

MEDC Ltd, Colliery Road,
Pinxton, Nottingham NG16 6JF, UK.
Tel: +44 (0)1773 864100
Fax: +44 (0)1773 582800

MEDC International, 5829 West Sam Houston Parkway,
North, Suite 1005, Houston, Texas 77041, USA.
Tel: +1 (713) 937 9772
Fax: +1 (713) 937 9773

MEDC Norway, Auglaendsmyraa 6,
4016, Stavanger, Norge.
Tel: +47 913 92 289
Fax: +47 914 46 030

Sales Enq. Fax: +44 (0)1773 582830 Sales Orders Fax: +44 (0)1773 582832
E-Mail: sales@medc.com Web: www.medc.com



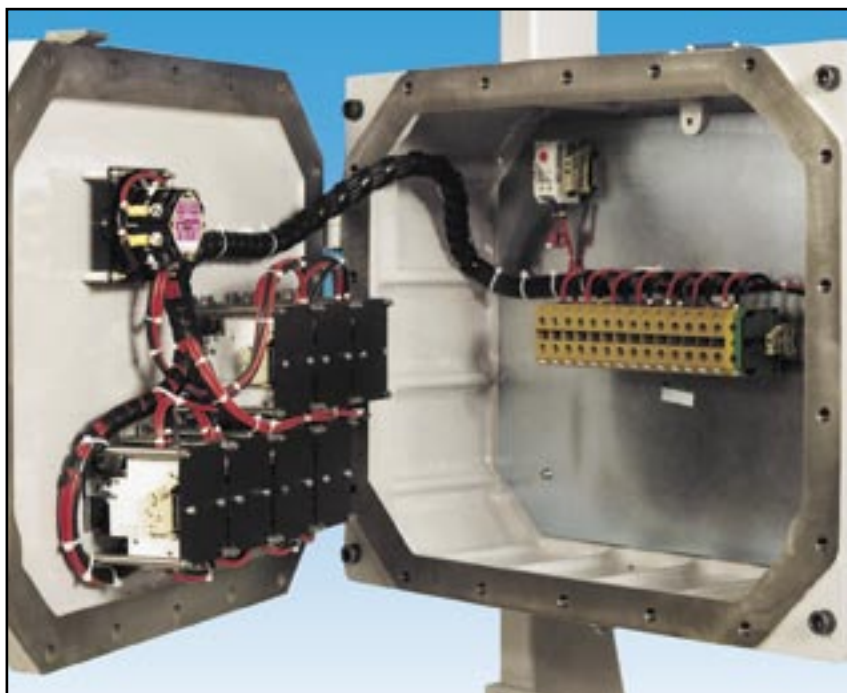
Multiway MCB/ELMCB Distribution Panel

Application

Custom built to suit clients' requirements available, with or without incoming isolator unit.

Features

- ★ Hinged cover on all enclosures.
- ★ Option of door interlock when incoming isolator fitted.
- ★ All external handles are padlockable in "Off" position.
- ★ 4 enclosure options available, which will offer a maximum of 20 TP or 20 DP ELMCB units mounted inside one enclosure.
- ★ Fuse switch option is also available upon request.
- ★ MCB current rating up to 63 amp, 10KA.
- ★ ELMCB current rating up to 40 amp, 10KA.
- ★ External test facility for ELMCB available upon request.
- ★ MCB/ELMCB operating handle provides indication of trip condition and resets the breaker.
- ★ Visual LED trip indication is available upon request.
- ★ For specific applications additional components can be fitted into the Multiway MCB distribution panel.
- ★ Pole configuration SP/N, DP, TP & TP/N.
- ★ SP/N versions the neutral can be arranged for early make/late break.
- ★ Standard cable entries in the bottom of the enclosure, but cable entries can be accommodated on all four enclosure walls.
- ★ Multiway enclosures can be coupled together to form large Switchrack Type Distribution and Switchboards.



Internal view of a Multiway MCB Distribution/Control Panel

Incoming or Outgoing Unit

Application

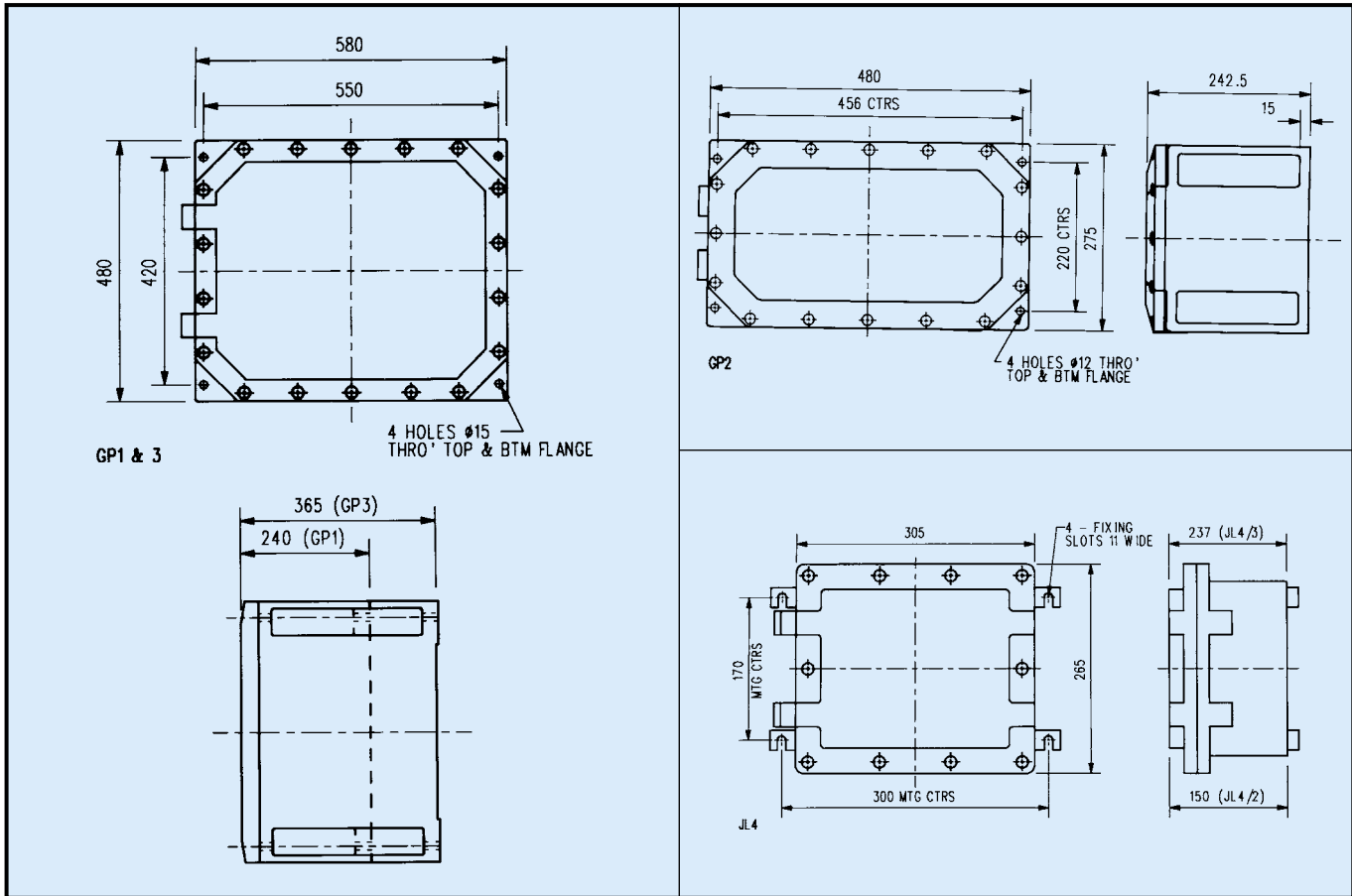
Custom built to suit clients' requirements, available in the form of Isolator, Fuse Switch, MCCB and ELMCCB and rated up to 315 amp at 600 volts a.c.

Features

- ★ Hinged cover on all enclosures.
- ★ Door interlocked and padlockable handles in "Off" position.
- ★ Current rating from 32 to 315 amp.
- ★ Pole configuration SP/N, DP, TP & TPSW/N, SW/N versions.
- ★ Standard cable entry, incoming bottom and outgoing top.
- ★ Isolators will be load making/fault breaking.
- ★ MCCB rated up to 400A, breaking capacity up to 150KA.
- ★ Shunt trip or no volt facility available on MCCB unit.
- ★ ELMCCB units are available with earth fault sensitivity, external test and reset facility.
- ★ Visual LED trip indication is available upon request.



Selection of different sized Distribution Panels incorporating Multiway MCB units.



General

Specification

Certification:	EExd IIB T4/6 CENELEC EN50014 & 18. ATEX approved. Zones 1 & 2.
Material:	SG iron (GP1, GP2, GP3, JL & G2). Marine grade alloy (GP4).
Finish:	Corrosion resistant epoxy paint (other finishes are available upon request).
Weight: (approx.)	GP4: 146kg GP3: 182kg GP1: 149kg GP2: 70kg JL4/3: 55kg JL4/2: 42kg
Operating Temperature:	GP1 & 3 = -40°C to +40°C/55°C. GP2 = -40°C to +40°C/55°C. GP4 = -55°C to +60°C. JL4 = -55°C to +40°C/55°C/60°C.
IP Rating:	Designed in accordance with IP65 (Note: GP2 IP66).
Duty/Tag Labels:	Can be fitted to client's requirements and supplied in stainless steel.
Earthing:	Internal and external earth connections fitted, stud size M6 screw.
Cable Entries:	Metric ISO thread form up to 75mm (plugs can be fitted if specified).



Multiway MCB Distribution Panel
with Incoming Isolator Switch



All the above specifications, dimensions, weights and tolerances are nominal (typical) and MEDC reserve the right to vary all data without prior notice. No liability is accepted for any consequence of use.