

CONTROL UNITS EExd and Weatherproof GP, JL & G2 Ranges



Introduction

This range of custom built control units can be used individually or combined to provide hazardous area systems for indoor or outdoor use. The enclosures can be fitted with a comprehensive range of components.

- | | | |
|---------------------------|------------------------|--|
| ★ Isolators. | ★ Indicators. | ★ ATEX approved Ex II 2G. |
| ★ Relays. | ★ Pushbuttons. | ★ BASEEFA Certified. |
| ★ Contactors. | ★ Potentiometers. | ★ IP65 & 66*. |
| ★ Transformers. | ★ RCDs (ELCBs). | ★ Variety of Enclosures. |
| ★ MCBs. | ★ Timers. | ★ Variety of Covers. |
| ★ Fuses. | ★ IS Components. | ★ Cast Iron, Stainless Steel & Marine Grade Alloy. |
| ★ Rotary Switches. | ★ Clients' Products. | ★ Component Certified. |
| ★ Printed Circuit Boards. | ★ 19" Racks. | ★ Full cover width viewing window now available. |
| ★ Invertors (fan cooled). | ★ Fire & Gas Panels. | *Model dependent |
| ★ PLCs. | ★ Zone 1 & Zone 2 use. | |
| ★ Meters. | ★ EExd. | |

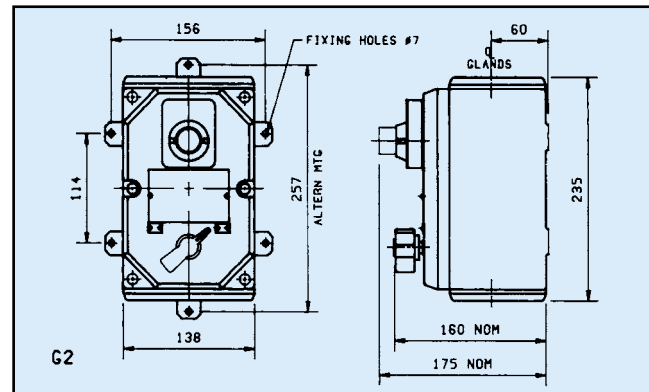
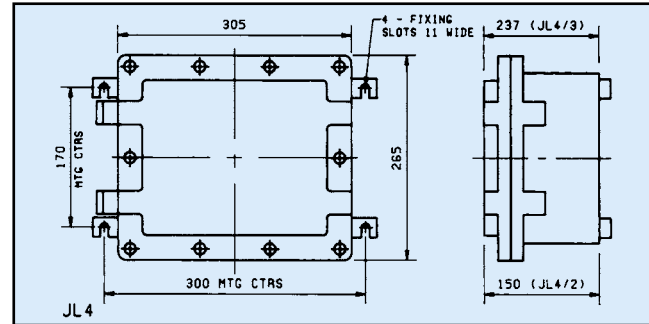
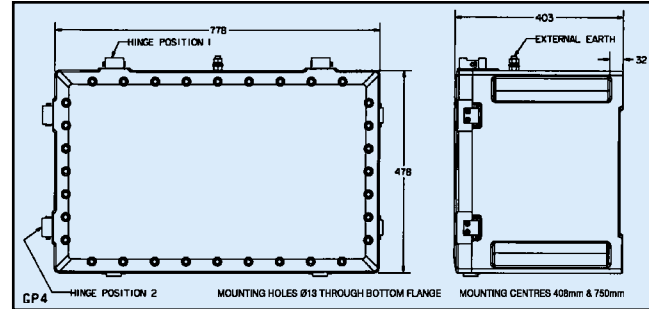
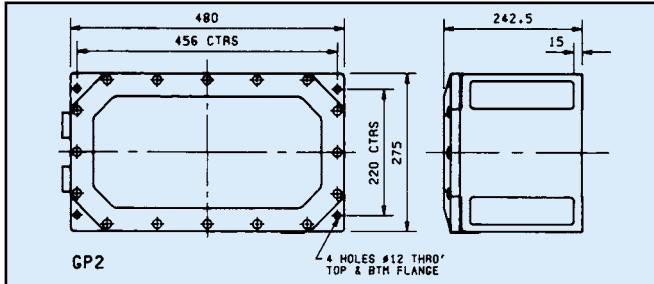
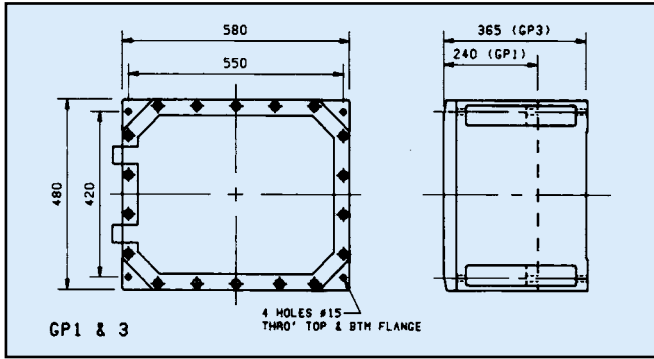
MEDC Ltd, Colliery Road,
Pinxton, Nottingham NG16 6JF, UK.
Tel: +44 (0)1773 864100
Fax: +44 (0)1773 582800

MEDC International, 5829 West Sam Houston Parkway,
North, Suite 1005, Houston, Texas 77041, USA.
Tel: +1 (713) 937 9772
Fax: +1 (713) 937 9773

MEDC Norway, Auglaendsmyraa 6,
4016, Stavanger, Norge.
Tel: +47 913 92 289
Fax: +47 914 46 030

Sales Enq. Fax: +44 (0)1773 582830 Sales Orders Fax: +44 (0)1773 582832
E-Mail: sales@medc.com Web: www.medc.com





Specification

- Isolators: - Up to 800 amp (AC1).
- Rotary Switches: - Up to 24 with ratings of up to 660V, 63A, 4 pole, 6 pos.
- Pushbutton: - Up to 36 with ratings up to 500V, 5A, 6 pole.
- Potentiometers: - Up to 10W.
- Circuit Breakers: - MCB up to 63A. MCCB up to 800A.
- Meters: - Up to 11 mounted, each behind 70 or 100mm diameter windows or 80mm square windows.
- Ammeters up to 60A direct connected or via CT.
- Voltmeters up to 660V.
- Hours run and counters.
- Indicators: - Up to 65, each mounted behind Ø25mm windows.
- Multiple mounted behind Ø70mm, Ø100mm windows & 80mm² windows.
- Multiple mounted behind 300mm x 50mm window.
- Fuses: - Up to 660V, 200A.
- Contactors: - Up to 200kw (AC 3).
- Earth Leakage: - Up to 200A.
- Transformers: - Up to 5KVA.
- Relays: - Up to 600V.
- Timers: - Electrical, mechanical or electro-mechanical.
- I.S. Equipment: - Please consult MEDC with your requirements.
- Printed circuit boards.
19" rack equipment - Mounted behind 300mm x 50mm window.
PLCs.
Inverters up to 7.5kw (fan cooled).
Motor Starters and
Distribution Units: - Please refer to separate data sheets.

- Support Frames: - Units can be supplied on free standing frames if required.
- Certification: - EExd IIB T4 & T6.
ATEX approved.
CENELEC EN 50014 & 18/EN60079-0 & EN60079-1.
Component approved enclosures simplify certification where clients wish to fit their own components into the enclosures.
- Cable Entries: - 16, 20, 25, 32, 40, 50, 63 or 75mm.
- Ingress Protection: - IP65 (note GP2, IP66).
- Ambient Temperature: - GP1 & 3 = -40°C to +40°C/55°C.
GP4 = -55°C to +60°C.
GP2 = -40°C to +40°C/55°C.
JL4 = -55°C to +40°C/55°C.
G2 = -55°C to +55°C.
- Material: - Cast iron (GP1, 2 & 3, JL & G2).
JL4/2 also in 316 stainless steel.
Marine grade alloy LM25TE (GP4).
- Finish: - Corrosion resistant epoxy paint.
- Nominal Weights: - GP1 149Kg, GP3 182Kg, GP4 146Kg,
GP2 70Kg, JL 40Kg, G2 12Kg.

Ordering Requirements

Please consult MEDC technical sales department to discuss your particular requirements



All the above specifications, dimensions, weights and tolerances are nominal (typical) and MEDC reserve the right to vary all data without prior notice. No liability is accepted for any consequence of use.