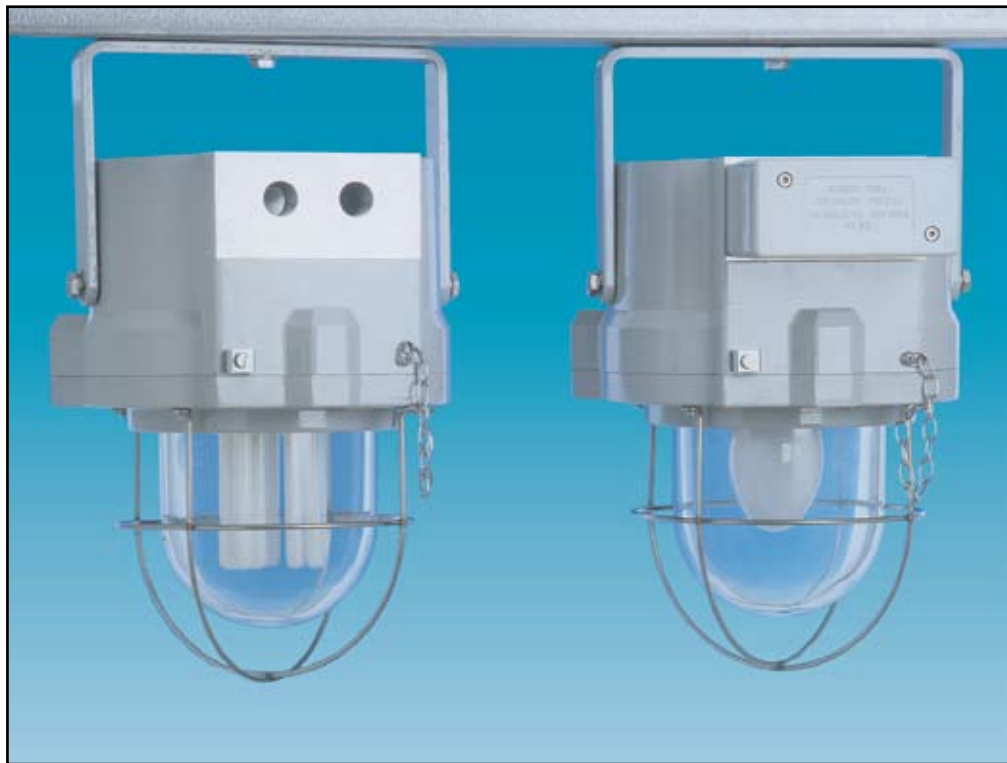


STEADY BEACONS

EExd(e), Weatherproof

FL5, FB5, MF5, HS5 Range



Introduction

These certified steady beacons have been designed for use in flammable atmospheres and harsh environmental conditions. The marine grade alloy enclosures are suitable for use offshore or onshore, where light weight combined with corrosion resistance and strength is required. Units can be painted to customer specification and fitted with identification labels.

All models available with optional EExe terminal chamber.

- ★ Zone 1 and Zone 2 use.
- ★ EExde IIBT3/T4.
- ★ ATEX approved Ex II 2G.
- ★ BASEEFA certified.
- ★ CSA certified (HS5 only).
- ★ Certified temperature -20°C to +50°C*.
- ★ IP66, IP67 & IP68.
- ★ Fluorescent/sodium/mercury/filament.
- ★ EExde version has gland earth continuity in the GRP terminal chamber.
- ★ Corrosion Resistant.
- ★ Optional guard.
- ★ Retained cover screws.

*Model dependent.

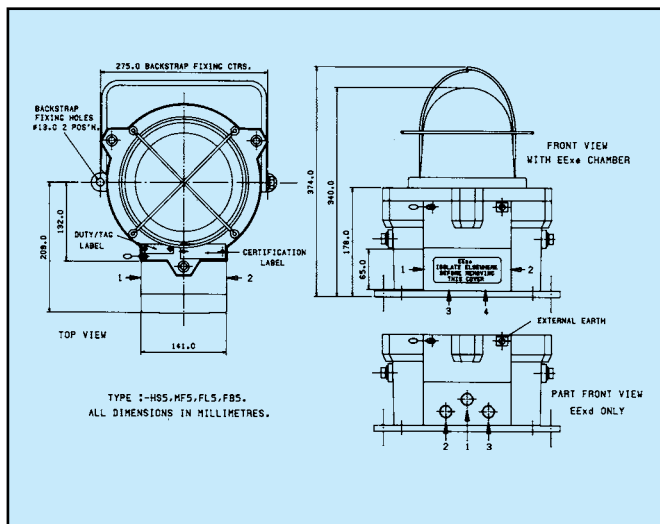
MEDC Ltd, Colliery Road,
Pinxton, Nottingham NG16 6JF, UK.
Tel: +44 (0)1773 864100
Fax: +44 (0)1773 582800

MEDC International, 5829 West Sam Houston Parkway,
North, Suite 1005, Houston, Texas 77041, USA.
Tel: +1 (713) 937 9772
Fax: +1 (713) 937 9773

MEDC Norway, Auglaendsmyrå 6,
4016, Stavanger, Norge.
Tel: +47 913 92 289
Fax: +47 914 46 030

Sales Enq. Fax: +44 (0)1773 582830 Sales Orders Fax: +44 (0)1773 582832
E-Mail: sales@medc.com Web: www.medc.com

MEDC



Specification

Model	Type	Voltage 50/60 Hz.	Lamp Wattage	T Rating	Operating Temperature	Weight EExd units*
FL5	Fluorescent	220/240/254Va.c.	52W (4x13)	T4	-20 to +50°C	13.25kg
FB5	Filament	240Va.c. (max)	200W (max.)	T3	-20 to +30°C	11.6kg
MF5	Mercury Fluorescent	220/240/254Va.c.	80W	T3	-20 to +40°C	12.9kg
HS5	High Pressure Sodium	220/240/254Va.c.	70W	T4	-20 to +40°C	13.0kg

*Add 1kg for EExe version.

Certification: CENELEC EN50014 & 50018 & 50019.

Certificate No. Baseefa02ATEX0225X.

BASEEFA – EExd IIB or EExde IIB.

CSA certified: Class I, Zone 1, Exd IIB T4.

CSA certification to E79-0-95, E-79-1-95,

C22.2 Nos. 9.0-96.

Cert. No. LR96406 (HS5 only).

To order, contact MEDC.

Material: LM25 TF marine grade alloy body.
Glass reinforced polyester (GRP) terminal chamber.
Toughened Wellglass.

Finish: Grey epoxy paint finish as standard or to customer's specification.

Ingress Protection: IP66, IP67 & IP68.

Lens: Can be coloured if required.

Lamps: Units are supplied without lamps. Please specify and order separately

Lampholder: FB5, HS5, MF5 Type ES27.
FL5 Type G24-d1.

Photometric Data: These units have been tested by BSI and test reports are available on request.

Terminals: EExe 6 off suitable for up to 6mm² cable or
EExd 8 off suitable for up to 6mm² cable.

Entries: Up to 3 x 20mm² ISO or 2 x 25mm² ISO in EExd unit.
Up to 4 x 20mm² ISO or 4 x 25mm² ISO in EExe unit.

Ordering Requirements

The following code is designed to help in the selection of the correct unit. Build up the reference number by inserting the code for each component in the appropriate box.

Model	Terminal Chamber	Voltage	Fixing	Entries	Guard	Tag Label	Finish
<div>Model</div> <div>FL5</div> <div>FB5</div> <div>MF5</div> <div>HS5</div>	<div>Terminal Chamber</div> <div>EExd</div> <div>EExde</div>	<div>Voltage</div> <div>(refer to table above for details)</div> <div>220Va.c.</div> <div>240Va.c.</div> <div>254Va.c.</div>	<div>Fixing</div> <div>Backstrap</div> <div>Stirrup</div>	<div>Entry</div> <div>20mm</div> <div>25mm</div> <div>*Prefix entry size (see diagram above) with entry position code e.g. 1B2B.</div>	<div>Guard</div> <div>None</div> <div>Guard</div>	<div>Label</div> <div>None</div> <div>Yes</div> <div>(Please specify)</div>	<div>Finish</div> <div>Grey</div> <div>Red</div> <div>Blue</div> <div>Yellow</div> <div>White</div> <div>Other (please specify)</div>
	Code	Code	Code	Code	Code	Code	Code
	D	G	B	*B	0	N	G
	E	H	S	*C	1	Y	R
		J					B
							Y
							W
							S



All the above specifications, dimensions, weights and tolerances are nominal (typical) and MEDC reserve the right to vary all data without prior notice. No liability is accepted for any consequence of use.