

# 10 JOULE XENON BEACONS for Harsh Industrial & Marine Environments XB13 Range

<b>IP66/67 Weatherproof</b>
<b>Corrosion Free GRP/Polycarbonate</b>



## Introduction

This range of ruggedised, weatherproof beacons, has been designed with high ingress protection to cope with harsh environmental conditions.

**MEDC can also provide a range of beacons suitable for use in potentially explosive atmospheres.**

**For more information, refer to the catalogue or contact MEDC.**

- ★ Weatherproof.
- ★ IP66 & IP67.
- ★ Operating temperature  $-55^{\circ}\text{C}$  to  $+70^{\circ}\text{C}$ .
- ★ Corrosion resistant red painted GRP body.
- ★ High intensity flash.
- ★ Polycarbonate lens, various colours available.
- ★ Retained stainless steel cover screws.
- ★ Optional lens guard.
- ★ Optional telephone or relay initiate.
- ★ 3 x M20 cable entries.
- ★ Replaceable tube.
- ★ Switchable dual flash.

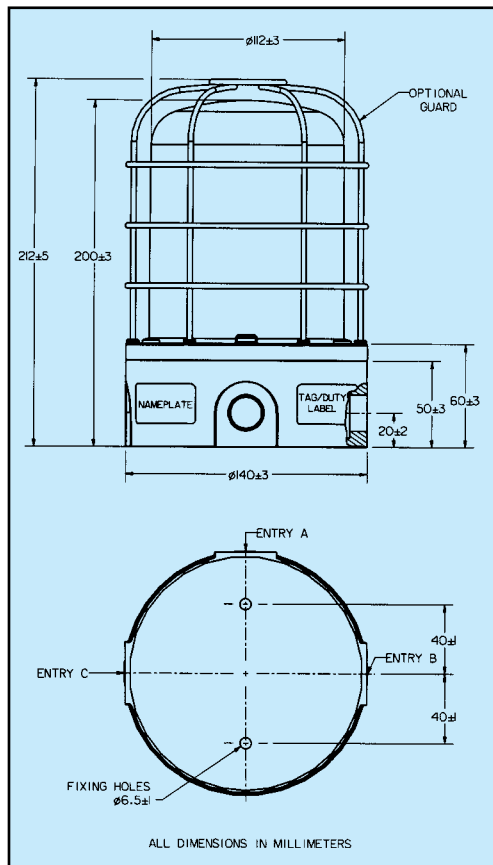
MEDC Ltd, Colliery Road,  
Pinxton, Nottingham NG16 6JF, UK.  
Tel: +44 (0)1773 864100  
Fax: +44 (0)1773 582800

MEDC International, 5829 West Sam Houston Parkway,  
North, Suite 1005, Houston, Texas 77041, USA.  
Tel: +1 (713) 937 9772  
Fax: +1 (713) 937 9773

MEDC Norway, Auglaendemyraa 6,  
4016, Stavanger, Norge.  
Tel: +47 913 92 289  
Fax: +47 914 46 030

Sales Enq. Fax: +44 (0)1773 582830 Sales Orders Fax: +44 (0)1773 582832  
E-Mail: [sales@medc.com](mailto:sales@medc.com) Web: [www.medc.com](http://www.medc.com)





## Specification

Material:	UV stable glass reinforced polyester body. UV stable polycarbonate cover/lens. Retained stainless steel cover screws.																																			
Finish:	Painted red as standard or to Customer's specification.																																			
Tube Energy:	10 Joules (second flash 7.5 Joules).																																			
Weight:	1.1kg,																																			
Operating Temperature:	-55°C to +70°C.																																			
Ingress Protection:	IP66 & IP67.																																			
Tube Life:	>1 x 10 <sup>6</sup> flashes.																																			
Voltage:	12V d.c., 24V d.c., 115V a.c., 230V a.c.																																			
Current Consumption:	<table><tr><td>Voltage</td><td colspan="5">Current Consumption</td></tr><tr><td>12V d.c.</td><td colspan="5">1.4A</td></tr><tr><td>24V d.c.</td><td colspan="5">650mA</td></tr><tr><td>115V a.c.</td><td colspan="5">180mA</td></tr><tr><td>230V a.v.</td><td colspan="5">100mA</td></tr></table>						Voltage	Current Consumption					12V d.c.	1.4A					24V d.c.	650mA					115V a.c.	180mA					230V a.v.	100mA				
Voltage	Current Consumption																																			
12V d.c.	1.4A																																			
24V d.c.	650mA																																			
115V a.c.	180mA																																			
230V a.v.	100mA																																			
Tube Type:	Xenon discharge.																																			
Lens Colour:	Various colours available.																																			
Terminals:	8 x 2.5mm <sup>2</sup> .																																			
Flash Rate:	1 flash per second.																																			
Dual Flash Rate:	Time between dual flashes = 0.5 seconds. Charging time = 1 second. Cycle repeats every 1.5 seconds.																																			
Labels:	Duty and tag labels available.																																			
Cable Entries:	Up to 3 x M20 via knockouts.																																			
Intensity:	Effective intensity 220 Cd. Peak intensity 75,000 Cd. (Figures are for clear lens at 1Hz flash rate).																																			
	FOR COLOURED LENSES																																			
	Colour	Red	Blue	Amber	Green	Yellow																														
	Multiplying Factor	0.15	0.12	0.51	0.49	0.86																														

## Ordering Requirements

The following code is designed to help in the selection of the correct unit. Build up the reference number by inserting the code for each component into the appropriate box. **Standard products available ex-stock as follows:**

Product	Description
<b>XB13024RNNR</b>	Weatherproof, 10J, 24V d.c., red lens, painted red body.
<b>XB13024ANNR</b>	Weatherproof, 10J, 24V d.c., amber lens, painted red body.
<b>XB13230RNNR</b>	Weatherproof, 10J, 230V a.c., red lens, painted red body.
<b>XB13230ANNR</b>	Weatherproof, 10J, 230V a.c., amber lens, painted red body.

Unit Type	Voltage	Lens Colour	Lens Guard	Options	Unit Finish																																																				
XB13																																																									
	<table><tr><th>Voltage</th><th>Code</th></tr><tr><td>12V d.c.</td><td>012</td></tr><tr><td>24V d.c.</td><td>024</td></tr><tr><td>115V a.c.</td><td>115</td></tr><tr><td>230V a.c.</td><td>230</td></tr></table>	Voltage	Code	12V d.c.	012	24V d.c.	024	115V a.c.	115	230V a.c.	230	<table><tr><th>Colour</th><th>Code</th></tr><tr><td>Red</td><td>R</td></tr><tr><td>Blue</td><td>B</td></tr><tr><td>Green</td><td>G</td></tr><tr><td>Yellow</td><td>Y</td></tr><tr><td>Amber</td><td>A</td></tr><tr><td>Clear</td><td>C</td></tr></table>	Colour	Code	Red	R	Blue	B	Green	G	Yellow	Y	Amber	A	Clear	C	<table><tr><th>Guard</th><th>Code</th></tr><tr><td>Yes</td><td>Y</td></tr><tr><td>None</td><td>N</td></tr></table>	Guard	Code	Yes	Y	None	N	<table><tr><th>Option</th><th>Code</th></tr><tr><td>Duty</td><td>D*</td></tr><tr><td>Tag</td><td>T*</td></tr><tr><td>Telephone Initiate</td><td>I</td></tr><tr><td>Relay Initiate</td><td>R</td></tr><tr><td>None</td><td>N</td></tr><tr><td colspan="2">*Please specify wording</td></tr></table>	Option	Code	Duty	D*	Tag	T*	Telephone Initiate	I	Relay Initiate	R	None	N	*Please specify wording		<table><tr><th>Colour</th><th>Code</th></tr><tr><td>Painted Red</td><td>R</td></tr><tr><td>Special</td><td>S*</td></tr><tr><td colspan="2">*Please specify</td></tr></table>	Colour	Code	Painted Red	R	Special	S*	*Please specify	
Voltage	Code																																																								
12V d.c.	012																																																								
24V d.c.	024																																																								
115V a.c.	115																																																								
230V a.c.	230																																																								
Colour	Code																																																								
Red	R																																																								
Blue	B																																																								
Green	G																																																								
Yellow	Y																																																								
Amber	A																																																								
Clear	C																																																								
Guard	Code																																																								
Yes	Y																																																								
None	N																																																								
Option	Code																																																								
Duty	D*																																																								
Tag	T*																																																								
Telephone Initiate	I																																																								
Relay Initiate	R																																																								
None	N																																																								
*Please specify wording																																																									
Colour	Code																																																								
Painted Red	R																																																								
Special	S*																																																								
*Please specify																																																									



All the above specifications, dimensions, weights and tolerances are nominal (typical) and MEDC reserve the right to vary all data without prior notice. No liability is accepted for any consequence of use.