



DO NOT SCALE

1/ TYPE SL5 STATUS LAMP

2/ CERTIFICATION No. BASEEFA Ex97D3275X

3/ WEIGHT 1.2kg ± 0.2

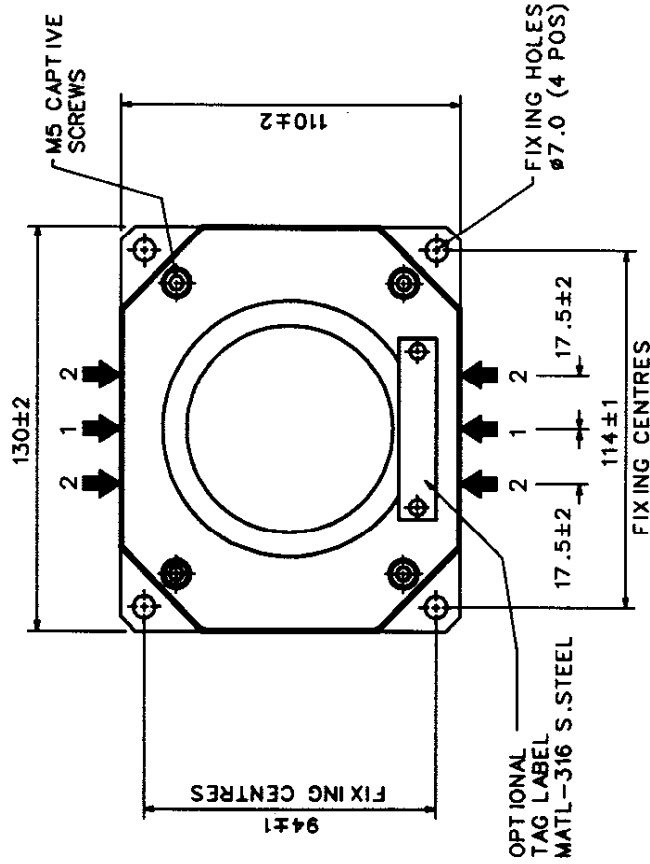
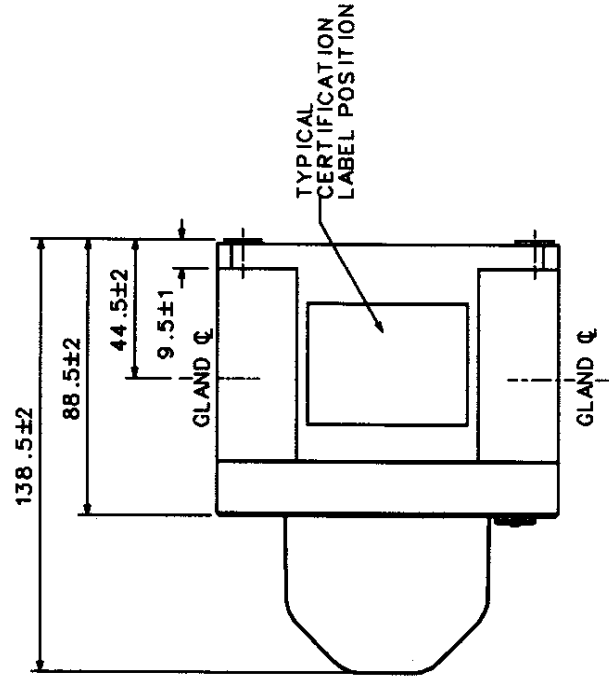
4/ MATERIAL :- (ENCLOSURE) BLACK GLASS FILLED POLYESTER.
(LENS) POLYCARBONATE GRADE 2803

5/ CERTIFICATION LABEL LETTER SIZE 3mm MAX.

6/ TAG LABEL LETTER SIZE 5mm MAX.

7/ TERMINALS SUITABLE FOR UPTO 4mm SQ CABLE AS STANDARD.

8/ CABLE ENTRIES AVAILABLE TOP AND BOTTOM
AT POSITIONS '1' UPTO 1xM32 ENTRY
OR POSITIONS '2' UPTO 2xM20 ENTRIES.



MEDC, Colliery Road, Pinxton,
Nottingham NG16 6JF, U.K
Tel: +44 (0)1773 812249
fax: +44 (0)1773 580282
DESIGNERS & MANUFACTURERS
OF ELECTRICAL & ELECTRONIC
EQUIPMENT & SYSTEMS FOR
HAZARDOUS AREAS

ISSUES		DRAWN BY:		DATE:		TITLE	
		C.FOSTER		25-7-97		SL5 STATUS LIGHT (SINGLE)	
		CHECKED BY:		13-10-97		GENERAL	
		APPROVED BY:		13-10-97		ARRANGEMENT	
		SCALE: —		SIZE A4		DRG No. S/103-01-01	
						ISSUE A	

THIS DRAWING IS CONFIDENTIAL
AND IS THE PROPERTY OF MEDC
AND MUST NOT BE REPRODUCED
EITHER WHOLLY OR PARTLY.
ALL RIGHTS IN RESPECT OF
PATENTS, DESIGNS AND
COPYRIGHT ARE RESERVED.

ALL DIMENSIONS ARE
IN MILLIMETRES UNLESS
OTHERWISE STATED

REMOVE ALL BURRS
AND SHARP EDGES

MACHINE
SYMBOLS THUS $\nabla_{\mu m}$