

# STATUS LAMP EExe(m), Weatherproof SL5 Range



*Now also with Blue and Clear LEDs*



## Introduction

Manufactured in GRP, with a high ingress protection and high light output, these status lamps have been designed for use in potentially explosive atmospheres and harsh environmental conditions such as those found offshore and onshore in the petrochemical industries.

A long life, high intensity, LED version is now available.

- ★ Zone 1 and Zone 2 use.
- ★ EExe(m) II T3/T4.
- ★ ATEX approved, Ex II 2G.
- ★ BASEEFA certified.
- ★ Chinese (CQST) certified.
- ★ IP66 and IP67.
- ★ Certified temperature  $-40^{\circ}\text{C}$  to  $+55^{\circ}\text{C}^*$ .
- ★ Corrosion resistant GRP.
- ★ Filament lamps (up to 5 pairs).
- ★ Xenon & LED versions available.
- ★ Various lamp colours.
- ★ Lightweight.
- ★ Retained stainless steel cover screws.

\*Depending on version.

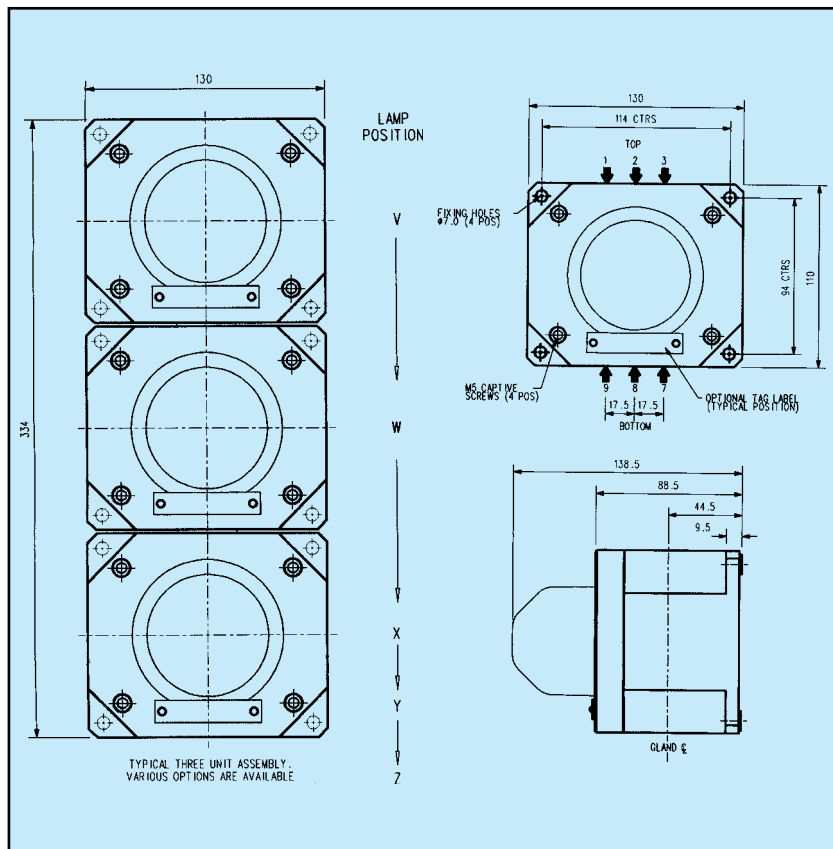
MEDC Ltd, Colliery Road,  
Pinxton, Nottingham NG16 6JF, UK.  
Tel: +44 (0)1773 864100  
Fax: +44 (0)1773 582800

MEDC International, 5829 West Sam Houston Parkway,  
North, Suite 1005, Houston, Texas 77041, USA.  
Tel: +1 (713) 937 9772  
Fax: +1 (713) 937 9773

MEDC Norway, Auglaendsmyraa 6,  
4016, Stavanger, Norge.  
Tel: +47 913 92 289  
Fax: +47 914 46 030

Sales Enq. Fax: +44 (0)1773 582830 Sales Orders Fax: +44 (0)1773 582832  
E-Mail: [sales@medc.com](mailto:sales@medc.com) Web: [www.medc.com](http://www.medc.com)

# MEDC



## Specification

Certification: CENELEC EN50014, 19 & 28.

Cert. No. BAS02ATEX2108X.

EExem II T3/T4. Zones 1 & 2.

Chinese (CQST) – Exem II T4, LED

– Exe II T3, Filament

– Exem II T4, Xenon

**Material:** UV stable, glass reinforced polyester with polycarbonate wellglass. Captive stainless steel cover screws.

**Finish:** Body natural black or painted to client specifications.

**Weight:** 1.2kg 1 way.

**Certified:** –40°C to +55°C (Filament & Xenon).

**Temperature:** –40°C to +45°C (LED).

**Ingress**

**Protection:** IP66 and IP67.

**Voltages:** d.c. – 12V, 24V, 48V.

a.c. – 110V, 220V, 240V, 254V, 260V.

Note: Xenon & LED versions only available in 24V and 48V.

**Current Consumption:**

	Voltage:	24V	48V
Xenon	Current:	120mA	95mA
LED	Current:	130-180mA	70-90mA

**Light Module:** Up to 5 ways – Filament: 2 x 5W.

Xenon: 1J (nominal).

LED: Up to 400Cd.

**Light Module Colours:** Red, Amber, Yellow, Green, Blue or Clear.

**Terminals:** Filament: Max 12 x 4mm<sup>2</sup>.  
Xenon: Max 16 x 2.5mm<sup>2</sup>.  
LED: Max 16 x 2.5mm<sup>2</sup> or 4mm<sup>2</sup>.

**Wiring:** Standard configuration of internal wiring is to common the negative/neutral connections. If individually wired lamps are required, please state.

**Labels:** Optional stainless steel tag/duty label.

**Entries:**

Size	Maximum Number	Entry Positions	
		Top	Bottom
M16	2	Any	Any
M20	2	Any	Any
M25/M32	1	2	8

## Ordering Requirements

The following code is designed to help in the selection of the correct unit. Build up the reference number by inserting the code for each component into the appropriate box.

Unit		Type		Lamp Type Positions					Voltage		Cable Entries		Duty/Tag Label		Finish	
Unit	Type	V	W	X	Y	Z	Voltage	Code	Entries	Code	Label	Code	Finish	Code		
SL5																
Type	Code	Indicate light module type					*Voltage	Code	Entries	Code	Label	Code				
Uncertified	W	Filament 1 LED Steady 3					12V d.c.	012	M16	*A	Duty Label	D*				
EExe(m)	E	Xenon 2 LED Flashing 4					24V d.c.	024	M20	*B	Tag	T*				
Chinese (CQST)	Q	Suffixed by colour required:					48V d.c.	048	M25	*C	None	N				
		Lamp Colours					110V a.c.	110	M32	*D	*Specify wording.					
		Red R					220V a.c.	220	*Prefix with cable entry position. (See diagram above) E.g. 7A, 9A.					Finish	Code	
		Amber A					240V a.c.	240						Natural Black	N	
		Yellow* Y					254V a.c.	254						Red	R	
		Green G					260V a.c.	260						Special	S*	
		Blue B												*Please specify		
		Clear C														

\*LED not available

\*Note:  
Xenon and LED versions are only available in 24V and 48V d.c.

EXAMPLE: A two way EExe certified unit, with filament lamps coloured red top, blue bottom, rated 240V, with 2 x M20 bottom entries, finished in red would be our ref: SL5EV1RW1B2407B9BNR.

All the above specifications, dimensions, weights and tolerances are nominal (typical) and MEDC reserve the right to vary all data without prior notice. No liability is accepted for any consequence of use.

