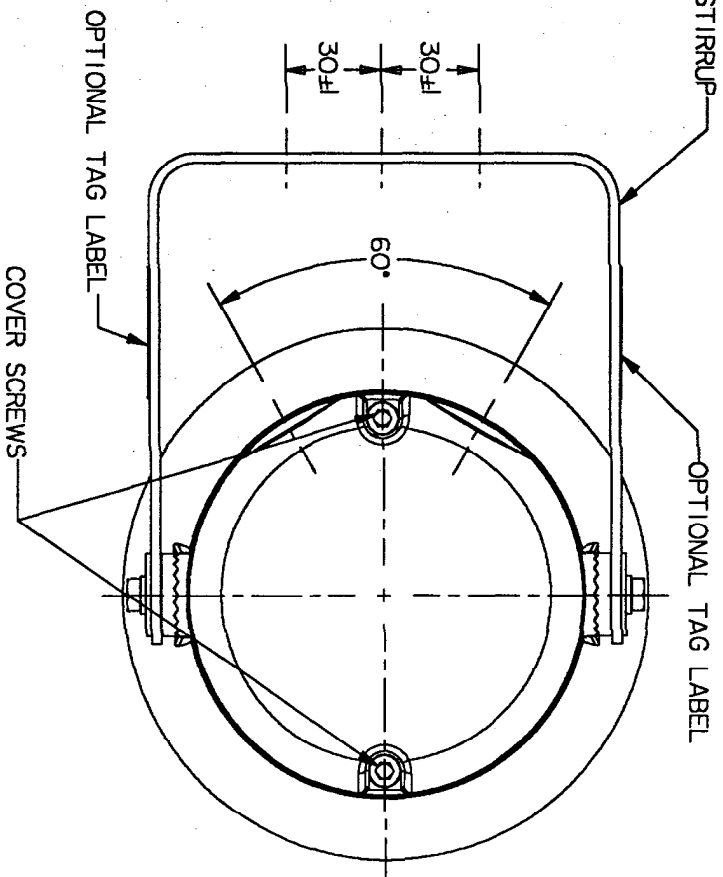
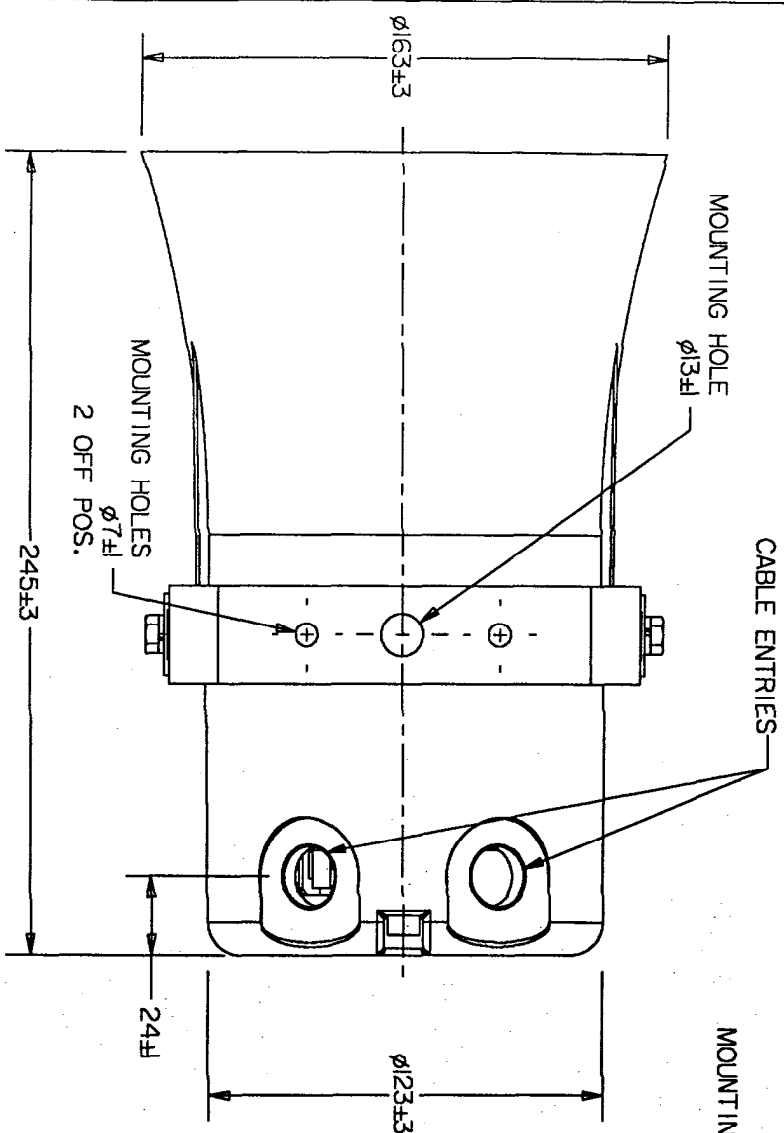


DO NOT SCALE



1. TYPE. ISW INDUSTRIAL SPEAKER
2. AMBIENT TEMPERATURE: -55°C TO $+55^\circ\text{C}$
3. WEIGHT: $2.6\text{KG} \pm 0.3$
4. MATERIAL: GRP BODY & STAINLESS STEEL FIXINGS
5. TAG LABEL LETTER SIZE, 5 MAX.
6. TERMINALS: $8 \times 2.5\text{mm}^2$
7. CABLE ENTRIES: MAX. 2 OFF M20 OR $1/2"$ NPT
8. OPTIONS: PAINT FINISH

ISSUES	ALL DIMENSIONS ARE IN MILLIMETRES UNLESS OTHERWISE STATED	REMOVE ALL BURRS AND SHARP CORNERS	THIS DRAWING IS CONFIDENTIAL AND IS THE PROPERTY OF MEDC AND MUST NOT BE REPRODUCED EITHER WHOLLY OR PARTLY. ALL RIGHTS IN RESPECT OF PATENTS, DESIGNS AND COPYRIGHT ARE RESERVED
--------	---	------------------------------------	---



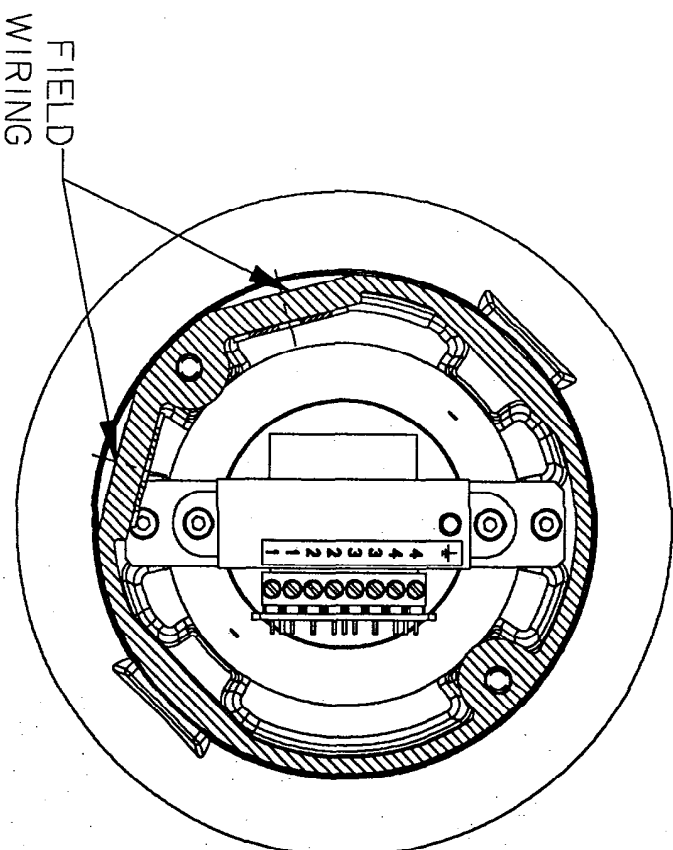
MEDC Ltd, Colliery Road, Pinxton
 Nottingham NG16 6JF, U.K.
 Tel: +44 (0)1773 864100
 Fax: +44 (0)1773 582800
 e-mail: info@medc.com web: www.medc.com

DRAWN BY: M. SELDEN	DATE: 02/10/01	CHECKED BY: P. OATES	DATE: 02/10/01	APPROVED BY: M. SELDEN	DATE: 02/10/01	SCALE: 2:5	SIZE: A4	DRG No. 255-112	ISSUE A
------------------------	-------------------	-------------------------	-------------------	---------------------------	-------------------	---------------	-------------	--------------------	------------

STANDARD CUSTOMER GA
 DB14 LOUDSPEAKER

DESIGNERS & MANUFACTURERS
 OF ELECTRICAL & ELECTRONIC
 EQUIPMENT & SYSTEMS FOR
 HAZARDOUS AREAS

DO NOT SCALE



TRANSFORMER TAPPINGS	15 WATT TRANSFORMER
1 & 2	15.0W
2 & 3	7.5W
3 & 4	5.0W
1 & 3	4.0W
2 & 4	2.0W
1 & 4	0.8W

CELL BOOK

H

CURRENT
PRODUCTION COPY

NOTE:
NUMBERS ON TERMINAL LABEL ARE IN PAIRS TO FACILITATE
LOOP-IN LOOP-OUT OPTION.
(TERMINALS ARE LINKED VIA PCB TRACKING)



MEDC Ltd, Colliery Road, Pinxton
Nottingham NG16 6JF, U.K.
Tel: +44 (0)1773 864100
Fax: +44 (0)1773 582800
e-mail: info@medc.com web: www.medc.com

DESIGNERS & MANUFACTURERS
OF ELECTRICAL & ELECTRONIC
EQUIPMENT & SYSTEMS FOR
HAZARDOUS AREAS

TITLE

WIRING DIAGRAM

4 WIRE INPUT - 15W TRANSFORMER
DB14 INDUSTRIAL SPEAKER

ISSUES

ALL DIMENSIONS ARE
IN MILLIMETRES UNLESS
OTHERWISE STATED

REMOVE ALL BURRS
AND SHARP CORNERS

MACHINE
SYMBOLS THIS

V

THIS DRAWING IS CONFIDENTIAL
AND IS THE PROPERTY OF MEDC
AND MUST NOT BE REPRODUCED
EITHER WHOLLY OR PARTLY.
ALL RIGHTS IN RESPECT OF
PATENTS, DESIGNS AND
COPYRIGHT ARE RESERVED

DRAWN BY:

G.HODGKINSON

DATE:

31/5/00

CHECKED BY:

M.SELDEN

DATE:

31/5/00

APPROVED BY:

G.HODGKINSON

DATE:

31/5/00

SCALE:

NTS

SIZE:

A4

DRG No.

255-109

ISSUE

A