



ISO9001 Certified

MEDC Ltd
Colliery Road,
Pinxton,
Nottingham,
NG16 6JF
United Kingdom

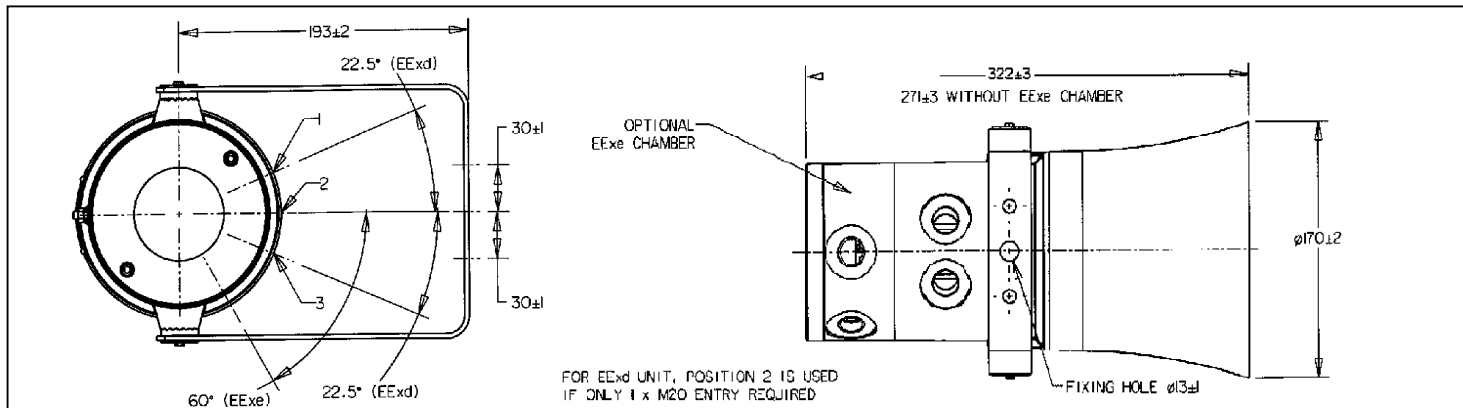
Tel: +44 (0) 1773 864100
Fax: +44 (0) 1773 582800
E-mail: sales@medc.com
Web-site: www.medc.com

MEDC International
Houston USA
MEDC Norway
Stavange Norway

Phone: +1 (713) 937 9772 Fax: +1 (713) 937 9773 E-Mail: us.sales@medcint.com

Phone: +47 51 82 98 98 Fax: +47 51 82 98 91 E-Mail: norway.sales@medc.com

DB4 – 20W Range



FOR EEExd UNIT, POSITION 2 IS USED
IF ONLY 1 x M20 ENTRY REQUIRED

Certification: **ATEX (Standard DB4):** ATEX Ex II 2GD, EEExd IIC T135°C (-20°C T_{amb} +50°C)
ATEX (Low.Temp DB4): ATEX Ex II 2GD, EEExd IIC T135°C (-55°C T_{amb} + 50°C)
DB4 Exd BASEEFA Cert. no. BAS00ATEX2097X
DB4 Exde BASEEFA Cert. no. BAS00ATEX2098X
Zones 1 & 2. Not suitable for use in atmospheres containing carbon disulphide.
GOST 'R' Certification: 1 Exd IIC T4 & 1 Exde IIC T4.
GOST 'K' Certification: 1Exd IIC T4
Other Certifications : SAA (Australia), ABS (American bureau of shipping)

Transformer Tappings	Power
	20W
1:2	20.0
2:3	10.0
3:4	6.0
1:3	5.0
2:4	2.0
1:4	1.5

Material/Colour	Glass reinforced Polyester / Black	
Mounting	Bracket	
Termination	8 x 2.5mm ²	
Weight	5.0kg (11lb) 0.5kg add (1.1lb) for EEExe	
IP-Rating (UL Equivalent)	66 & 67 (Nema 4X & 66)	
Max. / Min. amb. temp	Exd	Exde
DB4	-20°C + 50°C	-20°C + 50°C
DB4L	-55°C + 50°C	-55°C + 50°C
Rated / Max. power	20 Watts	
SPL 1W/1m	107dba	
SPL rated power	118db	
Effective freq. range	400 – 8000Hz	
Dispersion 1kHz	140	
Options	Body colour, Transformer Voltage, Duty / Tag label, Entries.	

