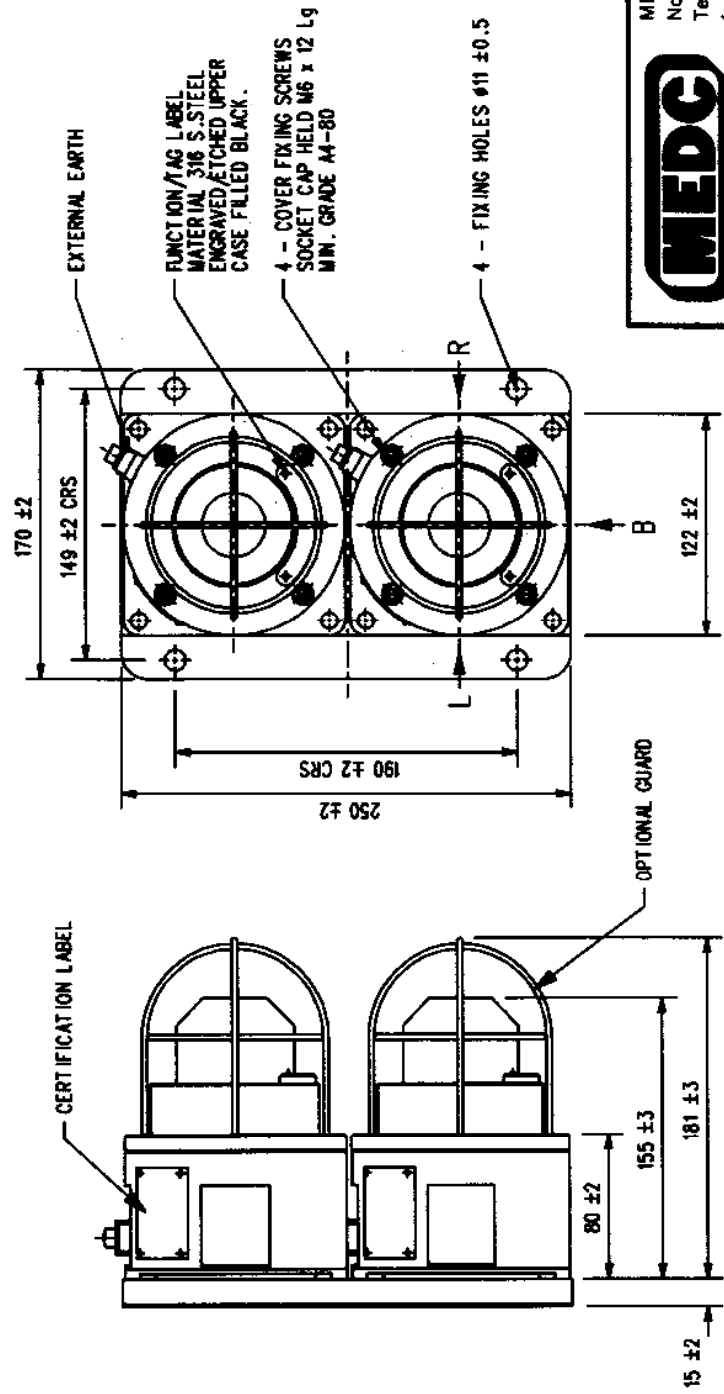


DO NOT SCALE








- 6/ TERMINALS SUITABLE FOR UP TO 2.5mm SQ. CABLE AS STANDARD.
- 7/ CABLE ENTRIES AVAILABLE AT "B" "L" "R" A MAXIMUM OF ONE ENTRY PER FACE.
- 8/ HYLOMAR PL32 SEALANT APPLIED TO ALL CERTIFIED BLANKING PLUGS.
- 9/ BACKPLATE THICKNESS 1.6mm ± 0.5

- 1/ TYPE - SM87SL2
- 2/ CERTIFICATION No. BASEEFA E88B1232
- 3/ MATERIAL - STAINLESS STEEL GRADE 316/ANC 4B TO BS 3146:1975.
- 4/ WEIGHT - 8.0Kg ± 0.3
- 5/ TAG LABEL LETTER SIZE 5mm MAX.



MEDC, Colliery Road, Pinxton,
Nottingham NG16 6JF, U.K.
Tel: +44 (0)1773 812249
fax: +44 (0)1773 580282

DESIGNERS & MANUFACTURERS
OF ELECTRICAL & ELECTRONIC
EQUIPMENT & SYSTEMS FOR
HAZARDOUS AREAS

ISSUES	ALL DIMENSIONS ARE IN MILLIMETRES UNLESS OTHERWISE STATED		THIS DRAWING IS CONFIDENTIAL AND IS THE PROPERTY OF MEDC AND MUST NOT BE REPRODUCED EITHER WHOLLY OR PARTLY. ALL RIGHTS IN RESPECT OF PATENTS, DESIGNS AND COPYRIGHT ARE RESERVED.		DRAWN BY: S. TOMLINSON	DATE: 2-10-97	TITLE SM87 SL2 GENERAL ARRANGEMENT	DRG No. S/04-01	ISSUE A
	REMOVE ALL BURRS AND SHARP EDGES		CHECKED BY: 		DATE: 				
	MACHINE SYMBOLS THUS  μm		APPROVED BY: 		DATE: 				
			SCALE: —		SIZE A4				