

DO NOT SCALE

1/ TYPE PBE I.W.

2/ CERTIFICATION No. PBE:- Baseefa BAS02ATEX2105X

T135°C EEx emd IIC T4 (-20°C Tamb +50°C)

OR T85°C EEx ed IIC T6 (-20°C Tamb +50°C)

PBE:- BASEEFA Ex90C2373 EEx ia IIC T4

PGW:- INDUSTRIAL

3/ WEIGHT:- 1.3kg±0.2

4/ MATERIAL:- BLACK GLASS FILLED POLYESTER.

5/ FUNCTION LABEL LETTER SIZE 5mm MAX.

6/ NAMEPLATE LABEL LETTER SIZE 3mm MAX.

7/ TAG LABEL LETTER SIZE 5mm MAX.

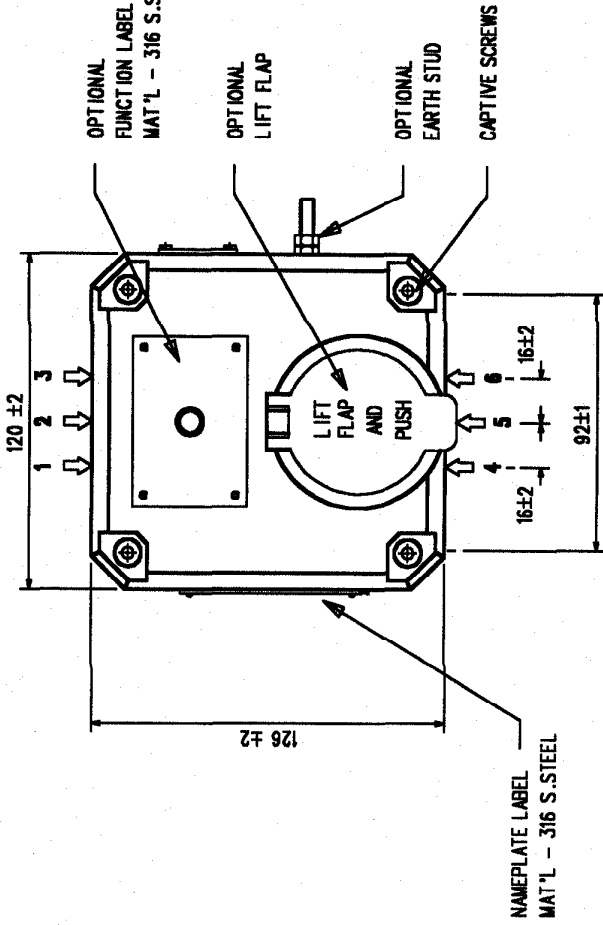
8/ TERMINALS SUITABLE FOR UPTO 2.5mm SQ. CABLE AS STANDARD,

OR SUITABLE FOR UPTO 4.0mm SQ. CABLE AVAILABLE ON REQUEST.

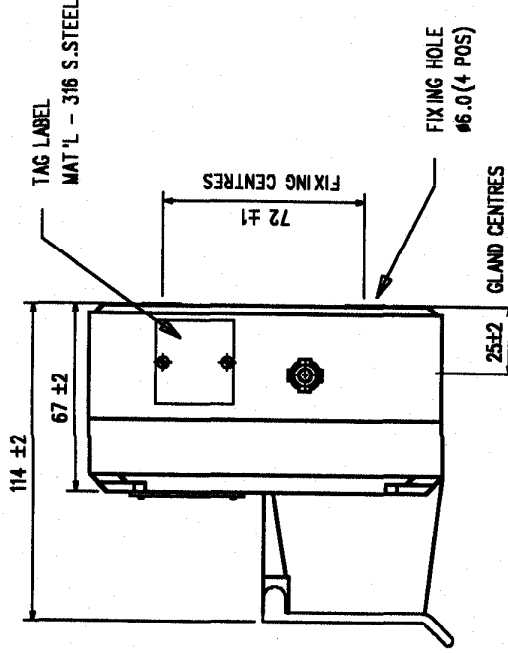
9/ CABLE ENTRIES AVAILABLE AT "1" "2" "3" "4" "5" & "6".

A MAXIMUM OF TWO ENTRIES PER FACE IN POSITIONS 1 & 3 OR 4 & 6.

10/ RESET KEY PROVIDED FOR LATCHING VERSION /BATCH.



FRONT VIEW




SIDE VIEW



MEDC Ltd, Colliery Road, Pinxton,  
Nottingham NG16 6JF, U.K.  
Tel: +44 (0)1773 864100  
fax: +44 (0)1773 582800  
e-mail: info@medc.com  
web: www.medc.com

DESIGNERS & MANUFACTURERS  
OF ELECTRICAL & ELECTRONIC  
EQUIPMENT & SYSTEMS FOR  
HAZARDOUS AREAS

ISSUES		B. 31-01-03 SH		ALL DIMENSIONS ARE IN MILLIMETRES UNLESS OTHERWISE STATED		THIS DRAWING IS CONFIDENTIAL AND IS THE PROPERTY OF MEDC AND MUST NOT BE REPRODUCED EITHER WHOLLY OR PARTLY. ALL RIGHTS IN RESPECT OF PATENTS, DESIGNS AND COPYRIGHT ARE RESERVED.		DRAWN BY: C. FOSTER		DATE: 9-3-93		TITLE PBE I,W	
				REMOVE ALL BURRS AND SHARP EDGES				CHECKED BY: A.S.H.		DATE: 9-3-93			
								APPROVED BY: SUM		DATE: 9-3-93			
				MACHINE SYMBOLS THUS 				SCALE:		SIZE A4		DRG No. PBE-I-W	
												ISSUE B	

THIS DRAWING IS CONFIDENTIAL AND IS THE PROPERTY OF MEDC AND MUST NOT BE REPRODUCED EITHER WHOLLY OR PARTLY. ALL RIGHTS IN RESPECT OF PATENTS, DESIGNS AND COPYRIGHT ARE RESERVED.