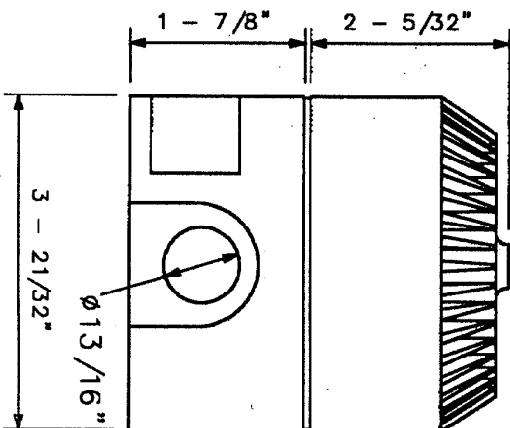
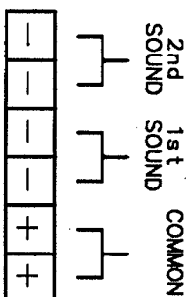


VIEW ON INSIDE OF BASE



- 1/ TYPE:- DB5 & DB51 SOUNDER
- 2/ FM APPROVAL FOR CLASS 1, DIV.1, GROUPS A, B, C, D
J.I. 3008604
AMBIENT TEMP -4°F TO +131°F
- 3/ WEIGHT:- 3/4 LB APPROX
- 4/ MATERIAL:- ABS POLYMER
- 5/ IDENTITY/TAG LABEL LETTER SIZE 3/16" MAX.
- 6/ TERMINALS SUITABLE FOR CABLE UPTO 14 AWG
- 7/ UP TO 2 OFF 13/16" KNOCK-OUTS
- 8/ SEALANT TO BE APPLIED TO ALL GLANDS & BLANKING PLUGS
- 9/ GENERAL TOLERANCE $\pm 3/32"$



WARNING

THIS DRAWING RELATES
TO A CERTIFIED PRODUCT.
NO MODIFICATIONS
PERMITTED WITHOUT
THE AUTHORIZATION OF
THE TECHNICAL MANAGER

CURRENT

PRODUCTION COPY

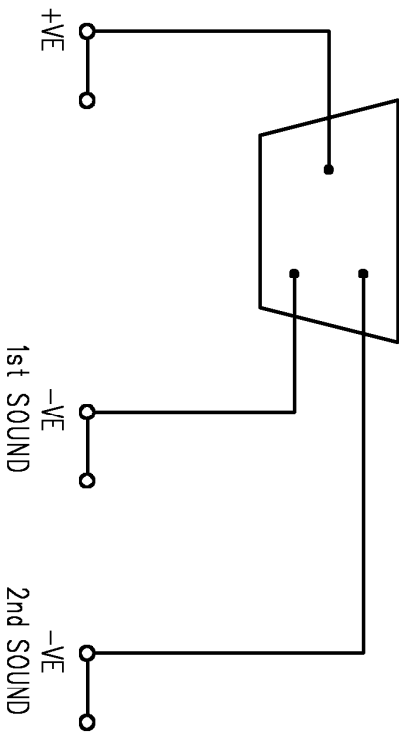
ISSUES		ALL DIMENSIONS ARE IN MILLIMETRES UNLESS OTHERWISE STATED		THIS DRAWING IS CONFIDENTIAL AND IS THE PROPERTY OF MEDC AND MUST NOT BE REPRODUCED EITHER WHOLLY OR PARTLY. ALL RIGHTS IN RESPECT OF PATENTS, DESIGNS AND COPYRIGHT ARE RESERVED.		MACHINE SYMBOLS THIS	



MEDC, Colliery Road, Preston,
Wideningham NG16 6LE, U.K.
Tel: +44 (0)1773 812249
Fax: +44 (0)1773 560282

DESIGNERS & MANUFACTURERS
OF ELECTRICAL & ELECTRONIC
EQUIPMENT & SYSTEMS FOR
HAZARDOUS AREAS

DRAWN BY: D. HAGIN	DATE: 19-04-01	TITLE DB5 & DB51 SOUNDER CUSTOMER G.A. FM VERSION
CHECKED BY: M. SELDEN	DATE: 19-04-01	
APPROVED BY: D. HAGIN	DATE: 19-04-01	
SCALE: NTS	SIZE A3	DWG No. 187-212
		ISSUE A



CURRENT
PRODUCTION COPY

CELL NO. J

 <div>MEDC, Colliery Road, Pinxton, Nottingham NG16 6JF, U.K. Tel: +44 (0)1773 812249 .fax: +44 (0)1773 580282</div> <div>DESIGNERS & MANUFACTURERS OF ELECTRICAL & ELECTRONIC EQUIPMENT & SYSTEMS FOR HAZARDOUS AREAS</div>	
DRAWN BY: S. HUNT DATE: 07-06-99	
CHECKED BY: D.HAGIN DATE: 13-03-01	
APPROVED BY: M.SELDEN DATE: 16-03-01	
SCALE: SIZE A4	
TITLE DB5 - CUSTOMER WIRING DIAGRAM	
DRG No. 187-160	
ISSUE A	

ISSUES	ALL DIMENSIONS ARE IN MILLIMETRES UNLESS OTHERWISE STATED	THIS DRAWING IS CONFIDENTIAL AND IS THE PROPERTY OF MEDC AND MUST NOT BE REPRODUCED EITHER WHOLLY OR PARTLY. ALL RIGHTS IN RESPECT OF PATENTS, DESIGNS AND COPYRIGHT ARE RESERVED.
	REMOVE ALL BURRS AND SHARP EDGES	
	MACHINE SYMBOLS THUS 