



I/ TYPE FBI2 STEADY BEACON

2/ CERTIFICATION No. - BAS99ATEX2196

112G EEx d IIB T3 (Tamb. -55°C to +30°C)

T4 (Tamb. -55°C to +55°C)

T5 (Tamb. -55°C to +40°C)

3/ WEIGHT :- 7.6Kg \pm 0.3

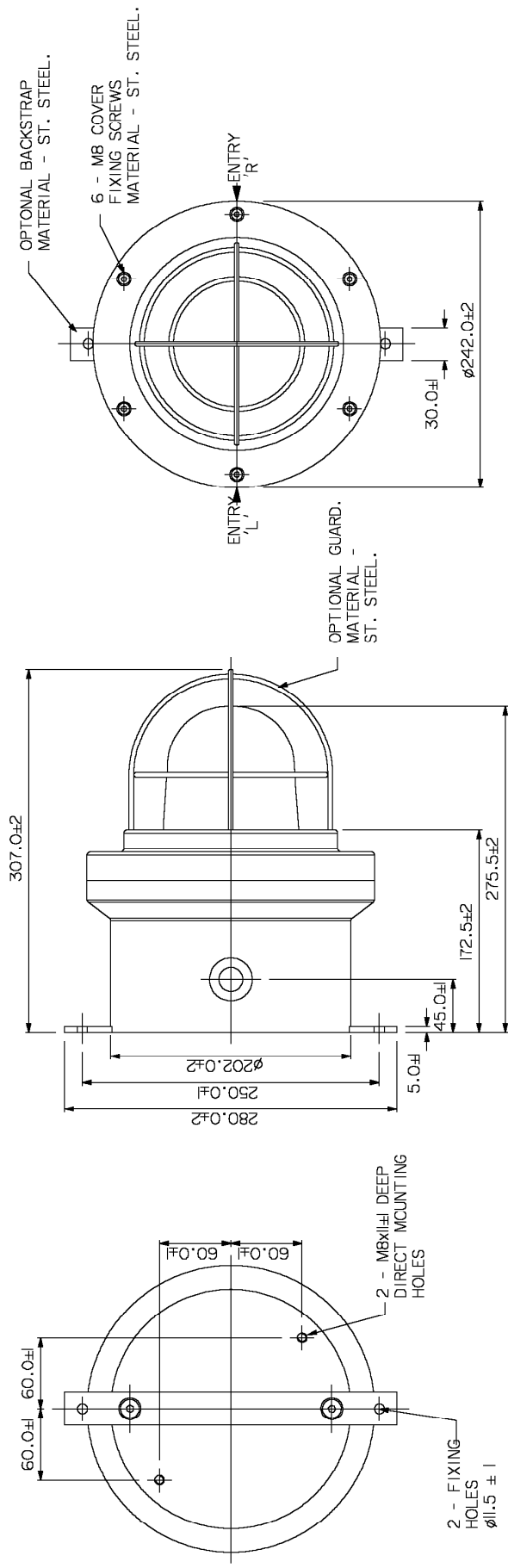
4/ ENCLOSURE & COVER MATERIAL - GLASS REINFORCED POLYESTER.

5/ OPTIONAL DUTY/ TAG LABEL, LETTER SIZE 5mm MAX.


6/ TERMINALS SUITABLE FOR UPTO 6 WAY, 690V 4/A 6.0mm SQ MAX.

7/ CABLE ENTRIES 2 x M20 x 1.5p MAX ■ POSITIONS 'L' AND 'R'.



8/ HYLOMAR PL32 SEALANT APPLIED TO ALL CERTIFIED BLANKING PLUGS.



DESIGNERS & MANUFACTURERS
OF ELECTRICAL & ELECTRONIC
EQUIPMENT & SYSTEMS FOR
HAZARDOUS AREAS



MEDC, Colliery Road, Pinxton,
Nottingham NG16 6JF, U.K.
Tel: +44 (0)1773 812249
fax: +44 (0)1773 580282

ISSUES	<div>ALL DIMENSIONS ARE IN MILLIMETRES UNLESS OTHERWISE STATED</div> <div>REMOVE ALL BURRS AND SHARP EDGES</div> <div>MACHINE SYMBOLS  THIS </div>	<div>THIS DRAWING IS CONFIDENTIAL AND IS THE PROPERTY OF MEDC AND MUST NOT BE REPRODUCED EITHER WHOLLY OR PARTLY. ALL RIGHTS IN RESPECT OF PATENTS, DESIGNS AND COPYRIGHT ARE RESERVED.</div>	DRAWN BY:	DATE:	TITLE FB12 STEADY BEACON CUSTOMER G.A			
			M.SELDEN	14/05/01				
			CHECKED BY:	DATE:				
			D. HAGIN	14/05/01				
			APPROVED BY:	DATE:				
M.SELDEN	14/05/01							
SCALE: N.T.S.			SIZE	A4	DRG No.	226-210	ISSUE	A

DO NOT SCALE			
<div>CURRENT PRODUCTION COPY</div> <div><div>TBI</div><div><div><div>1</div><div>2</div><div>3</div><div>4</div><div>5</div><div>6</div></div><div><div>LIVE or +ve</div><div>NEUTRAL or -ve</div><div>SPARE</div></div></div><div><div>BROWN Vac / RED Vdc</div><div>BLUE Vac / BLACK Vdc</div></div><div>LHI</div><div>270</div><div>OPTIONAL LINK</div></div>		<div>CELL BOOK</div> <div>D</div>	
		<div>THIS DRAWING IS CONFIDENTIAL AND IS THE PROPERTY OF MEDC AND MUST NOT BE REPRODUCED EITHER WHOLLY OR PARTLY. ALL RIGHTS IN RESPECT OF PATENTS, DESIGNS AND COPYRIGHT ARE RESERVED</div> <div><div>ALL DIMENSIONS ARE IN MILLIMETRES UNLESS OTHERWISE STATED</div><div>REMOVE ALL BURRS AND SHARP CORNERS</div><div>MACHINE SYMBOLS THIS </div></div>	
<div>WIRING DIAGRAM</div> <div>FBI2 STEADY BEACON</div>		<div>DESIGNERS & MANUFACTURERS OF ELECTRICAL & ELECTRONIC EQUIPMENT & SYSTEMS FOR HAZARDOUS AREAS</div> <div>MEDC Ltd, Colliery Road, Pinxton Nottingham NG16 6JF, U.K. Tel: +44 (0)1773 864100 Fax: +44 (0)1773 582800 e-mail: info@medc.com web: www.medc.com</div>	
<div>ISSUES</div>		<div>DATE: 03/05/01</div> <div>DATE: 03/05/01</div> <div>DATE: 03/05/01</div> <div>SIZE: A4</div> <div>DRG No. 226-208</div> <div>ISSUE A</div>	