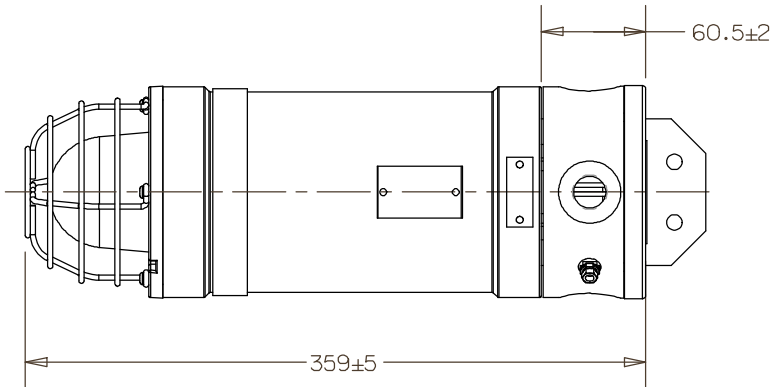
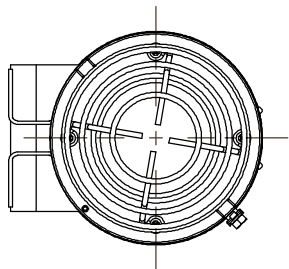
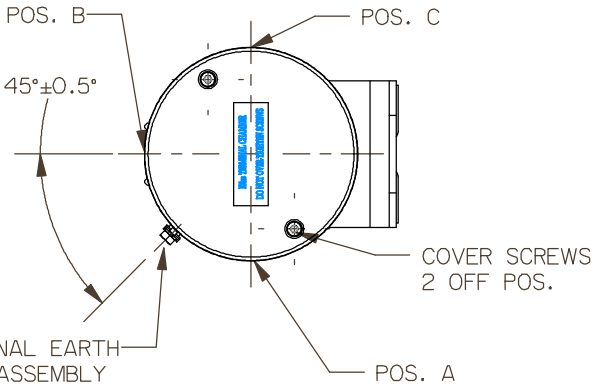


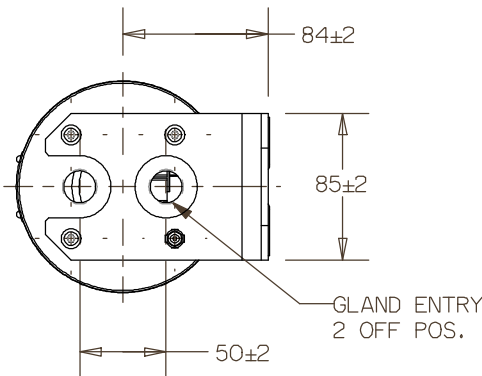
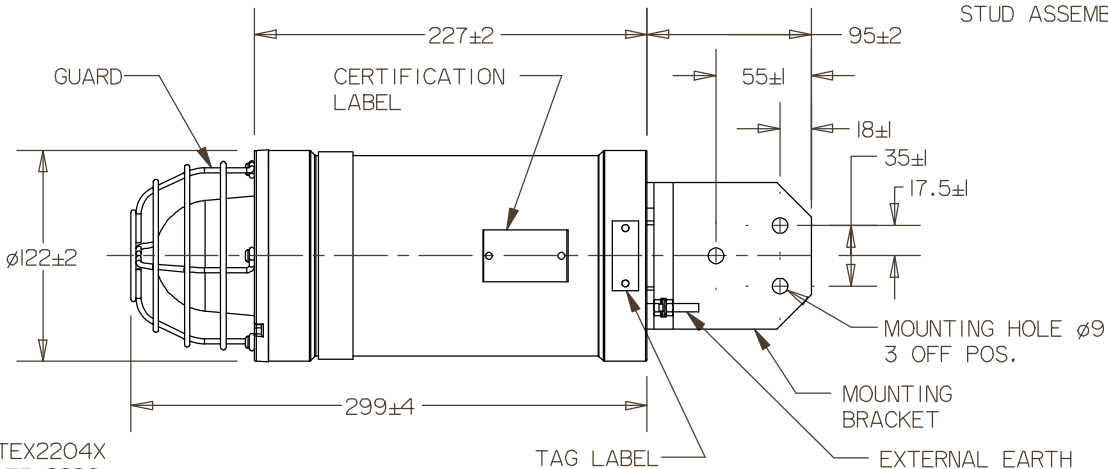
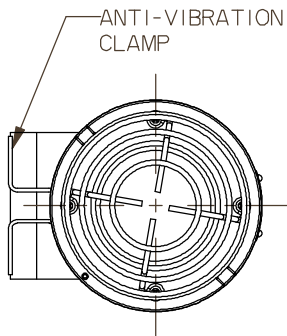
EExde VERSION



DO NOT SCALE



EExd VERSION



1. TYPE: 10J OR 15J XENON BEACON
2. ATEX APPROVED: 112G EExd 11B T4, BAS 00ATEX2204X
112G EExde 11B T4, BAS 00ATEX2226X
3. CERTIFIED TEMPERATURE:
15J UNIT: EExd -55°C TO +40°C
EExde -50°C TO +40°C
10J UNIT: EExd -55°C TO +55°C
EExde -50°C TO +45°C
4. WEIGHT: EExd 2.8 ± 0.2 kg, EExde 3.6 ± 0.2 kg
5. MATERIAL: BODY & COVER, GLASS REINFORCED POLYESTER LENS, GLASS
SCREWS & BRACKET, STAINLESS STEEL 316

6. TAG LABEL LETTER SIZE: 5 MAX.
7. TERMINALS: 4 x 2.5mm² (DC), 6 x 2.5mm² (AC)
8. CABLE ENTRIES: UP TO 2 x M20 (EExd), UP TO 3 x M20 (EExde)
9. OPTIONS: TELEPHONE INITIATE, EARTH CONTINUITY



MEDC Ltd, Colliery Road, Pinxton
Nottingham NG16 6JF, U.K.
Tel: +44 (0)1773 864100
Fax: +44 (0)1773 582800
e-mail: info@medc.com web: www.medc.com

DESIGNERS & MANUFACTURERS
OF ELECTRICAL & ELECTRONIC
EQUIPMENT & SYSTEMS FOR
HAZARDOUS AREAS

ISSUES	B. 30/03/05 PF	ALL DIMENSIONS ARE IN MILLIMETRES UNLESS OTHERWISE STATED	THIS DRAWING IS CONFIDENTIAL AND IS THE PROPERTY OF MEDC AND MUST NOT BE REPRODUCED EITHER WHOLLY OR PARTLY. ALL RIGHTS IN RESPECT OF PATENTS, DESIGNS AND COPYRIGHT ARE RESERVED	DRAWN BY: M.SELDEN	DATE: 17/01/01	TITLE STANDARD CUSTOMER GA XBIO	
		REMOVE ALL BURRS AND SHARP CORNERS		CHECKED BY: P.OATES	DATE: 17/01/01		
		MACHINE SYMBOLS THUS		APPROVED BY: M.SELDEN	DATE: 17/01/01		
				SCALE: 1:5	SIZE: A4	DRG No. 228-153	ISSUE B

DC VOLTAGE UNITS		AC VOLTAGE UNITS		DO NOT SCALE							
SUPPLY IN = TB3 LOOP OUT = TB2		SUPPLY IN = TB2 LOOP OUT = TB3									
TELEPHONE INITIATE		TELEPHONE INITIATE									
CELL BOOK		CURRENT PRODUCTION COPY									
D											
ISSUES		THIS DRAWING IS CONFIDENTIAL AND IS THE PROPERTY OF MEDC AND MUST NOT BE REPRODUCED EITHER WHOLLY OR PARTLY. ALL RIGHTS IN RESPECT OF PATENTS, DESIGNS AND COPYRIGHT ARE RESERVED		DRAWN BY: M.SELDEN CHECKED BY: P.OATES APPROVED BY: M.SELDEN SCALE: NTS		DATE: 12/03/01 DATE: 12/03/01 DATE: 12/03/01 SIZE: A4		TITLE WIRING DIAGRAM XBIO EExd XENON BEACON			
B. 05/04/01 MDS		ALL DIMENSIONS ARE IN MILLIMETRES UNLESS OTHERWISE STATED REMOVE ALL BURRS AND SHARP CORNERS MACHINE SYMBOLS THUS						MEDC Ltd, Colliery Road, Pinxton Nottingham NG16 6JF, U.K. Tel: +44 (0)1773 864100 Fax: +44 (0)1773 582800 e-mail: info@medc.com web: www.medc.com		DESIGNERS & MANUFACTURERS OF ELECTRICAL & ELECTRONIC EQUIPMENT & SYSTEMS FOR HAZARDOUS AREAS	
								DRG No. 228-157		ISSUE B	

