

WARNING
THIS DRAWING RELATES
TO A CERTIFIED PRODUCT.

NO MODIFICATIONS
PERMITTED WITHOUT
THE AUTHORISATION OF
THE TECHNICAL MANAGER

CURRENT

PRODUCTION COPY

NOTES:-

1/ FOR UNITS TO WORK INDEPENDENTLY REMOVE LINKS LK1 & LK2 IN XB11 UNIT.

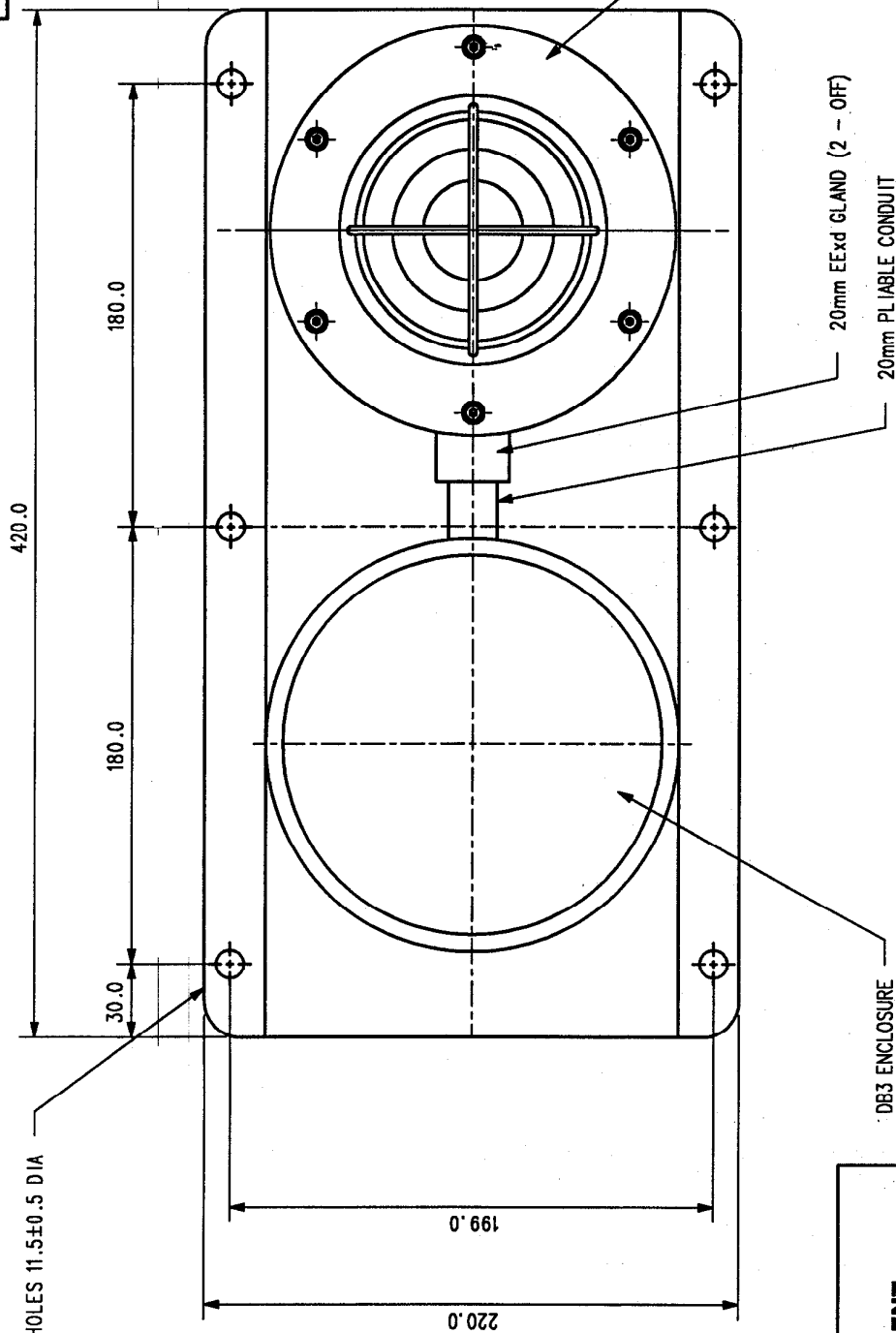
MEDC
MEDC, Colliery Road, Pinxton,
Nottingham NG16 6UF, U.K.
Tel: +44 (0)1773 812249
Fax: +44 (0)1773 580282

DESIGNERS & MANUFACTURERS
OF ELECTRICAL & ELECTRONIC
EQUIPMENT & SYSTEMS FOR
HAZARDOUS AREAS

ISSUES	B. 19-04-01 SH	ALL DIMENSIONS ARE IN MILLIMETRES UNLESS OTHERWISE STATED	THIS DRAWING IS CONFIDENTIAL AND IS THE PROPERTY OF MEDC AND MUST NOT BE REPRODUCED EITHER WHOLLY OR PARTLY. ALL RIGHTS IN RESPECT OF PATENTS, DESIGNS AND COPYRIGHT ARE RESERVED.	DRAWN BY: S. HUNT	DATE: 14-7-98	TITLE OVERALL WIRING DIAGRAM XB11 & DB3
	C. 17-12-01 SH			CHECKED BY: B. MALBON	DATE: 14-07-98	
				APPROVED BY: B. TAYLOR	DATE: 14-07-98	
				SCALE:	SIZE A3	
					DRG No. 225-123	



6 - HOLES 11.5±0.5 DIA

**WARNING**

THIS DRAWING RELATES
TO A CERTIFIED PRODUCT.
NO MODIFICATIONS
PERMITTED WITHOUT
THE AUTHORISATION OF
THE TECHNICAL MANAGER

CURRENT**PRODUCTION COPY**

MEDC, Colliery Road, Pinxton,
Nottingham NG16 6JF, U.K.
Tel: +44 (0)1773 812249
Fax: +44 (0)1773 590282

DESIGNERS & MANUFACTURERS
OF ELECTRICAL & ELECTRONIC
EQUIPMENT & SYSTEMS FOR
HAZARDOUS AREAS

ALL DIMENSIONS ARE
IN MILLIMETRES UNLESS
OTHERWISE STATED

**REWORK ALL DIMENSIONS
AND SHIP DIMENSIONS**

MACHINE
SYMBOLS THIS

THIS DRAWING IS CONFIDENTIAL
AND IS THE PROPERTY OF MEDC
AND MUST NOT BE REPRODUCED
EITHER WHOLLY OR PARTLY.
ALL RIGHTS IN RESPECT OF
PATENTS, DESIGNS AND
COPYRIGHT ARE RESERVED.

DRAWN BY: S. HUNT
CHECKED BY: B. WALBON
APPROVED BY: B. TAYLOR
SCALE: A3

DATE: 14-07-98
DATE: 14-07-98
DATE: 14-07-98

TITLE
0/ALL GENERAL ARRANGEMENT
XB11 & DB3

DRG No.

225-122

ISSUE

A