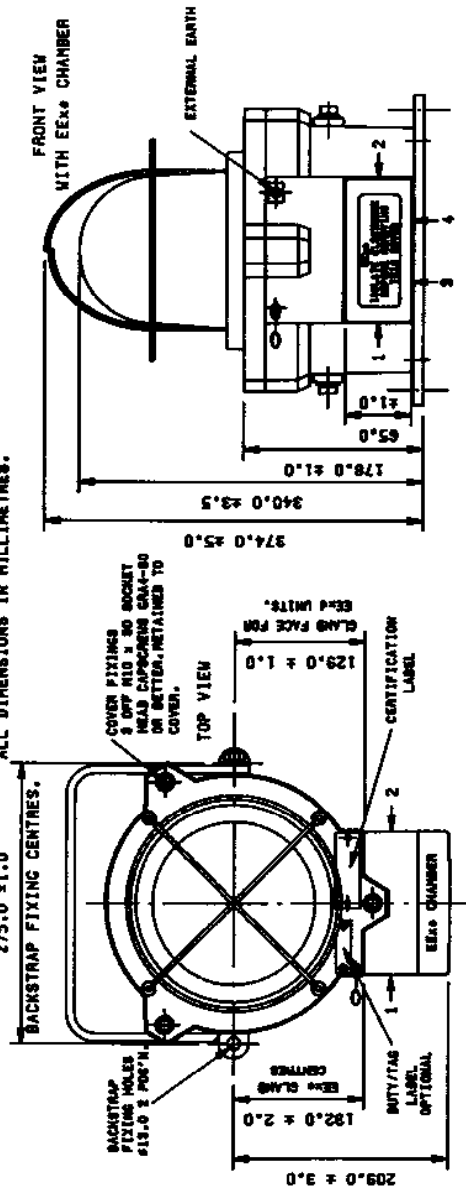




DO NOT SCALE

ALL DIMENSIONS IN MILLIMETRES.



1. TYPE: H55, H55, F55, F55, T55 & X55.

2. CERTIFICATION No. BASEEFA EXERC1988

WEIGHTS:-	UNIT TYPE WEIGHT 20.2 KG
H55	12.5
H55	12.5
F55	12.5
F55	12.5
T55	12.5
T55	12.5
X55	12.5
X55	12.5

ADD 15g TO THE ABOVE WEIGHTS FOR EE* CHAMBER.

4. TAG/FUNCTION LABEL LETTER SIZE 5mm MAX.

5. CERT. LABEL LETTER SIZE 5mm MAX.

6. LABEL MATERIAL:- ST. STEEL.

7. TERMINALS:-

EE* CHAMBER 8 x 10mm Ø, MAX.

EE* CHAMBER 8 x 8mm Ø, MAX.

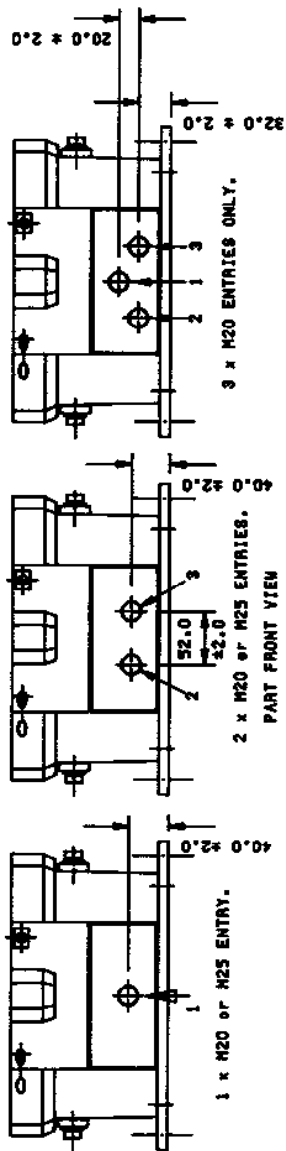
8. CABLE ENTRIES:-

EE* CHAMBER 2 x M25 or 2 x M20 MAX.

EE* CHAMBER 4 x M25 or 4 x M20 MAX.

EE* CHAMBER TO BE SEALED WITH SUITABLE WADERS.

EE* CHAMBER TO BE SEALED WITH A SUITABLE SEALANT.



MEDC, Colliery Road, Pinxton,
Nottingham NG16 6JF, U.K.
Tel. Ripley (0773) 812249
Fax: (0773) 580282

ISSUES											
WELDING TERMS & SYMBOLS TO BS 486 PART 2				MACHINE SYMBOLS THUS ∇ μ m		THIS DRAWING IS CONFIDENTIAL AND IS THE PROPERTY OF MEDC AND MUST NOT BE REPRODUCED EITHER WHOLLY OR PARTLY ALL RIGHTS IN THIS DRAWING ARE RESERVED		DRN. AC 21/44		TITLE GENERAL ARRANGEMENT MFS, HSS, FBS, FL5, TH5 & XBS	
CARBON STEEL TO BE WELDED IN ACCORDANCE WITH BS 5135				REMOVE ALL BURRS AND SHARP EDGES				CHD ∇ μ m			
STAINLESS STEEL TO BE WELDED IN ACCORDANCE WITH BS 3019 PT 2 - 1990				TOLERANCES				APD ∇ μ m			
WELDS TO BE FREE FROM SLAG & SPLATTER				GEN. ∇ μ m				SCALE			
				± 0.5		± 0.3		METRIC DIMENSIONS ONLY (U.S.)		SIZE A4	
										DRG NO 2/000/01/01.	
										ISSUE A	