

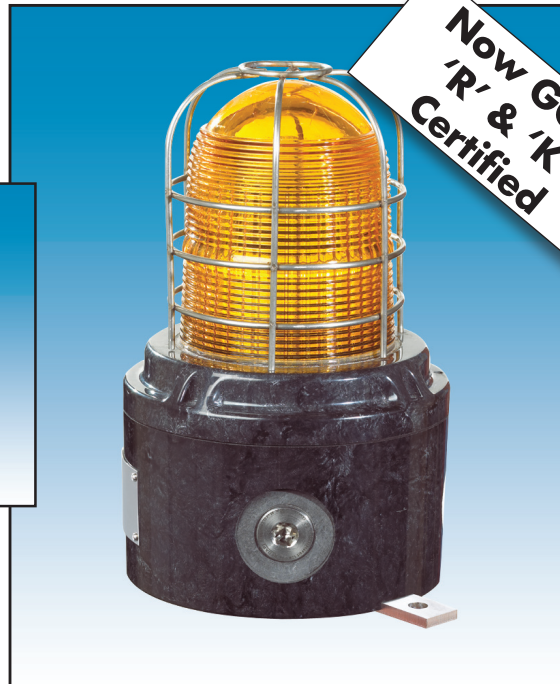
15 JOULE XENON BEACONS

EExd, Weatherproof

XB15 Range



XB15
Pipe Mount
Note: UL only
(with cast guard)



XB15 Direct Mount (with backstrap and wire guard)

Now GOST
'R' & 'K'
Certified

Introduction

These certified beacons have been designed for use in potentially explosive atmospheres and harsh environmental conditions. The enclosures are suitable for use offshore or onshore, where light weight combined with corrosion resistance is required.

The housings are manufactured completely from a U.V. stable, glass reinforced polyester. Stainless steel screws and mounting bracket are available ensuring a totally corrosion-free product.

The model XB15 contains a supervisory diode and four wire lead connections for alarm applications.

Units can be painted to customer specification and supplied with identification labels.

- ★ Zone 1 and Zone 2 use.
- ★ EExd IIC, T4/T5/T6.
- ★ ATEX approved, Ex II 2GD.
- ★ UL listed for USA and Canada
 - Hazardous locations:
 - Class I, Div. 2, Groups A, B, C & D.
 - Class II, Div 2 Groups F & G
 - Class I, Zone 1, AExd IIC T4/T5/T6.
 - Ordinary locations: Visual-Signal Device.
 - Marine listed.
- ★ GOST 'R' & 'K' Certified.
- ★ Brazilian (Inmetro) Certified.
- ★ IEC-Ex Approved.
- ★ IP66 & 67.
- ★ Certified temperature -55°C to +70°C.
- ★ Pipe mount or direct mount enclosure.
- ★ Corrosion-free GRP.
- ★ Four wires and supervisory diode.
- ★ Optional stainless steel backstrap.
- ★ Various lens colours.
- ★ Optional relay or telephone initiate.
- ★ Optional cast or wire lens guard.
- ★ Up to 3 x M20 or 3 x M25 entries.
- ★ Filament version available (100W max).
- See data sheet for FB15.

Cooper MEDC Ltd, Colliery Road,
Pinxton, Nottingham NG16 6JF, UK.
Tel: +44 (0)1773 864100
Fax: +44 (0)1773 582800

Cooper MEDC (USA) 3413 North Sam Houston Parkway,
West, Houston, Texas 77086, USA.
Tel: +1 (713) 937 9772
Fax: +1 (713) 937 9773

Sales Enq. Fax: +44 (0)1773 582830 Sales Orders Fax: +44 (0)1773 582832
E-Mail: medc.sales@cooperindustries.com Web: www.medc.com



Specification

Certification: CENELEC EN50014 & EN50018.

ATEX Cert. No. Baseefa 04ATEX0009X. BASEEFA EExd IIC T4/T5.

UL Listed for USA and Canada:

– Hazardous locations

Class I, Div 2, Groups A, B, C & D.

Class II, Div 2 Groups F & G

Class 1, Zone 1, AExd IIC T4/T5/T6.

UL listing No. E187894.

– Ordinary locations: Visual Signal Device.

– Marine Listed

UL listing No. S8128

GOST 'R' Certification: 1 Exd IIC T4/T5

Russian Fire alarm (VNIPO) approved

GOST 'K' Certification: Exd IIC T4/T5

Brazilian (Inmetro) Certified: BR-Ex d IIC T3/T4/T5/T6

IEC-ex Approved

Material: Body: Glass reinforced polyester.
Lens: Glass.
Backstrap: stainless steel 316.
Wire Guard (optional): Stainless steel wire.
Cast Guard (optional): Aluminium LM25M.

Finish: Natural black or epoxy painted to customer specification.

Models: XB15 ATEX – Available in direct mount version only.
XB15 UL – Available in pipe and direct mount versions.

Voltage: 24, 48V d.c.
110, 120, 230, 240, 254V a.c.

Tube Energy: 15 Joules.

Tube Life: >1 x 10⁶ flashes.

Flash Rate: 60, 80, 120 fpm.

Certified -55°C to +40°C (T6).

Temperature: -55°C to +55°C (T5).

-55°C to +70°C (T4).

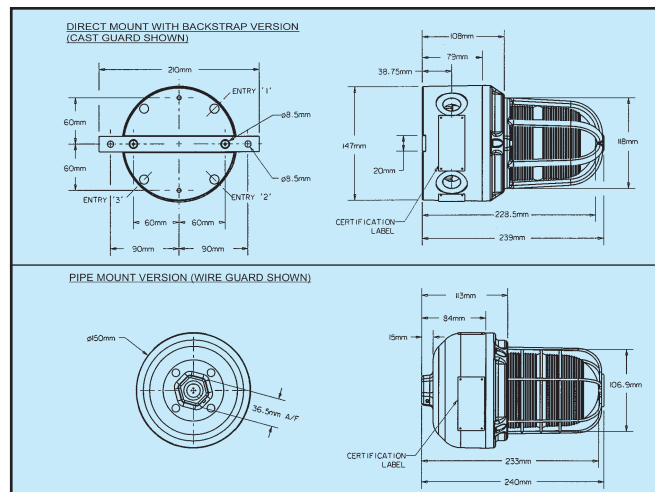
Weight: Pipe mount: 2.6kg; Direct mount: 3.0kg.

Ingress Protection: IP66 & IP67.

Entries: ATEX version: Supplied as 2 x M20 entries as standard
– Up to 3 x M20 or 3 x M25 entries. Contact sales office to order.
UL version: Supplied as 2 x ¾" NPT (direct mount) or ¾" (pipe mount) as standard.
Other options available:
Up to 3 x ½" NPT or 3 x ¾" NPT (direct mount);
½" NPT (pipe mount) – contact sales office to order.

Terminals: Direct mount: 12 x 2.5mm².

Pipe mount: 8 x 2.5mm².



Relay Initiate: Available on all versions - operates with 24V d.c. initiate supplies only.

Labels: Tag/Duty label option.

Electrical Ratings:

	d.c		a.c				
Voltage	24	48	110	120	230	240	254
Current (A)	0.99	0.73	0.4	0.4	0.2	0.2	0.17
Effective Candlepower (Cd) – 330 at 60 flashes per min.							
Peak Candlepower	– 520,000 (Peak candlepower is the maximum light intensity generated by a flashing light during its light pulse)						

Multiplying Factor for Coloured Lenses:

Red	Blue	Amber	Green	Yellow
0.15	0.12	0.51	0.49	0.86

Ordering Requirements

The following code is designed to help in the selection of the correct unit. Build up the reference number by inserting the code for each component into the appropriate box. **Standard products available for immediate shipping – contact sales office for details.**

Model	Certification	Voltage	Lens Flashrate	Lens Color	Unit Guard	Fixing	Options	Finish
XB15								

Certification	Code	Voltage	Code	Fpm	Code	Guard	Code	Option	Code
ATEX	B	24V d.c.	024	60	06	None	N	None	N
UL	UL	48V d.c.	048	80	08	Cast	C	Tag label	T
UL (ordinary location)	UW	110V a.c.	110	120	12	Wire	W	Duty label	D
UL Marine	U	120V a.c.	120					Relay initiate*	R
GOST 'R'*	G	230V a.c.	230					Telephone initiate†	I
GOST 'K'	K	240V a.c.	240					Blanking Plug	P
Inmetro	DM	254Va.c.	254						
IEC Ex	J								

Color	Code	Unit Fixing	Code	Finish	Code
Red	R	Pipe mount	P*†	Natural Black	N
Blue	B	Direct mount	D†	Red	R
Green	G	Direct w/backstrap	B†	Blue	B
Amber	A			Yellow	Y
Yellow	Y			Green	G
Clear	C			White	W
				Special Finish	S

*VNIPO approved as standard.

*Suitable for 24V d.c. supplies only.
†Not available on UL/ UW versions.

*Only available on UL Listings.
†Contact MEDC if ½" NPT is required.

All the above specifications, dimensions, weights and tolerances are nominal (typical) and MEDC reserve the right to vary all data without prior notice. No liability is accepted for any consequence of use.

