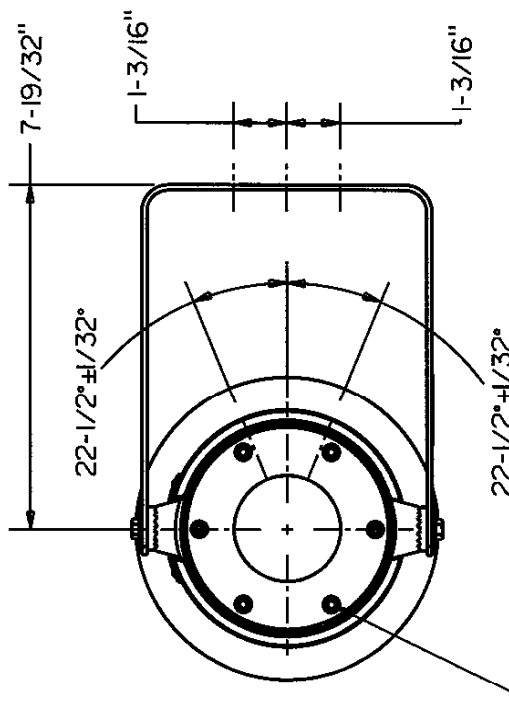


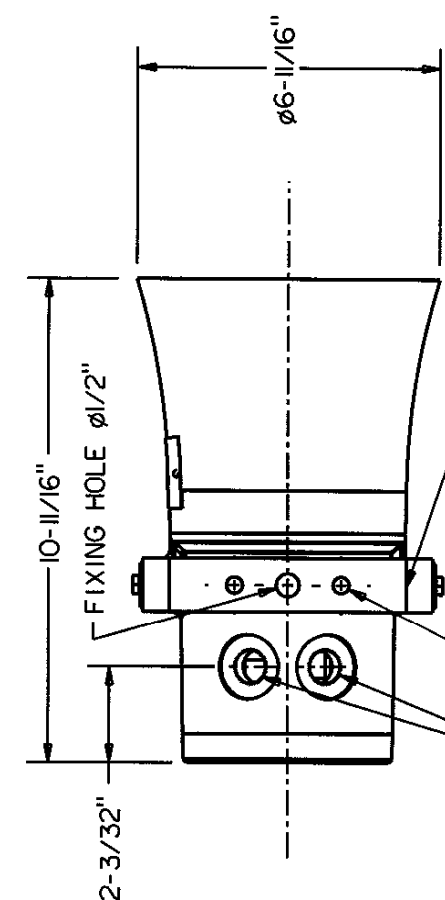
DO NOT SCALE



1. TYPE: DB3
2. UL LISTING NO. E203310, CLASS I, DIV. 2 GROUPS A,B,C,D  
AMBIENT TEMP. -67°F TO +131°F
3. WEIGHT:- 8.8 LBS APPROX.
4. MATERIAL:- GLASS REINFORCED POLYESTER
5. IDENTITY/ TAG LABELS LETTER SIZE 3/16" MAX
6. TERMINALS SUITABLE FOR UP TO 14 AWG
7. UP TO 2 OFF 1/2" NPT ENTRIES AVAILABLE
8. UL LISTED SEALANT TO BE APPLIED TO ALL GLANDS  
& BLANKING PLUGS
9. GENERAL TOLERANCE  $\pm 3/32$ "



6 OFF STAINLESS STEEL  
CAPTIVE COVER SCREWS



2 OFF GLAND ENTRIES MAX  
1-3/16"

2 OFF POS.  
2 OFF GLAND ENTRIES MAX

STAINLESS STEEL  
SWIVEL BRACKET WITH  
INTEGRAL RATCHET FACILITY

**MEDC**  
MEDC, Colliery Road, Plympton, Devon, U.K.  
Tel: +44 (0)1773 812249  
Fax: +44 (0)1773 580282  
DESIGNERS & MANUFACTURERS  
OF ELECTRICAL & ELECTRONIC  
EQUIPMENT & SYSTEMS FOR  
HAZARDOUS AREAS

ISSUES		TITLE		DRG No.		ISSUE	
<div>ALL DIMENSIONS ARE IN MILLIMETRES UNLESS OTHERWISE STATED</div> <div>REMOVE ALL BURRS AND SHARP CORNERS</div> <div>MACHINE SYMBOLS THUS </div>		DRAWN BY:	DATE:	CUSTOMER GA		A	
		M.SELDEN	14/08/00	DB3 & DB3L		219-274	
		CHECKED BY:	DATE:	SOUNDERS			
		G.HODGKINSON	14/08/00				
		APPROVED BY:	DATE:				
		M.SELDEN	14/08/00				
		SCALE:	NTS	SIZE: A4			
		THIS DRAWING IS CONFIDENTIAL AND IS THE PROPERTY OF MEDC AND MUST NOT BE REPRODUCED EITHER WHOLLY OR PARTLY. ALL RIGHTS IN RESPECT OF PATENTS, DESIGNS AND COPYRIGHT ARE RESERVED					