



INTEC AUTOMATIZARI: Sisteme industriale de incalzire pt zone Ex

FCR Hazardous Area Convector Heaters:

The heavy duty folded steel construction and the finned stainless steel elements give the FCR range an exceptional long life. The FCR range is certified for use in Hazardous Areas where the flammable atmosphere is a IIA, IIB or IIC Gas Group.



Features	Typical Applications
Certified to meet the ATEX Directive 94/9/EC and IECEx Small footprint, occupying less floor space Sloped top, preventing objects being placed on the grill Floor or wall mounting Integral terminal enclosure Suitable for ambient temperatures from -60°C to +60°C Stainless steel finned elements for long life Grey gloss, powder coated, sheet steel construction Optional built on room temperature control thermostat	Aircraft hangers Fuel servicing areas Chemical plants Offshore installations Battery stores Gas installations

Technical Data

Certification ATEX certified Ex II 2 G IECEx & ATEX certified Ex'e' IIC T2 to T4

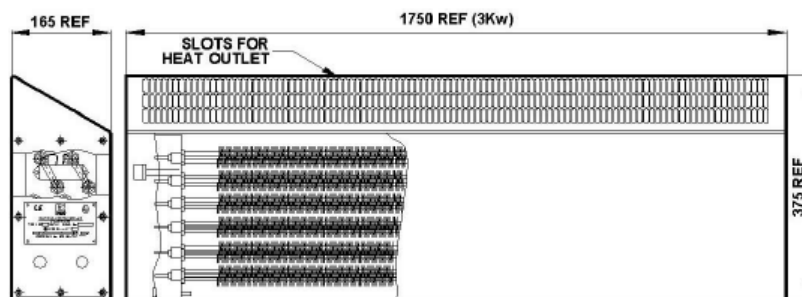
Enclosure Heavy duty folded steel

Elements Individually replaceable, finned heating elements, comprising high quality 80/20 nickel chrome resistance wire, compacted in magnesium oxide insulating powder and encased in an Incoloy sheath

Controls If required the heaters can be controlled from the EXHEAT® range of **remote mounted thermostats** available for use in Safe or Hazardous Areas

Mounting Wall or floor mounting via brackets/feet supplied

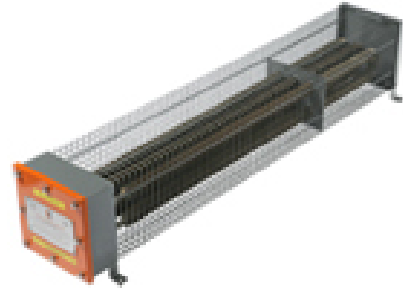
Rating Up to 3kW **Voltage** 1 phase: 110V or 230V 3 phase: 415V



Model	Output (kW)	Voltage	Weight (kg)
FCR 1	1.0	240	17
FCR 1/110	1.0	110	17
FCR 2	2.0	240	32
FCR 2/110	2.0	110	32
FCR 3	3.0	240	47
FCR 3/415	3.0	415/3 Phase	47



FAW Hazardous Area Air Warmers range offers a versatile lightweight air warming solution for small work and storage areas located in Zone 1 and Zone 2 Hazardous Areas. The range is suitable for use with 1 phase or 3 phase power supplies up to 440 volts. The range can also be configured for use with DC power supplies.



Features	Typical Applications
Certified to meet the requirements of the ATEX Directive 94/9/EC and IECEx Lightweight enclosure certified weatherproof to IP66 Suitable for 1 phase or 3 phase (3 or 4 wire) or DC power supplies Temperature classes T2, T3, and T4 available Suitable for floor or wall mounting A 20mm cable entry is provided as standard, add entries can be provided as required Powder coated finish Optional range of Flameproof room thermostats can also be provided Suitable for ambient temperatures from -60°C to +60°C (subject to conditions to be discussed with sales engineer)	Aircraft hangers Fuel servicing areas Chemical plants Offshore installations Battery stores Gas installations Paint/solvent stores

Certification ATEX certified Ex II 2 G IECEx & ATEX certified Ex'e' II T2 to T4

Enclosure Lightweight stainless steel or coated mild steel

Controls If required the heaters can be controlled from the EXHEAT® range of **remote mounted thermostats** available for use in Safe or Hazardous Areas

Mounting Support feet are pre-drilled and suitable for floor mounting supplied as standard (wall mounting brackets available on request)

Rating 250W to 3kW **Voltage** 1 phase: 230 to 254V or 110V 3 phase: 400 to 440V

Model	T' Class	Rating Watts	Voltage	Supports	Dimensions			Weight (kg)
					A	B	C	
Compact Range								
FAW-C-250	T2/T3	250	254 or 110	2	350	160	282	5
FAW-C-500	T2/T3	500	254 or 110	2	350	160	282	6
FAW-C-750	T2/T3	750	254 or 110	2	615	160	545	6
FAW-C-1000	T2/T3	1000	254 or 110	2	615	160	545	9
Standard Range								
FAW250	T2/T3	250	254	2	971	160	860	8
FAW500	T2/T3	500	254 or 110	2	971	160	860	10
FAW750	T2/T3	750	254/440 OR 110	2	971	160	860	12
FAW1000	T2/T3	1000	254/440 OR 110	2	1221	160	1120	14
FAW1500	T2/T3	1500	254/440 OR 110	3	1741	160	1640	20
FAW2000	T2/T3	2000	254 or 110	3	1741	272	1640	32
FAW2500	T2/T3	2500	254	3	1741	272	1640	38
FAW3000	T2/T3	3000	254/440	3	1741	272	1640	42
FAW250	T4	250	254	3	1886	160	1784	13
FAW500	T4	500	254	3	1886	160	1784	17
FAW750	T4	750	254/440	3	1886	160	1784	21
FAW1000	T4	1000	254	3	1886	272	1784	33
FAW1250	T4	1250	254	3	1886	272	1784	38
FAW1500	T4	1500	254/440	3	1886	272	1784	42



FLR Flameproof Liquid Filled Radiators range of liquid filled electrically heated radiators has been specifically designed to provide heating in Zones 1 and 2 or Zone 21 and 22 Hazardous Areas where airborne dust particles are of particular concern. Our 'FLR-A' range comes complete with an externally adjustable control thermostat.



<u>Features</u>	<u>Typical Applications</u>
Certified to meet the ATEX Directive 94/9/EC Surface temperature limited to meet EN 563 safety requirements Integral preset surface temperature control thermostat Temperature class T6 Long life Incoloy 825 sheathed rod-type element Radiator filled with water/glycol mix Suitable for ambient temperatures from -20°C to +40°C Certified weatherproof to IP66 Manual reset over-temperature cut-out fitted to ensure radiator surface temperature never exceeds 80°C Optional externally adjustable control thermostat	Ammunition depots Explosive stores Chemical plant warehouses Firework factories Sugar refineries Laboratories

Technical Data

Certification ATEX certified ⒺII 2 G/D Ex'd' IIC T6 Ex tD A21 IP6X T85°C

Enclosure Cast aluminum finished in orange/grey
 coated finish

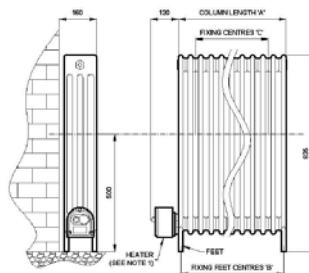
Radiator Pressed steel with white powder

Element Rod-type, comprising high quality 80/20 nickel chrome resistance wire, compacted in magnesium oxide insulating powder and encased in corrosion resistant Incoloy 825 metal sheath

Controls Preset radiator surface temperature control thermostat and manual reset safety temperature limiter (optional externally adjustable control thermostat)

Mounting Floor standing with welded-on feet and wall retention brackets

Rating Standard heater ratings 1kW, 2kW and 3kW **Voltage** 230V single phase



Model	Rating KW	Dimensions (mm)			Weight (kg)
		A	B	C	
FLR1	1	540	495	360	47
FLR2	2	1080	1035	900	94
FLR3	3	1620	1575	1440	140



FWD-T Adjustable Air Warmers range with an easy to adjust external thermostat which is designed for heating small work or storage areas and similar applications, located in Zone 1 and 2 or Zone 21 and 22 Hazardous Areas where the flammable atmosphere is a IIA, IIB or IIC Gas Group.



Features

Certified to meet the ATEX Directive 94/9/EC and IECEx
 Weatherproof to IP66/67
 Suitable for 110V or 230/254V supplies
 Temperature classes T2, T3 and T4 available
 Corrosion resistant powder coated finish
 Suitable for floor or wall mounting
 2 x 25mm (plugged) cable entries provided as standard
 Rotatable terminal box
 Externally adjustable 0-40°C room temperature controlled thermostat
 Suitable for ambient temperatures from -60°C to +60°C (subject to conditions to be discussed with sales engineer)
 Individually replaceable heating elements

Typical Applications

Aircraft hanger service bays
 Fuel servicing areas
 Chemical plants
 Offshore installations
 Battery stores
 Gas installations
 Containers
 Crane cabs
 Paint/solvent stores

Technical Data

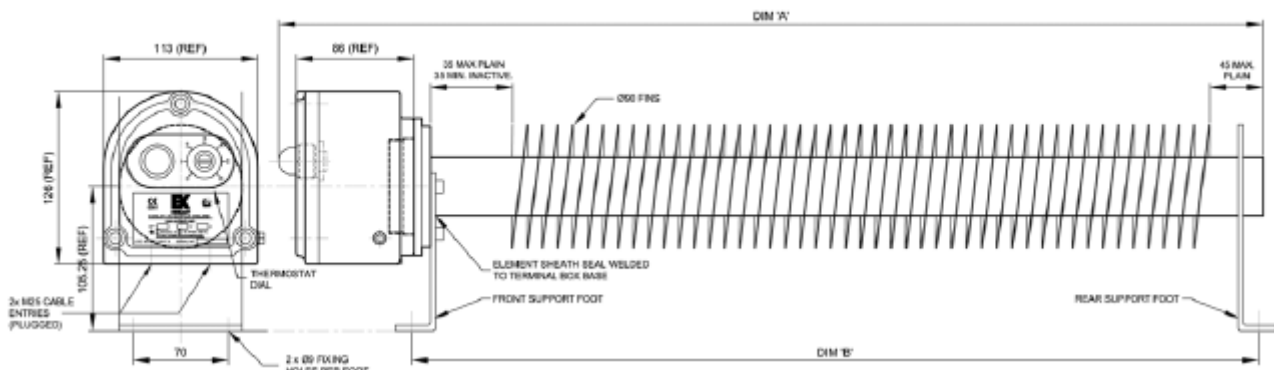
Rating 500W to 2kW **Voltage** 1 phase 230/254V or 110V

Certification ATEX certified Ex'II 2 G/DIECEX & Ex'd' IIC T2 to T4 Ex tD A21 IP66 T300°C to T135°C

Enclosure Aluminium powder coated orange/grey

Controls Externally adjustable 0-40°C room temperature controlled thermostat

Mounting Pre-drilled support feet supplied as standard



Model	T' Class	Rating Watts	Dimensions		Weight (kg)
			'A'	'B'	
FWDT-500-T3	3	500	800	670	9
FWDT-1000-T3	3	1000	1300	1170	12
FWDT-1500-T3 (230V)	3	1500	1900	1770	17
FWDT-2000-T3 (230V)	3	2000	2450	2320	20
FWDT-500-T4	4	500	1300	1170	12
FWDT-750-T4	4	750	1900	1770	17
FWDT-1000-T4	4	1000	2450	2320	20



HEF Hazardous Area Anti Condensation & Space Heaters The self-regulating properties of the HEF enclosure heaters eliminate the requirement for a thermostat. Coupled with the compact design, this makes the HEF ideal for anti condensation, frost protection and temperature control where the enclosure is located within Zone 1 and Zone 2 or Class 1, Div 2 Hazardous Areas. Certified to ATEX Directive 94/9/EC IECEx requirements, they are suitable for use where the flammable atmosphere is Group IIA, IIB or IIC Gas.



<u>Features</u>	<u>Typical Applications</u>
Certified to meet the requirements of the ATEX Directive 94/9/EC IECEx Compact, low profile, stainless steel case, requires minimal space Self-regulating - can be used without a thermostat Suitable for ambient temperatures from -60°C to +80°C Mounting of the heater can be in any orientation Design allows installation close to internal components and cables without fear of damage by overheating	Control / monitoring panels Instrumentation cabinets Condensation prevention Temperature fluctuations Frost protection

Technical Data

Certification ATEX certified II 2 G IECEx & ATEX certified Ex'e' T4

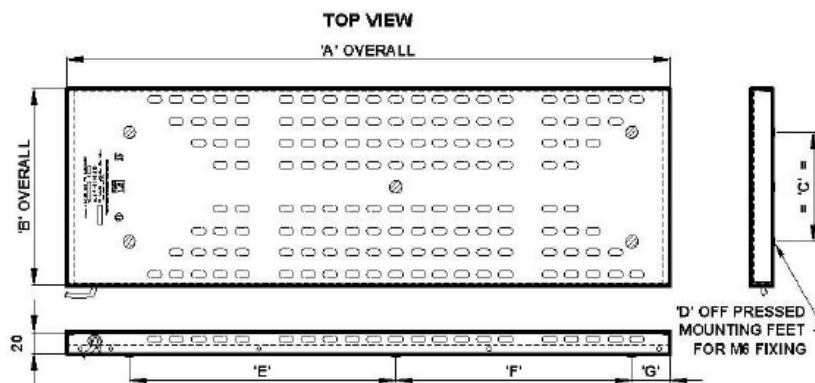
Casing Perforated stainless steel

Element Self-regulating

Controls The HEF is self-regulating, automatically reducing its output as the ambient temperature rises if overall enclosure temperature control is required it is recommended that the HEF heater is used in conjunction with one of the EXHEAT range of **Ex'd' thermostats**

Mounting The heater may be mounted in any orientation, using appropriate securing bolts through the mounting feet

Rating The HEF range is available in a nominal 30, 50, 100, 200 & 500W outputs, models available for 110V or 230V 1 phase supplies



Model	'A'	'B'	'C'	'D'	'E'	'F'	'G'
HEF30	130	73		Single Foot in Centre of Case Base			
HEF50	266	100	60	4	N/A	191	26
HEF100	290	181	158	4	N/A	191	35
HEF200	550	180	150	4	N/A	399	76
HEF500	700	340	238	4	N/A	589	56

Pentru oferte si informatii suplimentare ne puteti contacta telefonic sau prin e-mail la sales@intec-automatizari.ro.