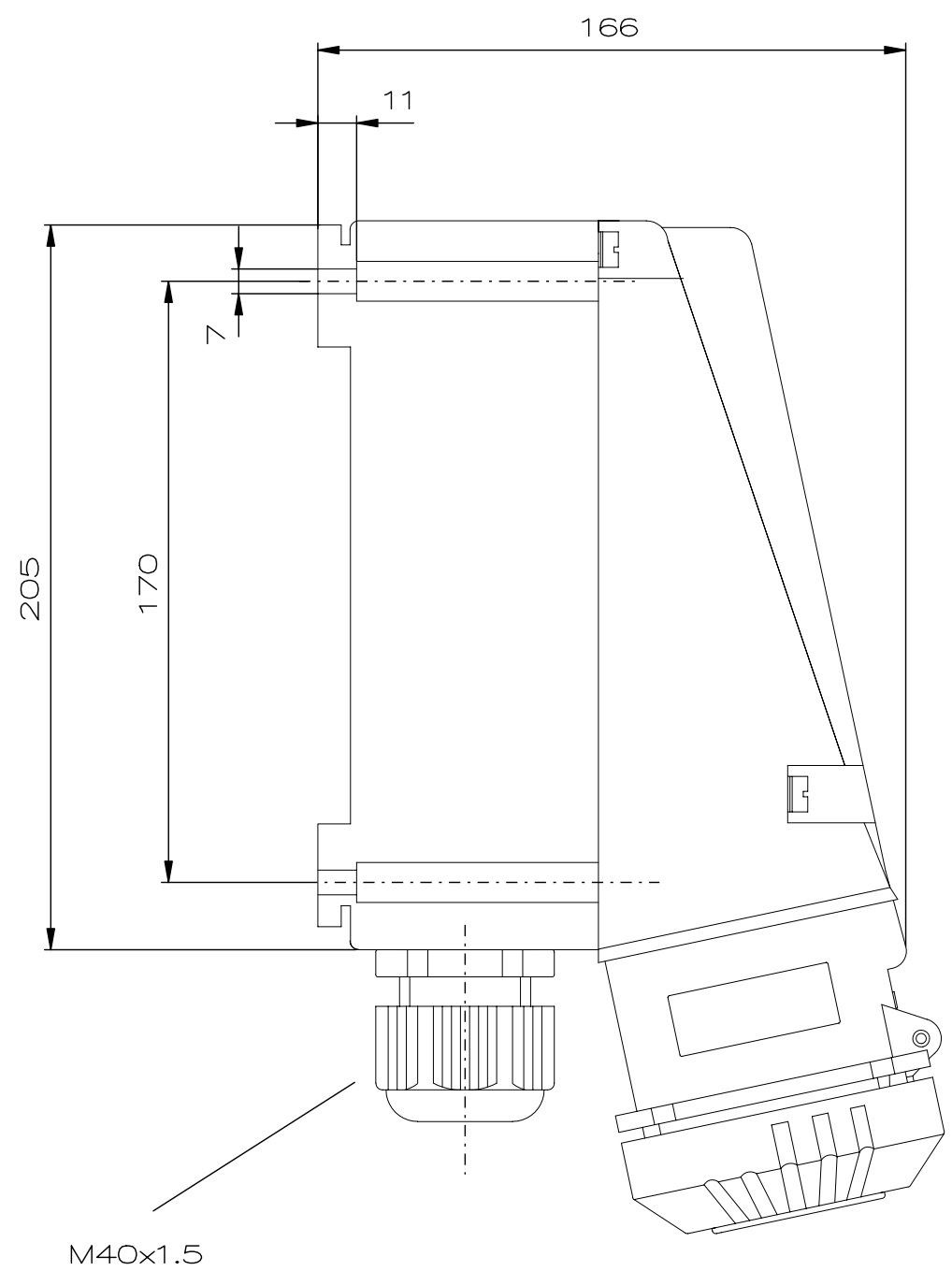
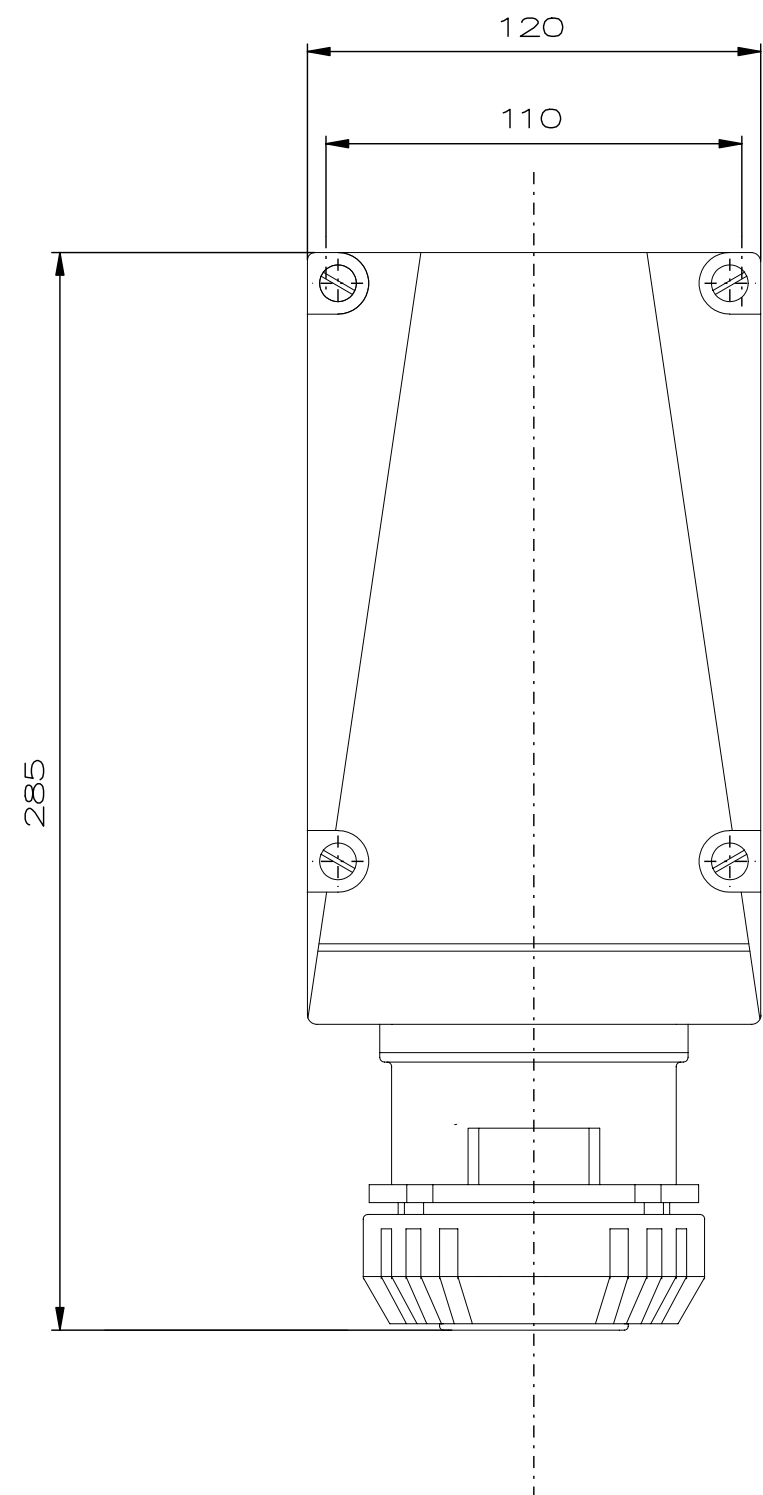




Designed with CAD-System ESP32



"Schutzvermerk nach DIN 34 beachten" / "Copyright reserved"

Description: Ex-Maintenance Wall Socket 32 A 380 – 415 V/5P
Beschreibung: Ex-Reparaturwandsteckdose 32 A 380 – 415 V/5P/KU



| | | | | | | | |
|---------------|--------------------|-------------|------------|--|--------------------|--------------------------------------|-----------------------------|
| | | | | | Date/ Datum | 30.09.2008 | Material-No./ Material-Nr.: |
| | | | | | Expert/ Bearbeiter | Röther | |
| Rev.st/ Zust. | Revision/ Änderung | Date/ Datum | Name/ Name | | 1:2 | Dimension unit: mm Maßeinheit: mm | GHG5124506R0901 |

1 2 3 4 5 6 7 8 4