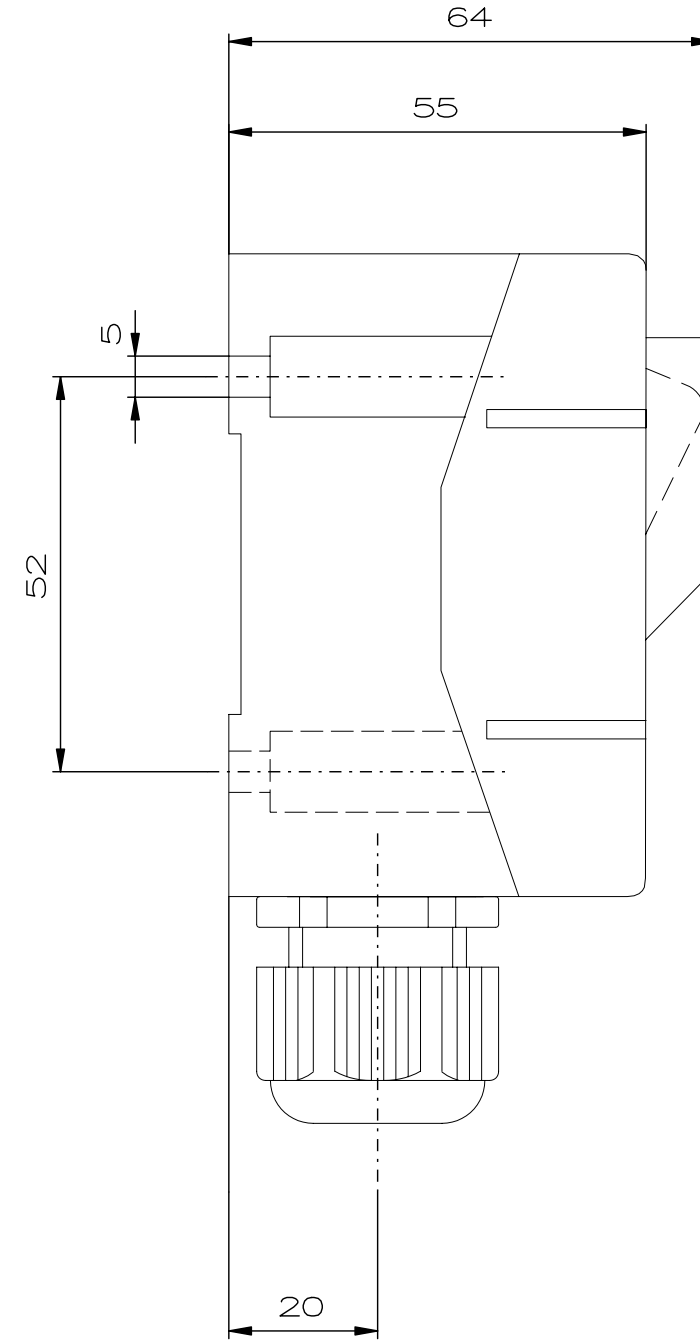
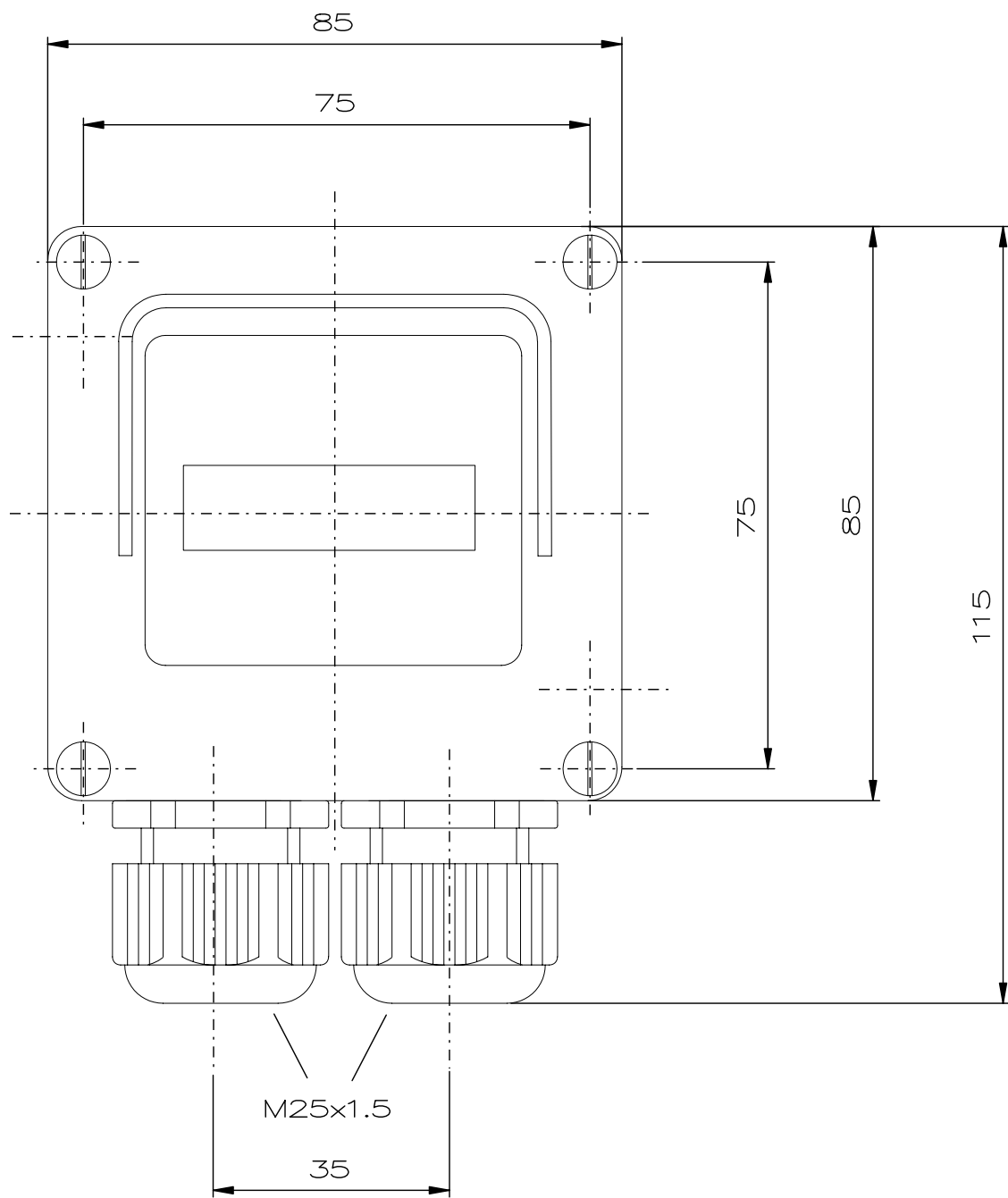




Designed with CAD-System ESP32



"Schutzvermerk nach DIN 34 beachten" / "Copyright reserved"

Description: Ex-Installation Switch pole switch 2-pole, 2 x M25
Beschreibung: Ex-Installationsschalter Ausschalter 2-polig, 2 x M25



Rev.st/ Zust.	Revision/ Änderung	Date/ Datum	Name/ Name

Date/ Datum	28:10:2008
Expert/ Bearbeiter	Röther
1:1	Dimension unit: mm Maßeinheit: mm

Material-No.: / Material-Nr.:	GHG2732000R0018
-------------------------------	-----------------

1 2 3 4 5 6 7 8 2