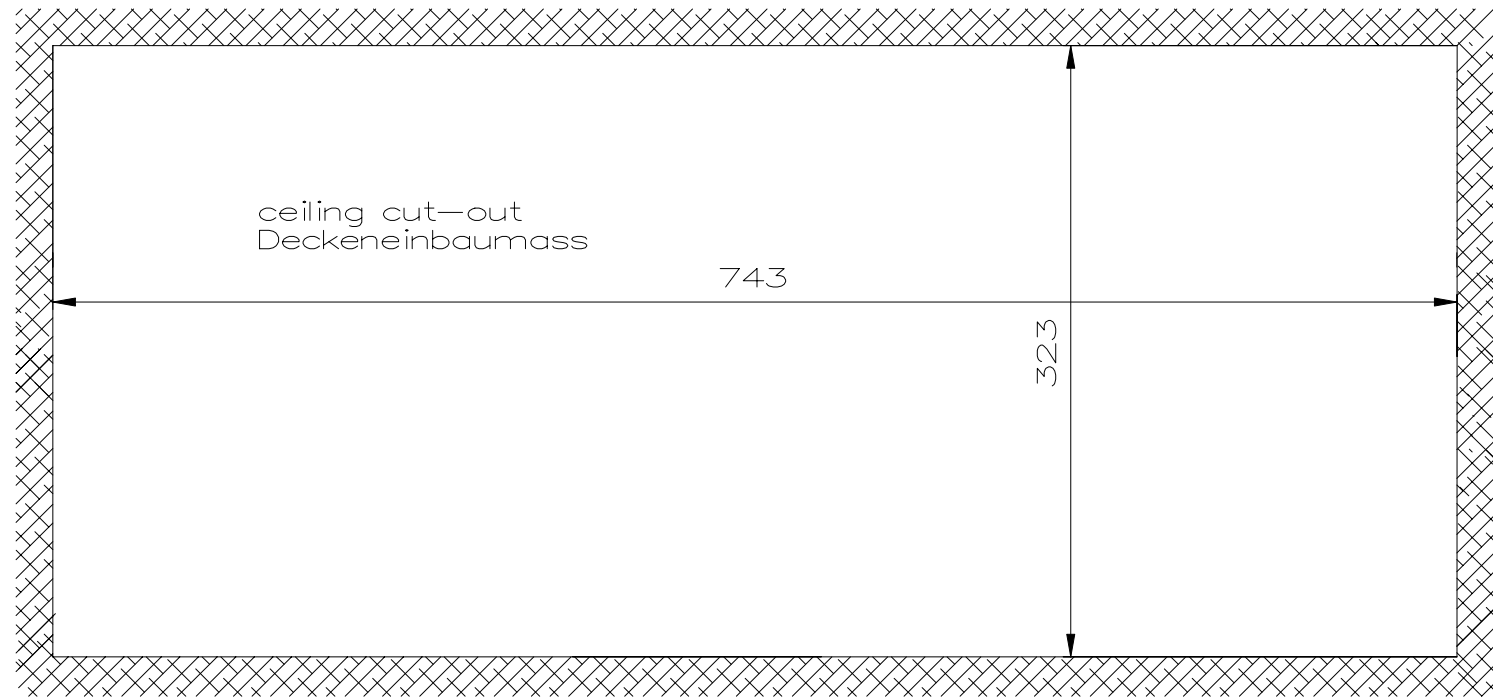
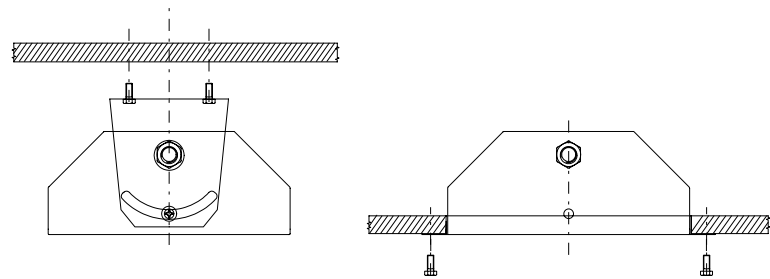


example for mounting
Einbaubeispiel



"Schutzvermerk nach DIN 34 beachten" / "Copyright reserved"

Description: Ex-recessed ceiling light fitting RLF 250 18/18 (2 x 18 W) 2/5-2K

Beschreibung: Ex-Deckeneinbauleuchte RLF 250 18/18 (2 x 18 W) 2/5-2K



					Date/ Datum	14.07.2008	Material-No./ Material-Nr.:
					Expert/ Bearbeiter	Röther	
Rev.st/ Zust.	Revision/ Änderung	Date/ Datum	Name/ Name		1:4	Dimension unit: mm Maßeinheit: mm	12283218001