

## Technical data

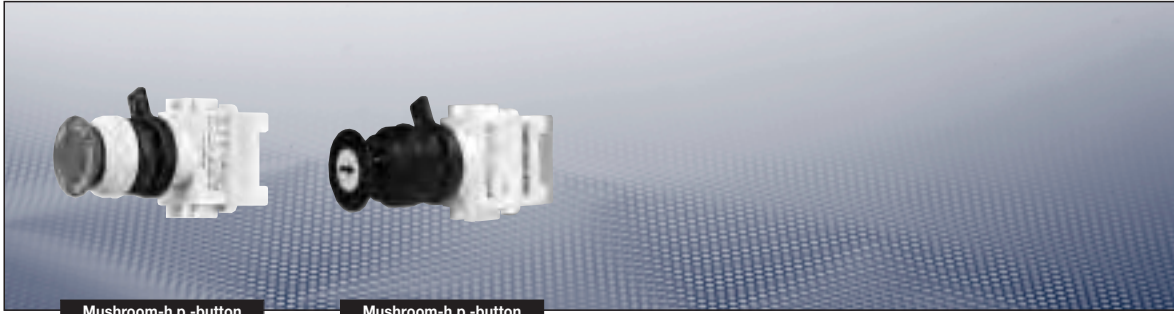
### Ex-Control and signal units for panel mounting

#### Mushroom head pushbutton (Emergency stop and normal version)

Marking to 94/9/EC	Ⓔ II 2 G Ex ed IIC T6 / Ⓔ I M 2 Ex ed I
EC-Type Examination Certificate	PTB 97 ATEX 1081 U PTB 99 ATEX 1034 <sup>1)</sup>
Permissible ambient temperature	-20 °C to +40 °C -55 °C to +55 °C (option)
Rated voltage	500 V AC
Rated current	16 A
Rated current gold contacts	0.4 A
Switch rating	400 V/16 A AC-1 400 V/ 4 A AC-11
Connecting terminals	2 x 2.5 mm <sup>2</sup>
Degree of protection accd. EN 60529	IP66 <sup>1)</sup>
Dimensions (L x W x H)	approx. 59 x 31 x 45 mm
Weight	0.15 kg
Type of mounting	Ø 30.5 mm fixing hole
Enclosure colour	grey
Gasket material	Neoprene (Standard), fluoric silicone or viton on request

<sup>1)</sup> If protective covers are used

## Ex-Control and signal units



Mushroom-h.p.-button

Mushroom-h.p.-button

### Ordering code for Component (Code 2) Code A - B - C - D - E

A	B	C	D	E
GHG 418 815	- R	-	-	-

Code	Component	Code
A	Mushroom head pushbutton	GHG 418 815

Code	Contact system	Contacts		Code	
		hand released	key released	silver contact points	gold contact points
B	2 NO			3	6
	2 NC			4	7
	1 NO + 1 NC			5	8

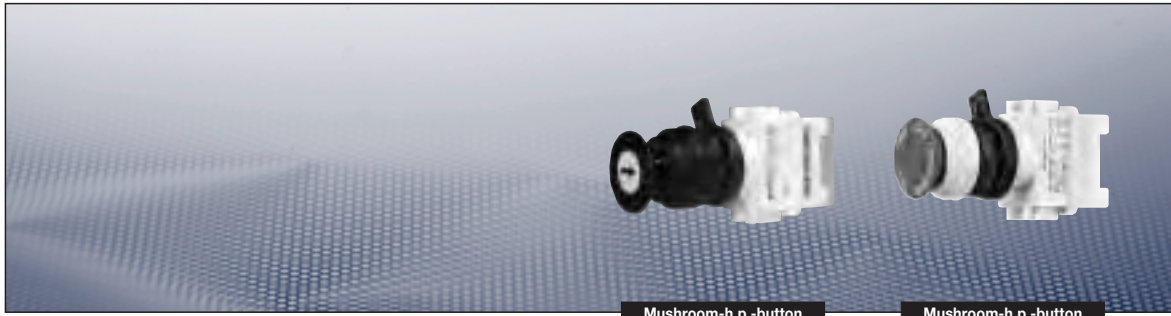
Code	Mushroom head inscription and color	Code
C	NOT-AUS EMERGENCY STOP (German - English) <sup>1)</sup>	1
	NOT-AUS ARRET D'URGENCE (German - French) <sup>1)</sup>	4
	Red	1
	Yellow <sup>1)</sup>	2
	Black <sup>2)</sup>	3

Code	Function	released	engaged	unlocking	Code
D		not lockable	not lockable	n/a (pushbutton function)	1 <sup>2)</sup>
		not lockable	lockable	hand released	2 <sup>1)</sup>
		not lockable	lockable	key released	3 <sup>1)</sup>

Code	Label	Inscription	Code	Inscription	Code
E		0, I, Start, Stop	01	0	02
		I	03	11	04
			05	STOP	06
		START	07	NOT-AUS <sup>1)</sup>	08

<sup>1)</sup> only Emergency stop mushroom head pushbutton

<sup>2)</sup> only Mushroom head pushbutton normal version



Mushroom-h.p.-button

Mushroom-h.p.-button

**Example for ordering code (Code 2)**

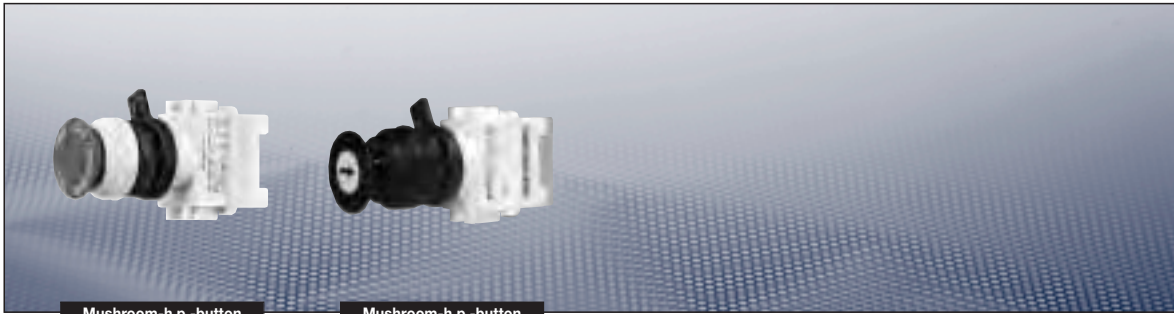
Contact system	Mushroom head colour	Inscription	Order No.				
			A	B	C	D	E
<b>EMERGENCY STOP mushroom-head pushbutton red, with silver contact points, without protective cover</b>							
Version with inscription D/E, hand released							
2 NC	red	German/English	<b>GHG 418 815</b>	<b>3</b>	<b>R 1</b>	<b>2</b>	<b>00</b>
2 NC	red	German/French	<b>GHG 418 815</b>	<b>3</b>	<b>R 4</b>	<b>2</b>	<b>00</b>
2 NO	red	German/English	<b>GHG 418 815</b>	<b>4</b>	<b>R 1</b>	<b>2</b>	<b>00</b>
2 NO	red	German/French	<b>GHG 418 815</b>	<b>4</b>	<b>R 4</b>	<b>2</b>	<b>00</b>
1 NO + 1 NC	red	German/English	<b>GHG 418 815</b>	<b>5</b>	<b>R 1</b>	<b>2</b>	<b>00</b>
1 NO + 1 NC	red	German/French	<b>GHG 418 815</b>	<b>5</b>	<b>R 4</b>	<b>2</b>	<b>00</b>
Version with inscription D/E, key released							
2 NC	red	German/English	<b>GHG 418 815</b>	<b>3</b>	<b>R 1</b>	<b>3</b>	<b>00</b>
2 NC	red	German/French	<b>GHG 418 815</b>	<b>3</b>	<b>R 4</b>	<b>3</b>	<b>00</b>
2 NO	red	German/English	<b>GHG 418 815</b>	<b>4</b>	<b>R 1</b>	<b>3</b>	<b>00</b>
2 NO	red	German/French	<b>GHG 418 815</b>	<b>4</b>	<b>R 4</b>	<b>3</b>	<b>00</b>
1 NO + 1 NC	red	German/English	<b>GHG 418 815</b>	<b>5</b>	<b>R 1</b>	<b>3</b>	<b>00</b>
1 NO + 1 NC	red	German/French	<b>GHG 418 815</b>	<b>5</b>	<b>R 4</b>	<b>3</b>	<b>00</b>
<b>Mushroom-head pushbutton, with silver contact points, without protective cover</b>							
Version with inscription D/E, pushbutton function only							
2 NC	black	0, I, START, STOP	<b>GHG 418 815</b>	<b>3</b>	<b>R 3</b>	<b>1</b>	<b>01</b>
2 NC	yellow	0, I, START, STOP	<b>GHG 418 815</b>	<b>3</b>	<b>R 2</b>	<b>1</b>	<b>01</b>
2 NO	black	0, I, START, STOP	<b>GHG 418 815</b>	<b>4</b>	<b>R 3</b>	<b>1</b>	<b>01</b>
2 NO	yellow	0, I, START, STOP	<b>GHG 418 815</b>	<b>4</b>	<b>R 2</b>	<b>1</b>	<b>01</b>
1 NO + 1 NC	black	0, I, START, STOP	<b>GHG 418 815</b>	<b>5</b>	<b>R 3</b>	<b>1</b>	<b>01</b>
1 NO + 1 NC	yellow	0, I, START, STOP	<b>GHG 418 815</b>	<b>5</b>	<b>R 2</b>	<b>1</b>	<b>01</b>

**Accessories**

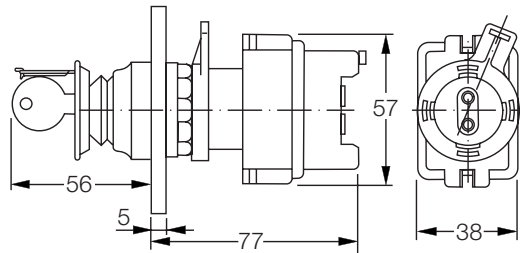
Type	OU	Order No.
Protective cover to meet IP66	5	<b>GHG 410 1939 R0002</b>

Please note that we can only deliver in the ordering units (OU) stated in the tables above

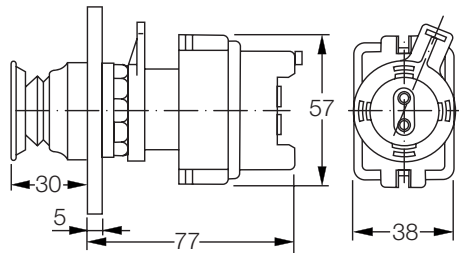
**| Ex-Control and signal units |**



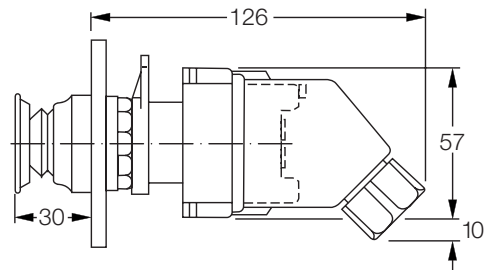
**Dimension drawing**



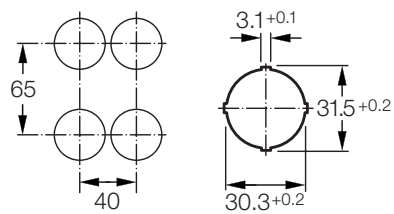
**Mushroom-head pushbutton without protective cover with key release**



**Mushroom-head pushbutton without protective cover**



**Mushroom-head pushbutton with protective cover**



**Minimum distances**

Cooper Crouse-Hinds © 2009 - all rights reserved

Dimensions in mm