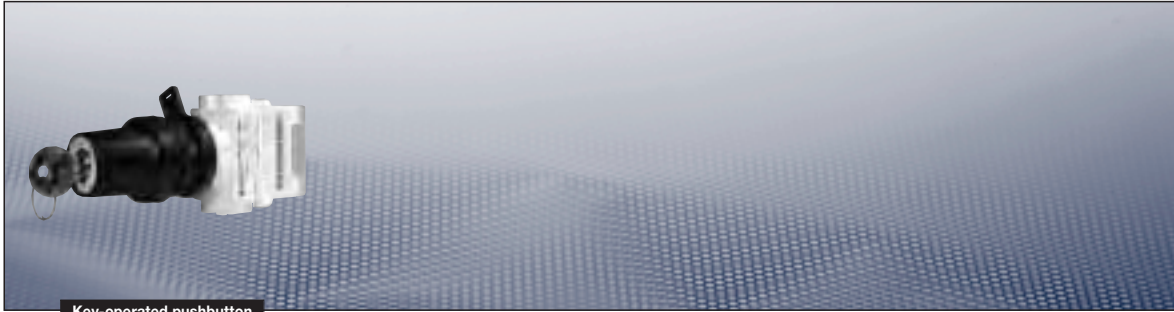


Ex-Control and signal units



Key-operated pushbutton

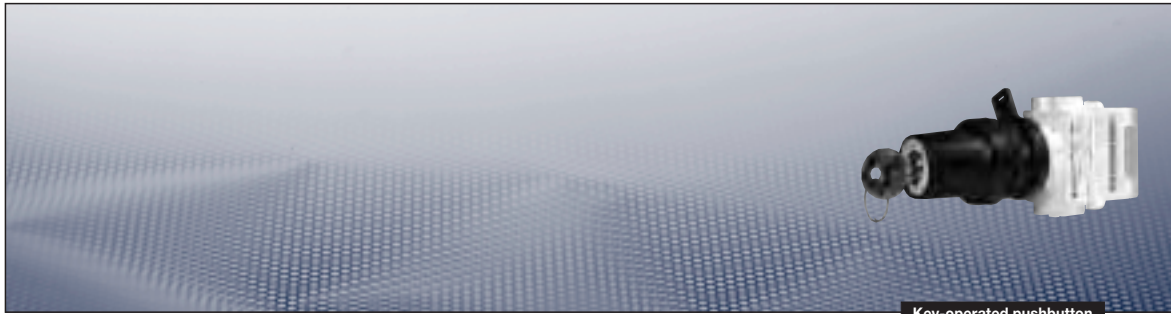
Technical data

Ex-Control and signal units for panel mounting

Key operated switch Type 418 8195

Marking to 94/9/EC	Ⓔ II 2 G Ex ed IIC T6 / Ⓔ I M 2 Ex de I			
EC-Type Examination Certificate	PTB 97 ATEX 1081 U PTB 99 ATEX 1034 ¹⁾			
Permissible ambient temperature	-20 °C to +40 °C -55 °C to +55 °C (option)			
Rated voltage	500 V AC			
Rated current	16 A			
Rated current gold contacts	0.4 A			
Switch rating	AC 15	250 V/6 A	500 V/4 A	
	DC 13	24 V/6 A	60 V/0.8 A	110 V/0.5 A
Connecting terminals	2 x 2.5 mm ²			
Degree of protection accd. EN 60529	IP66 ¹⁾			
Switching system	engaging - engaging - engaging			
Dimensions (L x W x H)	approx. 59 x 31 x 45 mm			
Weight	0.15 kg			
Type of mounting	Ø 30.5 mm fixing hole			
Enclosure colour	grey			
Latch point	CEAG 1 (others on request)			

¹⁾ If protective covers are used



Key-operated pushbutton

Ordering code for Component (Code 2) Code A - C - D

A	C	D
GHG 418 8195	R5	-

Code	Component	Code
A	Key switch	GHG 418 8195

Code	Contact system	Contacts	Code silver contact points	gold contact points
C	2 NC		4	7
	2 NO		5	8

Code	Inscription	Code
D	I 0 II	07
	Fern 0 Ort	08
	Hand 0 Auto	09

other labels on request

Example for ordering code (Code 2)

Switch mechanism	Contact system	Label	Order No.			
			A	C	D	
Key switch with silver contacts, without protective cover						
4		I 0 II	GHG 418 8195	R 5	4	07
4		FERN 0 ORT	GHG 418 8195	R 5	4	08
4		HAND 0 AUTO	GHG 418 8195	R 5	4	09
5		I 0 II	GHG 418 8195	R 5	5	07
5		FERN 0 ORT	GHG 418 8195	R 5	5	08
5		HAND 0 AUTO	GHG 418 8195	R 5	5	09

Switch can be locked in all positions and key can be removed in all positions

Key switch with gold contacts, without protective cover						
7		I 0 II	GHG 418 8195	R 5	7	07
7		FERN 0 ORT	GHG 418 8195	R 5	7	08
7		HAND 0 AUTO	GHG 418 8195	R 5	7	09
8		I 0 II	GHG 418 8195	R 5	8	07
8		FERN 0 ORT	GHG 418 8195	R 5	8	08
8		HAND 0 AUTO	GHG 418 8195	R 5	8	09

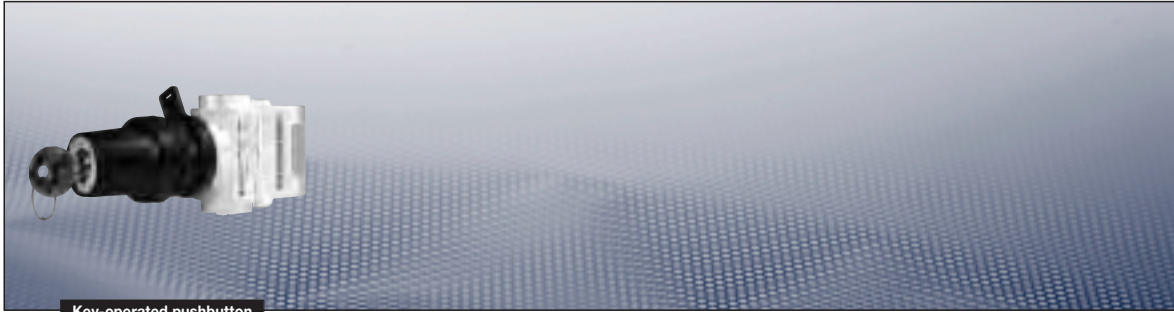
Accessories

Type	OU	Order No.
Protective cover to meet IP66	5	GHG 410 1939 R0002

Please note that we can only deliver in the ordering units (OU) stated in the tables above

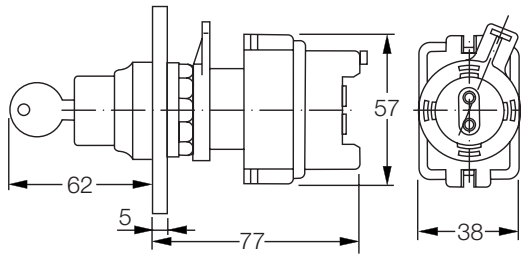
Cooper Crouse-Hinds © 2009 - all rights reserved

1
2
3
4
5
6
7
8
9
10
11
12

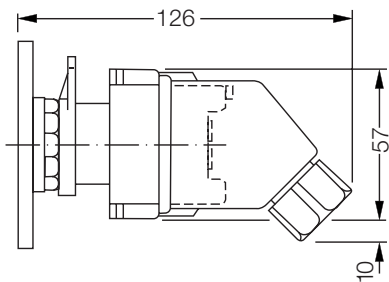


Key-operated pushbutton

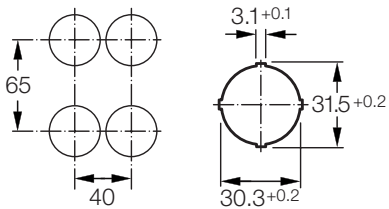
Dimension drawing



Key switch without protective cover



Key switch with protective cover



Minimum distances

Cooper Crouse-Hinds © 2009 - all rights reserved

Dimensions in mm