

Type ADL 4F

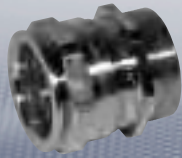
Type ADL 1F

Technical data

Ex-e cable glands metal design ADL 1F | ADL 4F V> 2000 cm³

Marking to 94/9/EC	⊕ Ex II 2 G Ex d IIC / Ex e II / ⊕ Ex II 2 D Ex tD
EC-Type Examination Certificate	LCIE 97 ATEX 6006 X
Permissible ambient temperature	-40 °C to +100 °C
Degree of protection accd. EN 60529	IP66 / IP68 - 10 bar
Thread	ISO thread acc. ISO 965/1, ISO 965/2 and EN 60423
Enclosure material	Natural brass

Ex-cable glands



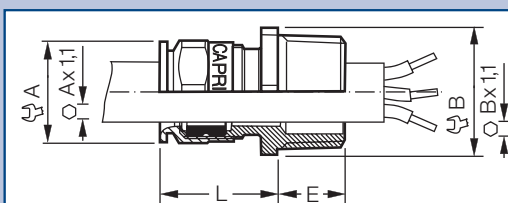
Type ADL 1F

Ordering details

Thread	Type	Cable Ø outside mm	Dimensions			Weight approx. kg	Order No.
			A mm	L ¹⁾ mm	E mm		
Cable gland type ADL 1F for unarmoured cables							
ISO20 x 1.5	ADL 1F ISO20 N05B2	6 - 10	28	59	16	0,094	NOR 000 222 260 852
ISO20 x 1.5	ADL 1F ISO20 N05B1	9 - 14	28	59	16	0,093	NOR 000 222 260 860
ISO25 x 1.5	ADL 1F ISO25 N05B2	6 - 10	28	59	16	0,098	NOR 000 222 260 878
ISO25 x 1.5	ADL 1F ISO25 N05B1	9 - 14	28	59	16	0,096	NOR 000 002 260 886
ISO25 x 1.5	ADL 1F ISO25 N06B4	14 - 18	32	60	18	0,117	NOR 000 222 260 927
ISO25 x 1.5	ADL 1F ISO25 N06B5	16 - 19	32	60	18	0,108	NOR 000 112 260 590
ISO32 x 1.5	ADL 1F ISO32 N07B3	20 - 23	40	73	18	0,217	NOR 000 112 260 623
ISO32 x 1.5	ADL 1F ISO32 N08B1	20 - 27.5	52	83	18	0,357	NOR 000 112 260 657
NPT 1/2"	ADL 1F NPT1/2" N05B2	6 - 10	28	59	16	0,100	NOR 000 222 260 753
NPT 1/2"	ADL 1F NPT1/2" N05B1	9 - 14	28	59	16	0,099	NOR 000 222 260 761
NPT 3/4"	ADL 1F NPT3/4" N05B2	6 - 10	28	59	16	0,107	NOR 000 222 260 779
NPT 3/4"	ADL 1F NPT3/4" N05B1	9 - 14	28	59	16	0,105	NOR 000 222 260 787
NPT 3/4"	ADL 1F NPT3/4" N06B4	14 - 18	32	60	16	0,123	NOR 000 222 260 894
NPT 3/4"	ADL 1F NPT3/4" N06B5	16 - 19	32	60	16	0,115	NOR 000 002 260 890
NPT 1"	ADL 1F NPT1" N07B3	20 - 23	40	73	21	0,235	NOR 000 112 260 607
1" ISO 7/1	ADL 1F 1"ISO7-1 N07B3	20 - 23	40	73	19	0,230	NOR 000 002 260 915
NPT 1"	ADL 1F NPT1" N08B1	20 - 26	52	83	21	0,380	NOR 000 112 260 631
1" ISO 7/1	ADL 1F 1"ISO7-1 N08B1	20 - 26	52	83	19	0,375	NOR 000 002 260 923
The threaded up to 3/4" NPT compatible with ISO 7/1 conic							
PG 13.5	ADL 1F PG13.5 N05B2 B	6 - 10	28	59	16	0,098	NOR 000 222 260 810
PG 13.5	ADL 1F PG13.5 N05B1 A	9 - 14	28	59	16	0,096	NOR 000 222 260 828
PG 16	ADL 1F PG16 N05B2	6 - 10	28	59	16	0,107	NOR 000 222 260 836
PG 16	ADL 1F PG16 N05B1	9 - 14	28	59	16	0,105	NOR 000 222 260 844
PG 21	ADL 1F PG21 N06B4	14 - 18	32	60	21	0,147	NOR 000 222 260 919

¹⁾ Dimensions with max. cable
All dimensions in mm

Dimension drawing



Dimensions in mm