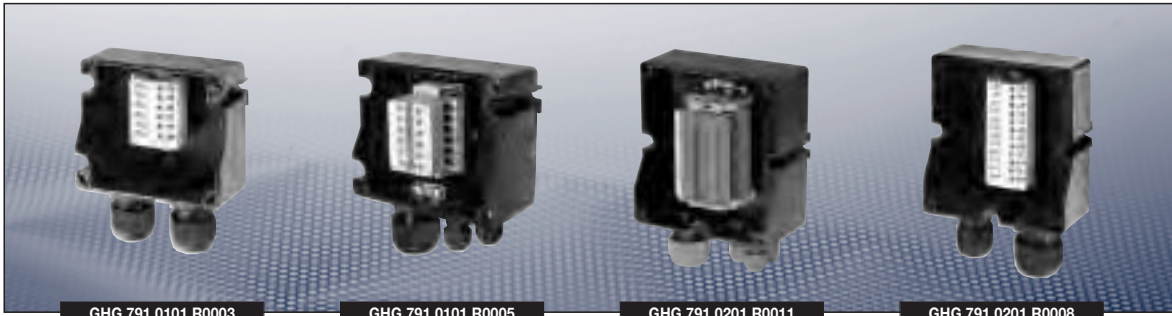


Ex-e/Ex-i terminal box



Technical data

GHG 791 01 up to 4 terminals | GHG 791 02 up to 12 terminals

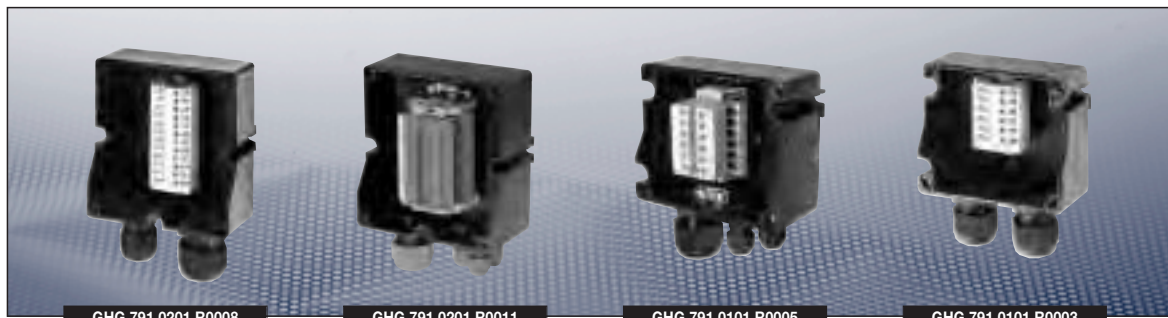
Marking to 94/9/EC	⊕ II 2 G Ex dem ia II, IIC T6 / ⊕ II 2 D Ex tD A21 IP66 T80 °C
EC-Type Examination Certificate	PTB 00 ATEX 3108
IECEX certificate of conformity	IECEX BKI 07.0034
Marking accd. to IECEx	Ex e II T6 / Ex ia IIC T6 Ex tD A21 IP66 T58 °C
Permissible ambient temperature	-20 °C to +40 °C -55 °C to +40 °C (option)
Rated voltage	690 V
Insulation class	I
Degree of protection accd. EN 60529	IP66
Enclosure material	Polyamide
Enclosure colour	black

GHG 791 01 up to 6 terminals

Rated current	max. 30 A
Connecting terminals	up to 4 mm ²
Cable glands/enclosure drilling	max. 2 x M25 or 1 x M25 + 2 x M12
Dimensions (L x W x H)	81.5 x 100 x 61 mm
Weight	approx. 0.3 kg

GHG 791 02 up to 12 terminals

Rated current	max. 39 A
Connecting terminals	up to 6 mm ²
Cable glands/enclosure drilling	max. 2 x M25 or 1 x M32 + 1 x M25 or 1 x M25 + 4 x M12
Dimensions (L x W x H)	117.5 x 113.5 x 73.5 mm
Weight	approx. 0.5 kg

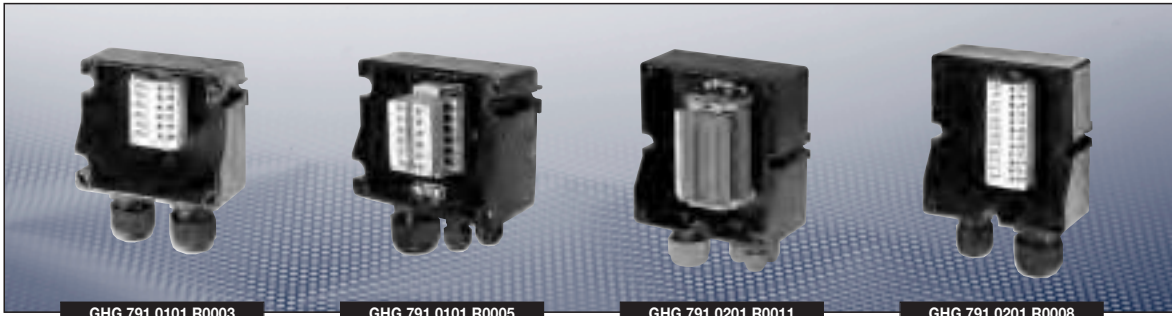


Ordering details

Design	Cable gland	No. of terminals	Order No.
Type 791 01 up to 6 terminals assembled with screw terminals 2 x 2.5 mm² + PE/PA-terminal 2 x 4 mm²			
Ex-e	1 x M25 for cable Ø 8-17 mm 1 x M25 for 2 cable Ø 4.5-7 mm 1 x blanking plug for Ø 4.5-7 mm	6 x Ex-e 4 x PE/PA	GHG 791 0101 R0003
Ex-i	1 x M25 for cable Ø 8-17 mm 1 x M25 for 2 cable Ø 4.5-7 mm 1 x blanking plug for Ø 4.5-7 mm	6 x Ex-i 4 x PE/PA	
Ex-e	1 x M25 for cable Ø 8-17 mm 2 x M12 for cable Ø 4-7 mm 1 x blanking plug for M12	6 x Ex-e 4 x PE/PA	GHG 791 0101 R0005
Ex-i	1 x M25 for cable Ø 8-17 mm 1 x M12 for cable Ø 4-7 mm 1 x blanking plug for M12	6 x Ex-i 4 x PE/PA	
Type 791 01 up to 6 terminals assembled with screwless terminals 2 x 2.5 mm² + PE/PA-terminal 2 x 4 mm²			
Ex-i	1 x M25 for cable Ø 8-17 mm 1 x M25 for 2 cable Ø 4.5-7 mm 1 x blanking plug for Ø 4.5-7 mm	6 x Ex-i 1 x PE/PA	GHG 791 0101 R0008
Ex-e	1 x M25 for cable Ø 8-17 mm 2 x M12 for cable Ø 4-7 mm 1 x blanking plug for M12	6 x Ex-e 1 x PE/PA	
Ex-i	1 x M25 for cable Ø 8-17 mm 1 x M12 for cable Ø 4-7 mm 1 x blanking plug for M12	6 x Ex-i 1 x PE/PA	GHG 791 0101 R0010
Type 791 02 up to 6 terminals assembled with screw terminals 2 x 2.5 mm² + PE/PA-terminal 2 x 4 mm²			
Ex-e	1 x M25 for cable Ø 8-17 mm 1 x M25 for 2 cable Ø 4.5-7 mm 2 x blanking plug for Ø 4.5-7 mm	12 x Ex-e 4 x PE/PA	GHG 791 0201 R0008
Ex-i	1 x M25 for cable Ø 8-17 mm 1 x M25 for 2 cable Ø 4.5-7 mm 2 x blanking plug for Ø 4.5-7 mm	12 x Ex-i 4 x PE/PA	
Ex-e	1 x M25 for cable Ø 8-17 mm 4 x M12 for cable Ø 4-7 mm 2 x blanking plug for M12	12 x Ex-e 4 x PE/PA	GHG 791 0201 R0010
Ex-i	1 x M25 for cable Ø 8-17 mm 4 x M12 for cable Ø 4-7 mm 2 x blanking plug for M12	12 x Ex-i 4 x PE/PA	
Type 791 02 up to 6 terminals assembled with screwless terminals 2 x 2.5 mm² + PE/PA-terminal 2 x 4 mm²			
Ex-i	1 x M25 for cable Ø 8-17 mm 1 x M32 for 4 cable Ø 4.5-7 mm 1 x blanking plug for Ø 4.5-7 mm	12 x Ex-i 4 x PE/PA	GHG 791 0201 R0013
Ex-e	1 x M25 for cable Ø 8-17 mm 4 x M12 for cable Ø 4-7 mm 2 x blanking plug for M12	12 x Ex-e 4 x PE/PA	
Ex-i	1 x M25 for cable Ø 8-17 mm 4 x M12 for cable Ø 4-7 mm 2 x blanking plug for M12	12 x Ex-i 4 x PE/PA	GHG 791 0201 R0015

Other applications available on request.

Ex-e/Ex-i terminal box



Accessories

Mounting plate for junction box 791 01

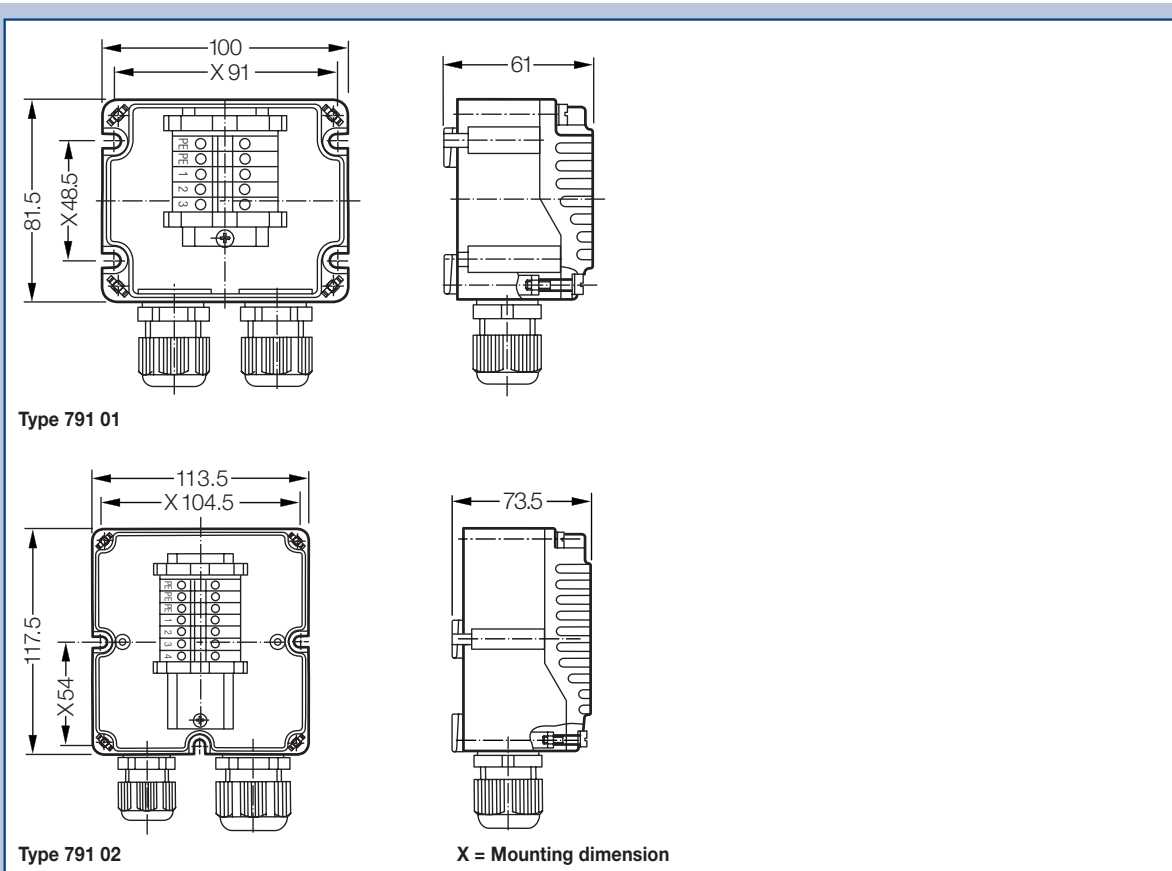
Type	Application	Fixing method	Order No.
Size 1	Wall mounting	screwless mounting	GHG 610 1953 R0101
Size 1	Trellis mounting	screwless mounting	GHG 610 1953 R0103
Size 1	Pipe mounting	screwless mounting	GHG 610 1953 R0102
Protective canopy Size 1	for mounting plate size 1		GHG 610 1955 R0101

Mounting plate for junction box 791 02

Type	Application	Fixing method	Order No.
Size 2	Wall mounting	screwless mounting	GHG 610 1953 R0104
Size 2	Trellis mounting	screwless mounting	GHG 610 1953 R0106
Size 2	Pipe mounting	screwless mounting	GHG 610 1953 R0105
Protective canopy Size 2	for mounting plate size 2		GHG 610 1955 R0102

Details for accessories see page 7.78 pp.

Dimension drawing



Dimensions in mm