

Self-Contained Luminaire STYLE Industry 48011 CGLine

Technical data

48011 CGLine

Viewing distance	32 m
Luminous flux Φ_E/Φ_N at the end of rated operating time	40 %
Enclosure material	coated aluminium / RAL 7035
Type of mounting	Wall or ceiling mounting
Dimensions in mm (L x H x D)	345 x 200 x 80
Weight incl. cover	see ordering details
Battery	rechargeable, maintenance free, gas tight
Duration of emergency lighting 1 h	NC-Akku 3.6 V / 1.5 Ah
Duration of emergency lighting 3 h	NC-Akku 3.6 V / 4.0 Ah
Connection terminals	for 2.5 mm ²
Rated voltage	230 V 50 Hz
Power consumption	16 VA
Lamp	8 W/T16, 450 lm
Insulation class	I
Degree of protection	IP 41 / IP 54
Permissible temperature range	
Maintained mode	-5 °C to +30 °C
Non-maintained mode	0 °C to +35 °C



48011
with clear cover



48011
with cover PL



48011 IP 54
with cover PU

Ordering details

Type	Duration of emergency lighting (h)/Battery	Scope of supply	kg	Order No.
48011-1/D CGLine IP 41	1h / 3.6 V/1.5 Ah	Luminaire enclosure IP 41 without cover	2.6	4 0071 350 114
48011-3/D CGLine IP 41	3h / 3.6 V/4.0 Ah	Luminaire enclosure IP 41 without cover	2.8	4 0071 350 115
48011-1/D CGLine IP 54	1h / 3.6 V/1.5 Ah	Luminaire enclosure IP 41 without cover	3.0	4 0071 350 116
48011-3/D CGLine IP 54	3h / 3.6 V/4.0 Ah	Luminaire enclosure IP 41 without cover	3.2	4 0071 350 117
Cover PL		Cover with silk screened legend acc. DIN 4844		4 0071 349 320
Cover PR		Cover with silk screened legend acc. DIN 4844		4 0071 349 321
Cover PU		Cover with silk screened legend acc. DIN 4844		4 0071 349 323
Cover PL		Cover with silk screened legend		4 0071 348 011
Cover PR		Cover with silk screened legend		4 0071 348 012
Cover PU		Cover with silk screened legend		4 0071 348 013
Cover SL		Clear cover		4 0071 345 985

Accessories

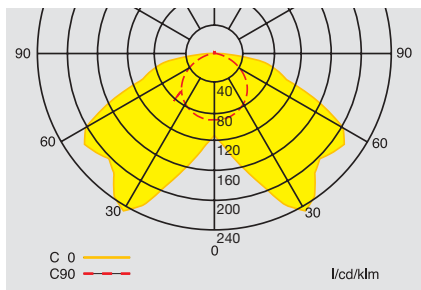
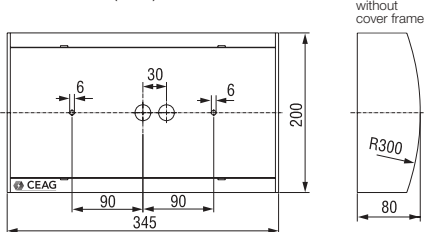
Type	Order No.
Wire guard AP	4 0071 348 370
2 x M20 screwing	4 0071 348 422

Lighting engineering

Project engineering for 48011 for E = 1.0 lx (0.5 lx) with clear cover

Mounting height (m)	Types of mounting	Mounting distances (m)			
		L1	L2	L3	L4
2.5	Ceiling mounting	2.3 (3.1)	6.2 (7.6)	3.9 (4.8)	9.4 (11.2)
3.0	Escape route centre	2.3 (3.2)	6.4 (8.2)	4.0 (5.2)	10.4 (12.4)
4.0		1.8 (3.2)	6.4 (9.0)	3.7 (5.6)	11.2 (14.2)
5.0		0.5 (2.9)	5.8 (9.2)	- (5.4)	10.8 (15.4)
2.0	Wall mounting	2.2 (2.7)	5.4 (6.4)	2.4 (3.1)	6.2 (8.2)
2.5		2.1 (2.8)	5.4 (6.8)	- (2.9)	5.8 (8.2)
3.0		1.8 (2.6)	5.2 (7.0)	- (-)	5.0 (7.8)

Dimensions (mm)



Polar curve 48011
with clear cover