

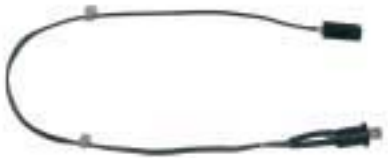
# Single Power Supply

## VL 8-1 CGLine/VL 8-2 CGLine

### for Standard and 4-Pin Compact Fluorescent Lamps

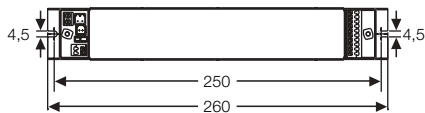
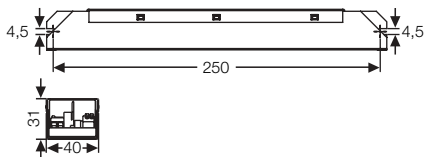


VL 8-1 CGLine

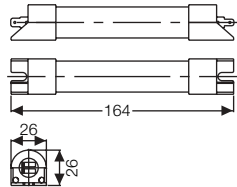


Test button incl.  
multicolour indication LED

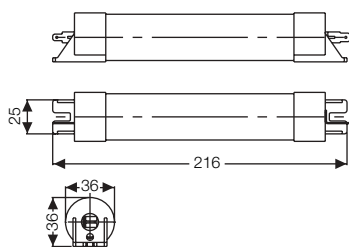
Dimensions in mm



VL 8-1 CGLine/VL 8-2 CGLine



NiCd-Accu 3.6 V/1.5 Ah



NiCd-Accu 3.6 V/4 Ah

## Technical data

### VL 8-1 CGLine/VL 8-2 CGLine

|                               |   |                          |
|-------------------------------|---|--------------------------|
| Enclosure material            | Galvanized sheet steel                    |                          |
| Typ of mounting               | For installation inside luminaires        |                          |
| Dimensions in mm (L x H x D)  | 260 x 40 x 31                             |                          |
| Weight                        | VL 8-1 CGLine                             | 0.5 kg                   |
|                               | VL 8-2 CGLine                             | 0.5 kg                   |
|                               | 2 x Accu 3.6 V/1.5 Ah                     | 0.32 kg                  |
|                               | 2 x Accu 3.6 V/4 Ah                       | 0.86 kg                  |
| Battery                       | rechargeable, maintenance free, gas tight |                          |
| Emergency duration 1h         | NiCd-Accu 2 x 3.6 V/1.5 Ah                |                          |
| Emergency duration 3h         | NiCd-Accu 2 x 3.6 V/4 Ah                  |                          |
| Supply terminals              | Mains                                     | 2 x 1.5 mm <sup>2</sup>  |
|                               | Data line                                 | 2 x 1.5 mm <sup>2</sup>  |
|                               | Luminaire/EVG-connection                  | 10 x 1.5 mm <sup>2</sup> |
| Rated voltage                 | 230 V 50/60 Hz                            |                          |
| Power consumption             | 6 VA                                      |                          |
| Functional earth              | necessary                                 |                          |
| Degree of protection          | IP 20                                     |                          |
| Permissible temperature range | VL 8-1 CGLine                             | -10° C to 50 °C          |
|                               | VL 8-2 CGLine                             | -10° C to 50 °C          |
|                               | Battery                                   | 0° C to 40 °C            |
|                               |   |                          |

## Luminous flux depending on lamp

### VL 8-1 CGLine

| Type   |      | Luminous flux in emergency mode at 20 °C |
|--------|------|--|
| T26    | 36 W | 14 %                                     |
| T26    | 58 W | 8 %                                      |
| TC-TEL | 32 W | 17 %                                     |
| TC-TEL | 42 W | 12 %                                     |
| TC-L   | 36 W | 14 %                                     |
| TC-L   | 40 W | 12 %                                     |
| TC-L   | 55 W | 10 %                                     |
| TC-F   | 36 W | 14 %                                     |

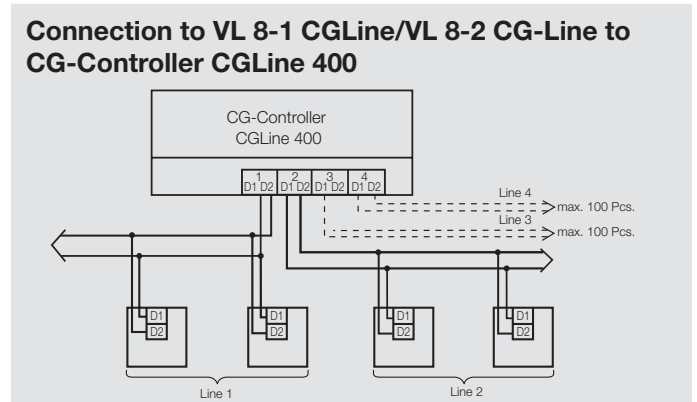
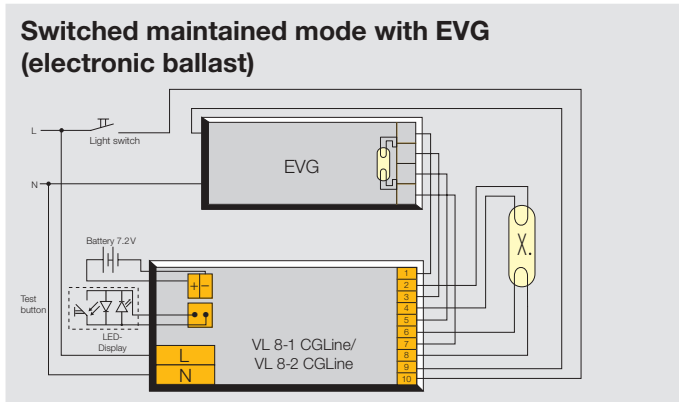
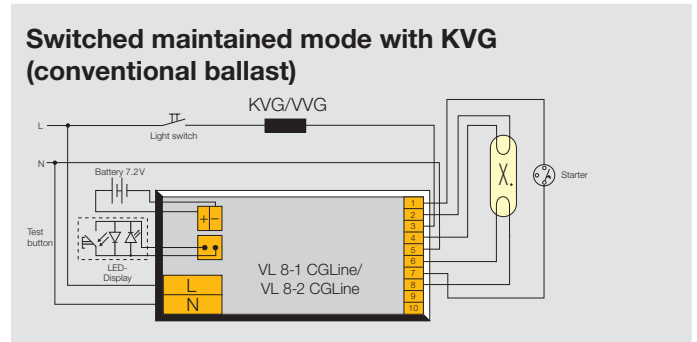
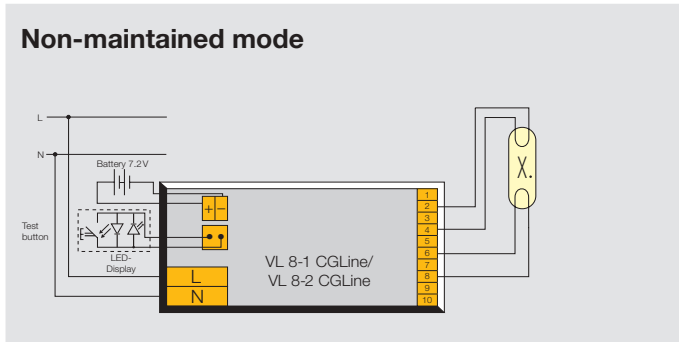
### VL 8-2 CGLine

| Type   |      | Luminous flux in emergency mode at 20 °C |
|--------|------|--|
| TC-SEL | 11 W | 40 %                                     |
| TC-DEL | 10 W | 42 %                                     |
| TC-DEL | 13 W | 42 %                                     |
| TC-DEL | 18 W | 30 %                                     |
| TC-DEL | 26 W | 30 %                                     |
| TC-TEL | 13 W | 44 %                                     |
| TC-TEL | 18 W | 33 %                                     |
| TC-TEL | 26 W | 30 %                                     |
| TC-F   | 18 W | 23 %                                     |
| TC-F   | 24 W | 22 %                                     |
| TC-L   | 18 W | 23 %                                     |
| TC-L   | 24 W | 22 %                                     |

## Ordering details

| Type                   | Delivery content   | Order No.      |
|------------------------|--|----------------|
| VL 8-1 CGLine          | Power supply incl. test button and multicolour indication LED, without battery | 4 0071 347 680 |
| VL 8-2 CGLine          | Power supply incl. test button and multicolour indication LED, without battery | 4 0071 347 681 |
| NiCd-Accu 3.6 V/1.5 Ah | Battery incl. end caps for fixing (for 7.2 V two batteries are necessary)      | 4 0071 344 712 |
| NiCd-Accu 3.6 V/4 Ah   | Battery incl. end caps for fixing (for 7.2 V two batteries are necessary)      | 4 0071 344 713 |

# Single Power Supply VL 8-1 CGLine/VL 8-2 CGLine Modes



## VL 8 CGLine multicolour LED indicator

| Status                     | LED   | LED                               |
|----------------------------|-------|-----------------------------------|
| No fault                   | ●     | green lights up                   |
| Emergency mode             | ○     | LED does not light up             |
| Delay-time on mains return | * / * | blinks green / yellow alternately |
| Luminaire in function test | *     | green blinks                      |
| Luminaire in duration test | *     | green flashes                     |
| Charging fault             | *     | red flashes                       |
| Fault in function test     | * / * | blinks green / red alternately    |
| Fault in duration test     | * / * | blinks green / red alternately    |
| Lamp fault                 | * / * | blinks yellow / red alternately   |
| Block mode <sup>(1)</sup>  | *     | yellow blinks                     |

● = LED does not light up; ○ = LED light up; \* = LED blinks; \* = LED flashes

<sup>(1)</sup> Only in mains operation

## VL 8 CGLine test button incl. multicolour indication LED

| Test button pressed for | Function                             | LED    | LED                       |
|-------------------------|--------------------------------------|--------|---------------------------|
| 1 sec. < t < 5 sec.     | Function test ON                     | *      | green blinks              |
| t > 5 sec.              | Duration test ON / OFF               | *      | green flashes             |
|                         | Duration test delayed <sup>(1)</sup> | ● (1s) | red for 1s <sup>(2)</sup> |
| t > 10 sec.             | RESET of luminaire                   | ○      | LED does not light up     |

● = LED does not light up; ○ = LED light up; \* = LED blinks; \* = LED flashes

<sup>(1)</sup> Duration test delayed = FT happens in max. 24 h, because charging of battery has not be ended

<sup>(2)</sup> After pressing test button

Example: Address 25 = First LED YELLOW blinks 2 times, then LED RED blinks 5 times