

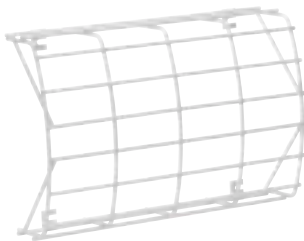
Emergency Luminaire STYLE Industry 40031 CG-S, 40031



40031 IP 41

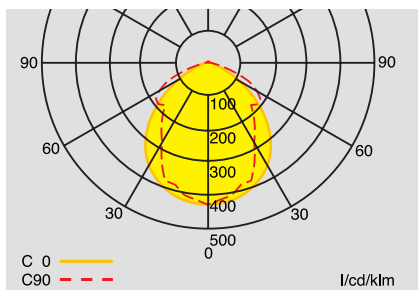
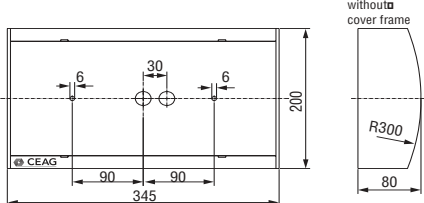


40031 CG-S IP 54
with clear cover



Wire guard

Dimensions (mm)



**Polar curve 40031 CG-S
with clear cover**

Technical data

40031 CG-S, 40031

Luminous flux Φ_E/Φ_N at the end of rated operating time	75 %
Enclosure material	Aluminium finish
Weight incl. cover	1.8 kg
Enclosure colour	grey RAL 7035
Type of mounting	Wall and ceiling mounting
Dimensions (mm) (L x H x D)	345 x 200 x 80
Connection terminals	Loop terminals 3 x 2.5 mm ²
Voltage range	230 V 50/60 Hz, 220 V DC +25/-20%
Current consumption (220 V battery)	47 mA
Power consumption	22.5 VA
Permissible temperature range	-10°C to + 40°C
Lamp	11 W / TC-SEL 900 lm
Insulation class	I
Degree of protection	IP 41 (IP 54 Option)

Ordering details

Type	Scope of supply	Order No.
40031 CG-S IP 41	Luminaire enclosure with clear cover and CG-monitoring with 20 digit address switch, without lamp	4 0071 348 403
40031 IP 41	Luminaire enclosure with clear cover, without lamp	4 0071 348 402
40031 CG-S IP 54	Luminaire enclosure with clear cover and CG-monitoring with 20 digit address switch and IP 54 cover frame, without lamp	4 0071 348 405
40031 IP 54	Luminaire enclosure with clear cover and IP 54 cover frame, without lamp	4 0071 348 404

Accessories

Type	Order No.
Wire guard	4 0071 348 370
Ceiling mounting angle	4 0071 348 588
2 x M20 cable glands	4 0071 348 422

Lighting engineering (with 11 W/TC-SEL, 900 lm lamp)

Measuring level: 0.02 m, incl. 25 % ageing factor

Engineering help 40031 CG-S with clear cover for $E = 1.25 \text{ lx}$ (0.625 lx)

Mounting height (m)	Types of mounting	Mounting distances (m)			
		L1	L2	L3	L4
8	Ceiling mounting/ Escape route centre	6.5 (8.6)	17.2 (21.4)	5.6 (7.7)	15.4 (23.0)
9		6.4 (8.9)	17.8 (22.4)	5.5 (7.9)	15.6 (23.2)
10		6.2 (9.1)	18.2 (23.4)	5.3 (7.9)	15.8 (23.0)
11		5.7 (9.2)	18.4 (24.2)	5.1 (7.9)	15.6 (21.6)
12		5.1 (9.2)	18.2 (24.8)	4.8 (7.8)	15.2 (22.0)
13		4.1 (9.0)	18.0 (25.4)	4.1 (7.6)	14.8 (22.2)
14		2.8 (8.7)	17.4 (25.6)	2.9 (7.5)	14.6 (22.2)
15		0.7 (8.4)	16.4 (25.8)	0.8 (7.3)	14.0 (22.2)
8	Ceiling mounting/ Area illumination	4.4 (6.4)	13.4 (18.2)	5.5 (6.5)	16.2 (21.0)
9		4.4 (6.4)	15.4 (18.4)	5.5 (6.5)	14.8 (22.0)
10		4.4 (6.4)	16.2 (18.0)	5.5 (6.5)	15.0 (23.4)
11		4.4 (7.4)	16.6 (18.0)	4.5 (6.5)	15.4 (24.0)
12		3.4 (6.4)	17.0 (20.4)	4.5 (6.5)	15.6 (21.8)
13		2.4 (6.4)	18.0 (21.6)	3.5 (6.5)	15.2 (21.4)
14		0.7 (6.4)	18.6 (22.4)	0.7 (6.5)	15.0 (21.6)
15		0.7 (5.4)	18.8 (24.0)	0.7 (6.5)	15.0 (21.0)