

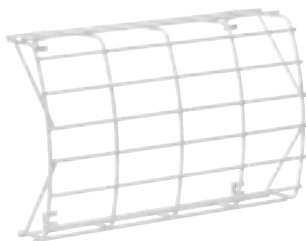
# Emergency Luminaire STYLE Industry 40011 CG-S, 40011



40011 CG-S  
with clear cover



40011 CG-S  
with legend PL



Wire guard

## Technical data

### 40011 CG-S, 40011

<b>Viewing distance</b>	<b>32 m</b>
Luminous flux $\Phi_E/\Phi_N$ at the end of rated operating time	75 %
Enclosure material	Aluminium finish
Weight incl. cover	2.3 kg
Enclosure colour	grey RAL 7035
Type of mounting	Wall and ceiling mounting
Dimensions (mm) (L x H x D)	345 x 200 x 80
Connection terminals	Loop terminals 3 x 2.5 mm <sup>2</sup>
Voltage range	230 V 50/60 Hz, 220 V DC +25/-20%
Current consumption (220 V battery)	30 mA
Power consumption	16 VA
Permissible temperature range	-10°C to + 40°C
Lamp	8 W/T16, 450 lm
Insulation class	II
Degree of protection	IP 41 (IP 54 Option) (IP 54 kit for electronics and lamp, optional)

## Ordering details

Type	Scope of supply	Order No.
<b>40011 CG-S</b>	<b>Luminaire without cover with CG-monitoring and 20 digit address switch</b>	<b>4 0071 348 401</b>
<b>40011 Cover SL</b>	<b>Luminaire without cover Clear cover</b>	<b>4 0071 348 400</b> <b>4 0071 345 985</b>
<b>Cover PL acc. DIN 4844</b>	<b>Cover with silk screened legend</b>	<b>4 0071 349 320</b>
<b>Cover PR acc. DIN 4844</b>	<b>Cover with silk screened legend</b>	<b>4 0071 349 321</b>
<b>Cover PU acc. DIN 4844</b>	<b>Cover with silk screened legend</b>	<b>4 0071 349 323</b>
<b>Cover PL</b>	<b>Cover with silk screened legend</b>	<b>4 0071 348 011</b>
<b>Cover PR</b>	<b>Cover with silk screened legend</b>	<b>4 0071 348 012</b>
<b>Cover PU</b>	<b>Cover with silk screened legend</b>	<b>4 0071 348 013</b>

## Accessories

Type	Scope of supply	Order No.
<b>IP 54 Set</b>	<b>Predective cover IP 54 with mounting material</b>	<b>4 0071 345 975</b>
<b>Wire guard</b>		<b>4 0071 348 370</b>
<b>Ceiling mounting angle</b>		<b>4 0071 348 588</b>
<b>2 x M20 cable glands</b>		<b>4 0071 348 422</b>

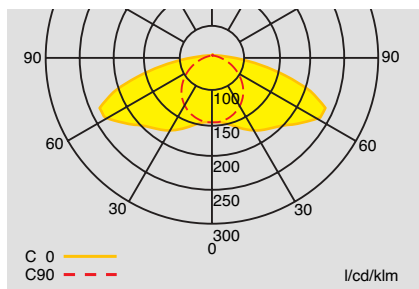
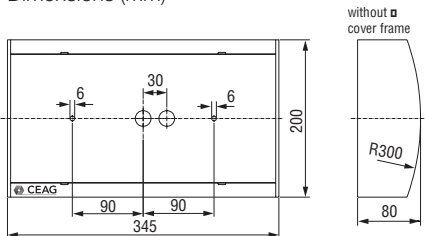
## Lighting engineering (with 8 W/T16, 450 lm lamp)

Measuring level: 0.02 m, incl. 25 % ageing factor

Engineering help 40011 CG-S with clear cover for E = 1.25 lx (0.625 lx)

Mounting height (m)	Types of mounting	Mounting distances (m)			
		L1	L2	L3	L4
2.5	Ceiling mounting	2.9 (3.7)	7.4 ( 9.0)	5.1 (6.3)	12.4 (15.0)
3.0	Escape route centre	3.0 (3.9)	7.8 ( 9.8)	5.3 (6.8)	13.4 (16.4)
4.0		3.1 (4.3)	8.4 (11.0)	5.2 (7.4)	14.8 (18.8)
5.0		2.7 (4.3)	8.6 (11.6)	4.5 (7.4)	17.8 (20.4)
6.0		2.0 (4.2)	8.4 (12.0)	3.7 (7.1)	14.0 (21.0)
7.0		0.3 (3.9)	7.6 (12.2)	0.8 (6.4)	12.9 (20.8)
2.0	Wall mounting	2.8 (3.3)	6.6 ( 7.8)	3.4 (4.1)	8.2 ( 9.8)
2.5		2.9 (3.5)	7.0 ( 8.2)	3.2 (4.1)	8.2 (10.0)
3.0		2.9 (3.5)	7.0 ( 8.4)	– (3.9)	7.8 (10.0)
3.0	Ceiling mounting	2.4 (3.4)	7.8 ( 9.6)	5.5 (6.5)	13.6 (16.2)
4.0	Area illumination	2.4 (3.4)	8.6 (10.8)	5.5 (7.5)	15.2 (19.0)
5.0		2.4 (4.4)	8.8 (11.8)	4.5 (5.5)	16.2 (20.8)
6.0		1.8 (3.4)	8.8 (12.2)	3.0 (6.5)	16.0 (22.4)
7.0		0.7 (3.4)	8.8 (12.6)	0.7 (5.5)	15.2 (23.0)

Dimensions (mm)



Polar curve 40011 CG-S  
with clear cover