

# GuideLed FSL CG-S

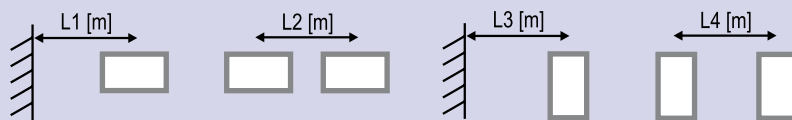


- Safety luminaire in LED technology for surface mounting or semi-recessed mounting
- Low height of only 36 mm or 14 mm
- Anti-glare illumination ensured by precise micro-prism optics.
- Increased safety by use of three-chip LEDs.
- Reduced battery costs on account of especially low power consumption.
- Low operating costs on account of low effective power of 4 W only.
- To be used up to a light spot height of up to 5.5 m.
- Minimum service requirement due to high service life of the LEDs (50 000 hours).
- Installation of safety luminaire without the use of tools at the mounting set.

Luminous flux $\Phi_e / \Phi_{\text{nominal}}$ at the end of the rated service time	100%
Housing material	PC, PMMA
Housing colour	Light grey RAL 7035
Weight	0.49 kg (10011 FSL CG-S) 0.45 kg (10012 FSL CG-S)
Type of mounting	Ceiling installation / semi-recessed installation
Connection terminal	Clamp terminal 2.5 mm <sup>2</sup>
Voltage ranges	220-240 VAC, 50 Hz 176-275 VDC
Current consumption - battery operation	18 mA
Connected load - mains operation (apparent power / effective power)	7.2 VA / 4.0 W
Permissible ambient temperature	-20° Celsius to +40° Celsius
Lamp	LED batten with three-chip LEDs

## Order data

Scope of delivery	Order No.
Mounting set for GuideLed FSL 10011 CG-S, surface installation, including LED supply and CG-S technology (20 addresses)	40071353641
Mounting set for GuideLed FSL 10012 CG-S, recessed installation of the LED supply and CG-S technology (20 addresses) *	40071353642
LED safety luminaire GuideLed FSL 10011 / 10012 CG-S with special micro-prism optics (without mounting set)	40071353590



## Planning assistance for GuideLed FSL, escape route illumination

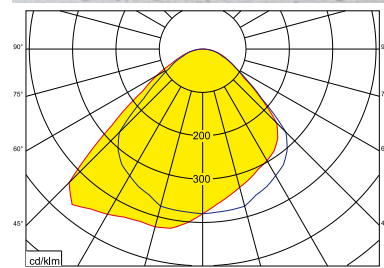
Mounting height [m]	1.0 lx	0.5 lx	1.0 lx	0.5 lx	1.0 lx	0.5 lx	1.0 lx	0.5 lx
2.50	2.70	3.20	6.40	7.60	2.80	3.40	6.60	8.00
3.00	2.90	3.50	6.90	8.30	3.10	3.70	7.40	8.70
3.50	3.00	3.80	7.60	9.00	3.30	4.00	8.00	9.40
4.00	2.90	4.10	8.10	9.60	3.20	4.30	8.60	10.10
4.50	2.60	4.20	8.30	10.20	2.90	4.60	9.10	10.80
5.00	2.30	4.20	8.30	10.80	2.40	4.70	9.30	11.40

## Open illumination

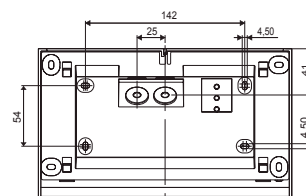
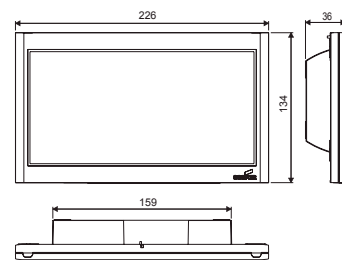
2.50	2.30	3.30	5.40	6.40	2.40	3.40	5.40	6.60
3.00	2.30	3.30	6.00	7.00	3.40	3.40	5.80	7.20
3.50	2.30	3.30	6.40	7.80	3.40	3.40	6.40	7.60
4.00	2.30	3.40	6.80	8.20	3.40	3.30	6.80	8.20
4.50	2.30	3.30	7.20	8.80	2.40	4.40	7.20	8.60
5.00	1.30	3.30	7.80	9.20	3.40	4.40	7.60	9.20

Measuring height 0.02 m, maintenance factor MF = 80 per cent, battery operation, spacings in m

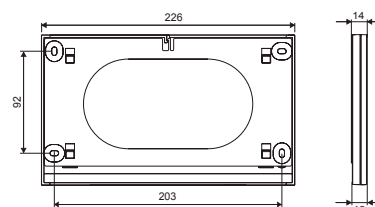
\* Installation of the LED supply in a not included device, for example a double switchbox in keeping with German standard DIN 49073



GuideLed FSL CG-S



FSL 10011 CG-S



FSL 10012 CG-S