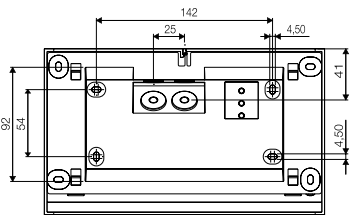
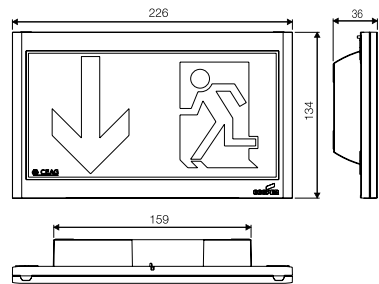
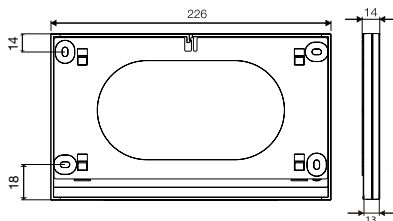


GuideLed CG-S wall mounting



10011 CG-S



10012 CG-S

Please observe a distance of 10mm above for mounting!

- Exit sign luminaire in LED technology for wall mounting.
- Slender design with mounting heights of 14 mm or 36 mm only.
- Very good perceptibility on account of high luminance of the white contrasting colour > 500 cd/m² in keeping with standard ISO 3864-1 and high uniformity Lmin/Lmax > 0,8
- Increased safety by use of three-chip LEDs.
- Reduced battery costs on account of especially low power consumption.
- Low operating costs on account of low effective power of 1.9 W only.
- Minimum service requirement due to high service life of the LEDs (50 000 hours).
- Installation of the LED pictogram without tools on the mounting set.

Viewing distance:	20 m
Luminous flux Φ_e/Φ nominal at the end of the rated service time	100 %
Housing material	PC, PMMA
Housing colour	Light grey RAL 7035
Weight	0.47 kg (10011 LED CG-S) 0.41 kg (10012 LED CG-S)
Type of mounting	Wall mounting
Connection terminal	Clamp terminal 2.5 mm ² reverse polarity protected
Connection voltage	220-240 VAC, 50 Hz 176-275 VDC
Current consumption - battery operation	8 mA
Connected load - mains operation (apparent power / effective power)	4.0 VA / 1.9 W
Permissible ambient temperature	-20° Celsius to +40° Celsius
Lamp	LED batten with three-chip LEDs

Order data - fastening set

Scope of delivery	Order No.
Wall mounting set for GuideLed 10011 CG-S und 11011 CG-S, surface-mounted installation including LED supply and CG-S technology (20 addresses)	40071353641
Wall mounting set for GuideLed 10012 CG-S and 11012 CG-S, flush-mounted installation** of the LED supply provided and CG-S technology (20 addresses)	40071353642

Order data - LED pictograms*

Scope of delivery	Order No.
LED pictogram PL for GuideLed 10011/10012 CG-S, DIN 4844, 20 m	40071353000
LED pictogram PR for GuideLed 10011/10012 CG-S, DIN 4844, 20 m	40071353001
LED pictogram PU for GuideLed 10011/10012 CG-S, DIN 4844, 20 m	40071353002
LED pictogram PL for GuideLed 10011/10012 CG-S, 20 m	40071353050
LED pictogram PR for GuideLed 10011/10012 CG-S, 20 m	40071353051
LED pictogram PU for GuideLed 10011/10012 CG-S, 20 m	40071353052

Order data - accessories

Scope of delivery	Order No.
Feed-through wiring set for GuideLed 10011/11011 CG-S	40071353643

* Fastening set required

** Installation of the LED supply in a not included device, for example a double switchbox in keeping with German standard DIN 49073

GuideLed CG-S wall top installation

- Exit sign luminaire in LED technology for wall mounting.
- Slender design with mounting heights of 14 mm or 36 mm only.
- Very good perceptibility on account of high luminance of the white contrasting colour > 500 cd/m² in keeping with standard ISO 3864-1 and high uniformity Lmin/Lmax > 0,8
- Increased safety by use of three-chip LEDs.
- Reduced battery costs on account of especially low power consumption.
- Low operating costs on account of low effective power of 2.6 W only.
- Minimum service requirement due to high service life of the LEDs (50 000 hours).
- Installation of the LED pictogram without tools on the mounting set.



Viewing distance:	30 m
Luminous flux Φ_e / Φ nominal at the end of the rated service time	100 %
Housing material	PC, PMMA
Housing colour	Light grey RAL 7035
Weight	0.60 kg (11011 LED CG-S) 0.56 kg (11012 LED CG-S)
Type of mounting	Wall top installation
Connection terminal	Clamp terminal 2.5 mm ² reverse polarity protected
Connection voltage	220-240 VAC, 50 Hz 176-275 VDC
Current consumption - battery operation	11 mA
Connected load - mains operation (apparent power / effective power)	5.0 VA / 2.6 W
Permissible ambient temperature	-20° Celsius to +40° Celsius
Lamp	LED batten with three-chip LEDs



Order data - fastening set

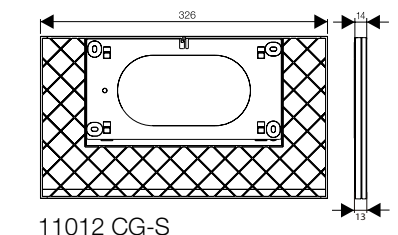
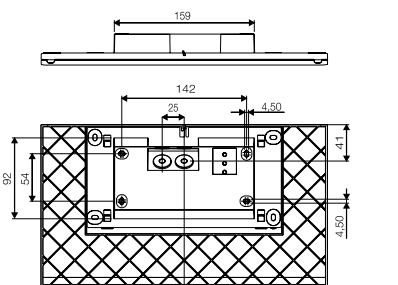
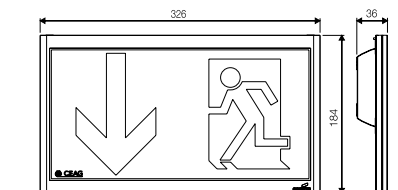
Scope of delivery	Order No.
Wall mounting set for GuideLed 10011 CG-S und 11011 CG-S, surface-mounted installation including LED supply and CG-S technology (20 addresses)	40071353641
Wall mounting set for GuideLed 10012 CG-S and 11012 CG-S, flush-mounted installation** of the LED supply and CG-S technology (20 addresses)	40071353642

Order data - LED pictograms*

Scope of delivery	Order No.
LED pictogram PL for GuideLed 11011/11012 CG-S, DIN 4844, 30 m	40071353100
LED pictogram PR for GuideLed 11011/11012 CG-S, DIN 4844, 30 m	40071353101
LED pictogram PU for GuideLed 11011/11012 CG-S, DIN 4844, 30 m	40071353102
LED pictogram PL for GuideLed 11011/11012 CG-S, 30 m	40071353150
LED pictogram PR for GuideLed 11011/11012 CG-S, 30 m	40071353151
LED pictogram PU for GuideLed 11011/11012 CG-S, 30 m	40071353152

Order data - accessories

Scope of delivery	Order No.
Feed-through wiring set for GuideLed 10011/11011 CG-S	40071353643



Please observe a distance of 10mm above for mounting!

* Fastening set required

** Installation of the LED supply in a not included device, for example a double switchbox in keeping with German standard DIN 49073